

# Revised Land Use Plan Proposed

## School Candidates Exchange Views

More than 50 parents braved bone chilling cold weather to attend the annual Board of Education candidates' night, sponsored by School 5 PTA.

The event was certainly friendly enough with six of the seven remaining trustee hopefuls in this election delivering a brief outline of their

qualifications, skirting issues and stating rather innocuous reasons for wanting to secure one of the three available full term seats on the school board next February.

The candidates in the election are Joseph Casale, 213 Fairway Avenue; Joseph D'Ambola, Joralemon Street;

Carmen Castellano, 8 Beverly Court, (who did not appear for the meeting); Rocco Saletta, an incumbent and current board president; Michael Albertine, 631 Joralemon Street; Dr. Frank Di Ruggiero, an incumbent who is seeking a fifth term; and Mrs. Norma McCool, a six year board veteran, who is vying for another term.

Dr. Di Ruggiero attended the candidates session even though he was suffering with the gripe. He told the small Belleville audience he was proud to run for the school board once again, he was happy about past support from residents and hoped they would continue to back him in this current election bid. Pallid and drawn, Di Ruggiero left shortly later.

### School 5 Graduate

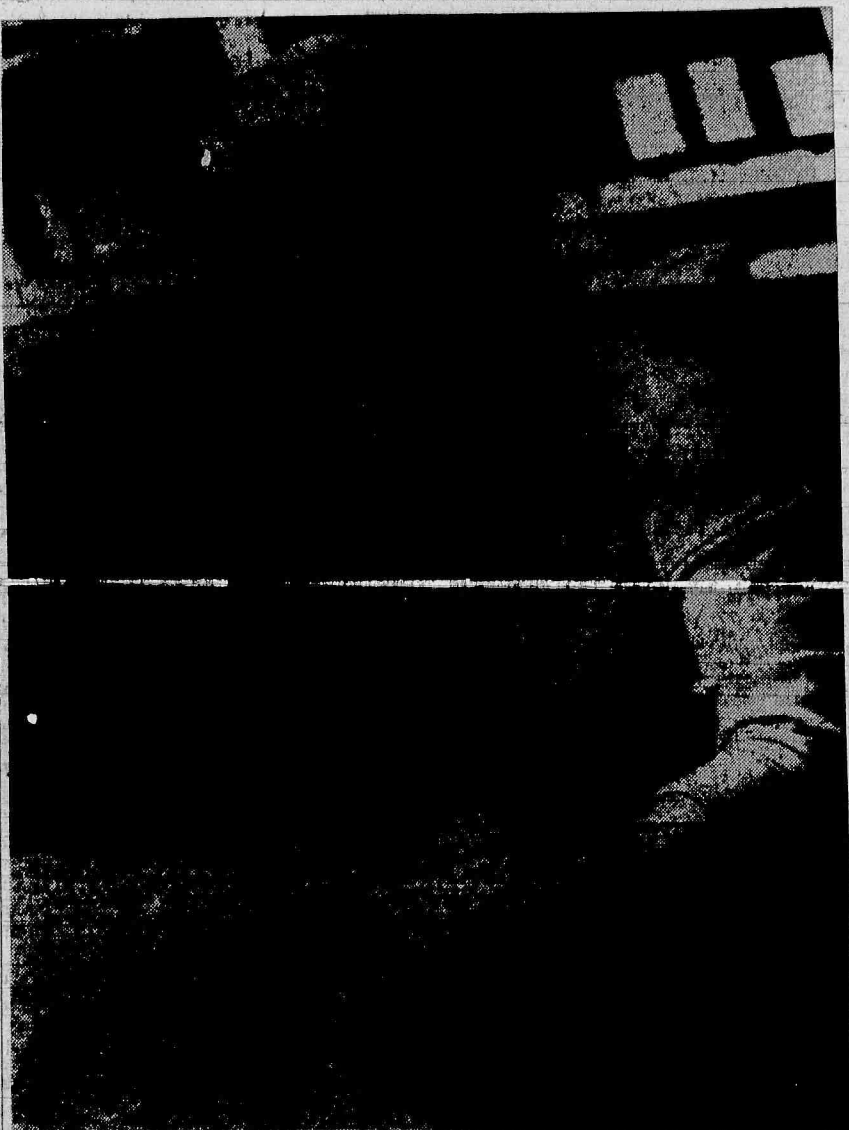
Joseph Casale is life long resident of Belleville said he was graduated from School 5 and then Belleville High School in 1956. While at Belleville High School he was chosen the outstanding athlete of the year, and by being chosen a member of the National Honor Society. In 1960 he was graduated from Muhlenburg College, Allentown, Pa., where he took part in both athletic and social events. He was a member of the varsity football team and also a member of PKT social fraternity.

Since graduation, Casale has worked as a formulation supervisor, a laboratory technician, a cost estimator, and a production planning supervisor. He is presently a professional service representative for the Stuart Co. of California, which is the pharmaceutical division of Atlas Chemical Industries.

During this time, Casale has also served his country. He joined the United States Army Reserve in 1955 and was honorably discharged in 1965 after eight years service with the rank of Specialist 5 Class.

Community service is not new for Casale, he said. He is currently the vice president of the Varsity Club and the present secretary of the Board of Trustees of the Belleville Public Library. He was past president and treasurer of the Landolfi Welfare Association and is now a member of the Board of Trustees.

Casale resides at 213 Fairway Avenue, with his wife, a former Belleville teacher, and his two children. Cheryl Lynn is a kindergartener at School 10 and Tracey Ann is ten months old. He is the son of Mr. and Mrs. Ralph Casale of 11 Emmet Street. His sister, (Continued On Page 12)



LAND USE REVIEW — Miss Grace Harris, executive director of the Passaic Valley Citizens Planning Association, points out a change between the 1962 master plan and the

current land use revisions which will be unveiled at a public hearing at the High School January 25 at 8 p.m. Miss Harris' firm is Belleville's planning consultants.

## School Budget Up \$424,024; Board Incumbents Support Plan

A school budget to educate 5,400 pupils in the district for 1968-69 was tentatively adopted by the Board of Education. Public hearing was scheduled for January 29 at 8 p.m. in the School 8 Auditorium.

The total budget is \$4,578,262, an increase of \$424,024 over present costs. The allocation for current expenses is \$4,222,976 which is \$380,444 higher. Capital outlay has been set at \$105,000, an increase of \$17,575. Debt service is \$250,285, down \$3,995.

Town voters will decide only on the provisions for current expense and capital outlay.

All three incumbent school

board members are seeking reelection actively supporting the school budget as part of their campaign. They are Rocco Saletta, Dr. Frank Di Ruggiero and Mrs. Norma McCool.

Teachers and administrative salaries have been attributed as the main cause for the budget increase. The board members said these salaries are responsible for 80 per cent of the total budget.

A new transportation law, adopted July 1 requiring the school district to supply bus transportation for children attending private school between

2½ to 20 miles from the school. Most of the cost is in public carrier fares. But this caused local transportation costs to jump \$22,000.

Textbook purchases caused a \$16,000 account to spiral to \$35,000. The budget also had to provide increases in fixed charges as social security, insurance and retirement benefits. This reflected a \$20,000 increase.

The capital outlay account went up to provide for building equipment which meant a \$48,000 increase.

## Valley Residential Areas Preserved

The future character of Belleville extended over the next 25 years will be exposed to residents January 25 when the Planning Board unveils its revisions of the master plan's land use proposals.

Belleville "revisited" two decades from now will be a community with sufficient parking facilities, large complexes of multi-family dwellings (perhaps garden apartment and high rise structures), more parks and public properties, a large network of roads and highways along the Passaic River near Newark, Kearny and North Arlington, and unification of the commercial districts.

All these things, according to the town planners and their consultants, the Passaic Valley Citizens Planning Association, form a comprehensive development plan which may save Belleville from "stagnating, eroding and becoming indistinguishable from the amorphous urban mass which currently blankets large sections of Northern New Jersey."

Following public disapproval of the master plan when it was presented to residents in 1962, the town government and planners summoned

their consultants in 1966 to update the plan, get it in shape and make it acceptable to citizens.

### Hope for Support

So far, the land use portions of the revised plan has been completed. Two other parts, a community facilities and traffic and circulation proposals will complete the plan which the planners hope will win support of residents interested in the overall good planning of the community.

This will be an important year for Belleville in the area of municipal planning. By the end of 1968, the planners hope to adopt the master prospectus as its guide, and will ask the Town Commission to pass ordinances enabling the provision of the plan to become reality.

These ordinances, apparently would change the zoning of certain areas of this almost completely developed urban-fringed community to control future construction of developed property. It would also lay the ground work for urban renewal projects, which are also still floating in the ether.

The master plan revision has divided Belleville into three sections. The first, the area comprising the Valley, extends from Washington Avenue east to the Passaic River between Nutley and Newark. The most changes in the plan were made in this section.

Originally, the plan had designated the area for industry only. However, planners have now preserved two residential neighborhoods along Stephens, Ralph and Davidson Streets between Bellavista Avenue and Joralemon Streets. This part of town will be set aside for single and two-family homes. The reason for this residential preservation is based on the fact that there remain many fine homes in the old Valley section. While the deterioration throughout this district is considerable, the planner didn't feel the Valley should be cleared entirely of its residential neighborhoods.

### Silver Lake Plan

Section two in the Belleville division is the Silver Lake area which extends from Belleville Avenue south to Newark between Bloomfield and Newark.

The third section comprises the remainder of the town.

The most changes in the (Continued On Page 2)

## Belleville Jaycees Honored

Mayor Kenneth D. Smith has proclaimed January 21-27 as Jaycee Week in Belleville and asked local organizations to cooperate in the observance.

He said the purpose of the week is to focus attention on young men and the work they are doing, and emphasize that the Belleville Jaycees are doing an outstanding job in the field of Active Community Development.

He also added Jaycees are proud young men, "Proud of their community because they have helped it grow; proud of each other because they know civic work builds men as well as communities. Through their work in youth welfare, civic and I wholeheartedly support (Continued On Page 12)

## Local Kiwanis Club Selects New Officers

The Branch Brook Belleville Kiwanis Club has elected Salvatore Biscardi as president for 1968. He assumed office at an installation dinner held at Partillos on Tuesday.

Biscardi is a charter member of the club and has served as a director and vice president before taking over his new duties. He is employed by General Foods Corporation as chief pharmacologist in charge of research and development, graduate of Syracuse University, a previously served the drug industry abroad for a period of 10 years before assuming his present position.

Biscardi is a resident of Glen Ridge at 585 Ridgewood Avenue where he lives with his wife, Lea and three children, and is active in local civic affairs.

Also elected for the ensuing years are: William Hettenbach of Bloomfield as first vice president, Irving Hertzberg of Glen Ridge as second vice president, Sigmund Swerdki of Belleville, treasurer, and Ruell F. Hopkins of Belleville, secretary.



JAYCEE PROCLAMATION — Mayor Kenneth D. Smith signs a proclamation naming January 21-27 as Jaycee Week in Belleville. He asked local organizations to cooperate in the

observance. Looking on are Caesar Romano, John Stetz, Mero Newton and Emile Brauer.



CANDIDATES Michael Albertine and Joseph O'Ambola spoke at the Candidates Night program this week. Paul J. McDonald, who was another candidate in the election withdrew his name from the roster.



# Planning Consultants Endorse High Rise Apartments

(Continued From Page 1)

master plan, according to Miss Grace Harris, executive director of the Passaic Valley Citizens Planning Association, are in the Valley area.

The School 9 site has been expanded to provide a park and playground in a block nearby. To accommodate this park Stephens and Ralph Streets will be closed on either side of School 9.

The second residential area in the Valley is located in the southerly section along Cortlandt and Stephens Streets between Bayard Street and Belleville Avenue.

**Circulation Improvements**

The planner will close several streets to keep industrial traffic off the residential thoroughfares such as Terry Street between Ralph and Stephens Streets and Terry Street between Davidson and Main Streets. New loop streets will be installed to facilitate residential traffic. Meanwhile, industrial traffic will use either Main or Cortlandt.

Washington Avenue has been set aside for offices, commercial districts and some multi-family uses. The block around town hall will be set aside for public use as off-street parking. To the south between Belleville Avenue and Williams Street from Washington Avenue to the railroad has been designated for general commercial uses, including new stores and off street parking. Between Williams and Cleveland Streets from Washington Avenue to the railroad, multi-family uses have been established.

The planning board hasn't discussed the type of multi-family installations they would prefer. The choice, it seems, includes garden and high rise apartments. Miss Harris favors high rise construction.

In the Silver Lake section much of the land has been shown for multi-family and two-family homes. The previous master plan does not.

The westerly side of Belmont Avenue will be an industrial tract. Commercial facilities will locate along Franklin Avenue.

A multi-family zone between Academy and Mill Street from the rear of the commercial properties to Union Avenue is planned in the southern area.

There are several tracts proposed for future parks. These include an area off Fireway Avenue adjoining the present park; an expansion of the pistol range site in the vicinity of Hoover Avenue; an area off Union Avenue between Campbell Avenue and Crest Drive and an area off Rutgers Court near the Synagogue; a park off William Street between Bridge and Clinton Street and an area in the vicinity School 4.

**Biggest Changes**

The most pronounced change in the revised plan over the 1962 master plan include the preservation of two residential areas in the Valley rather than total industrialization of this section, which has been proposed.

The former plan showed

ned around School 4 between Magnolia Street and Watchung Avenue. To create the park, Watchung Avenue will be closed between Cross Street and Franklin Street.

The planners have done work on eliminating dead end streets by making them into loop streets over the bed of the former Morris Canal. This improvement in circulation will make it easier for emergency vehicles to get in and out. Dead-end streets will be looped from Acme to Wallace Streets; Maple Avenue to Montgomery Place, and Cuzzo Street to Rocco Street.

In Silver Lakes district a scrap metal yard between Heckel and Honnis Street will become a playground.

Section three, which is the newer part of Belleville, will be almost completely residential and public used property. Commercial areas will be spotted along Franklin Avenue; at Jorammon Streets and along Passaic Avenue between the Nutley boundary and Chestnut Street.

A multi-family zone between Academy and Mill Street from the rear of the commercial properties to Union Avenue is planned in the southern area.

There are several tracts proposed for future parks. These include an area off Fireway Avenue adjoining the present park; an expansion of the pistol range site in the vicinity of Hoover Avenue; an area off Union Avenue between Campbell Avenue and Crest Drive and an area off Rutgers Court near the Synagogue; a park off William Street between Bridge and Clinton Street and an area in the vicinity School 4.

**80 Per Cent Union College Students Get Financial Aid**

Eighty percent of the 755 students enrolled in Union College's Day Session are receiving some form of financial assistance in the current semester, it was reported by Mrs. Paul W. Selby, financial aid officer.

The 600 students with some form of financial aid qualified for 763 separate financial aid programs.

"This means some of our students are attending college by qualifying for three or even four different means of financial assistance," Mrs. Selby said. "We have one student, for example, who is a veteran who qualified for aid under the so-called Cold War G. I. Bill, holds a scholarship awarded through our College, and qualified for federal work study assistance. There are many more who are combining scholarships, loans and employment to finance their college educations."

# Rocco Saletta Seeks Re-Election To Belleville Board of Education

Three years ago, I asked the people of Belleville to elect me to the Board of Education. This they did and I have done everything to the best of my ability to see that I fulfilled my campaign promises.

Election time has come again and it is up to the citizens of Belleville to decide whether they would like to return me to office. There are seven candidates running for three seats on your school board; therefore, the people must ask themselves who would be the most qualified to be entrusted with seeing that the policies made by the board are in the best interest of the children, parents and taxpayers.

It is my opinion that the election for the Board of Education is of the utmost importance for we elected representatives have a great responsibility in molding the future citizens of our community, state, and country.

Fully realizing the importance of this position, I'm seeking re-election to further our common goal of giving to Belleville a solid educational program.

During the past three years I have strived to reach this goal and I sincerely believe that my efforts were fruitful in that many gains have been made in our school system. But I will be the first to admit that the job is not yet fully completed. However, with your help in returning myself to office, we can further attain the ideal situation of having a school system in Belleville which would be second to none.

During my past term, I have devoted my time untiringly to your school board serving both as vice-president and currently as president. I have been sincere in all my efforts and everything I have done has been with the idea of bettering the school system.

In the weeks to follow, I will elaborate on what I feel confronts us in our effort to establish this superior school system.

I have no doubt that our efforts can be fruitful and our goals attained. Therefore, please consider me as your candidate and vote 4A.



ROCCO SALETTA

Factory-to-You — LUXURIOUS

## Leather & Suede Wear

COATS - JACKETS - SKIRTS - PANTS

WOMEN'S • MISSES' • MEN'S • BOYS'

Quality, Creative Design, Selections, Styles, Colors

FREE Full Name Monogram and Souvenirs

CUSTOM-MADE POLICE LEATHER COATS, MOTORCYCLE RIDER JACKETS AND PANTS

FACTORY EXPERT REPAIR SERVICE

### PASSAIC LEATHER COAT CO., INC.

HOURS: MONDAY THRU SATURDAY 9-4 — Established 1935

ALSO AT **Passaic Leather Co.**

83 PASSAIC ST., GARFIELD 471-0084

## Salon De Phillipe

"For the Ultimate in Hair Fashion"

"The Salon De Phillipe Concept"

Your beauty is waiting for its moment, and now that you have discovered Salon De Phillipe your moment has arrived. The woman who stands out is the one who knows how to make the most of her looks. This is why we at Salon DePhillipe invite those who have not tried us to step into our world and see what beauty is all about.

**Want a COLOR CHANGE?**

Now is the time. Be a blonde, have frosting or highlight your own hair.

**MR. PHILLIPE**

can give you that salon De Phillipe color that looks as natural as if you were born to it.

1 Process Touch Up	\$6 complete
2 Process Touch Up	\$10.50 complete
Frosting	\$15 complete

Choose one of our expert stylists to give you that "Salon De Phillipe" look.

Miss Pat, Miss Linda, Miss Gail, Miss Barbara, Miss Maryanne, Miss Flo, Miss Kathy

**COLORIST—Mr. Phillipe**  
**TECHNICIAN—Mr. Joseph**

**100% HUMAN HAIR**

Wiglets	13.95
Wigs from	29.95
Falls	49.95

**Visit Our Boutique & Gift Shop**

For a different and unusual gift There's no need to have a hair appointment—come in and browse in our gift section anytime.

<b>HAIRCUT</b>	<b>Try Our New Champagne Body Wave</b>	<b>Hair Straightening</b>
Any Style	For today's short and curly look. A whole new idea in permanent waving!	complete
<b>\$150</b>	<b>\$7.95</b> from & up	<b>\$10</b>
	given by our technician	
	MR JOSEPH	

361 Franklin Av. Nutley 661-1366  
Phil Catalio, Proprietor

Tues. Wed. Thurs. 9 to 6 P.M. Fri. 9, Sat. 8:30 to 6

**DR. A. J. SHACK**  
**DR. E. L. SHACK**

ANNOUNCE THE OPENING OF A BRANCH OFFICE FOR THE PRACTICE OF OPTOMETRY IN BLOOMFIELD, NEW JERSEY

AN APPOINTMENT MAY BE MADE AT EITHER OFFICE

NEWARK OFFICE: 107 BROADWAY PHONE: 482-3330

BLOOMFIELD OFFICE: 673 BLOOMFIELD AVE. PHONE: 748-1234

BETTY BERRA 667-7902

RICHARD KAPRAL 484-9579

## Antiques & Oddities

88 WILLIAM STREET BELLEVILLE, N. J.

Hours: Mondays, Thursdays, Saturdays, 10 a.m. to 4 p.m.

# SHOE SALE

FOR THE ENTIRE FAMILY

<b>Women's Shoes</b>	<b>Men's Shoes</b>
Naturalizer, Life Stride	Jarman, Verde
Viner, Hush Puppies	Pedwin, Hush Puppies
Dress & Sport Styles	Includes Boys Styles
<b>7<sup>90</sup> to 13<sup>90</sup></b>	<b>8<sup>90</sup> to 14<sup>90</sup></b>
VALUES TO \$18	VALUES TO \$20

**Women's BOOTS**

Greatly Reduced

ALL SALE SHOES—Not All Sizes in All Styles

UNI-CARD

ALL SALES FINAL No Exchanges or Refunds

"Buy Brands You Know—Brands You Trust"

# TANNEN'S

## SHOE SHOP

141 Washington Ave. Belleville Center

PHONE: 759-6548 • OPEN FRIDAYS TILL 9 P.M.

## We will CUSTOM Tailor Your Slipcovers AT SALE PRICES

**Sofa OR 2 Chairs 43<sup>77</sup>**

OUR REGULAR \$69 VALUE

Shop-At-Home Service at these Sale Prices

**Best Workmanship**

- Overlocked Seams
- Brass Zippers—no rust marks
- Pin fitted in your own home
- Washable fabric treated with soil resistant "Scotch-Gard"
- "Salvalex" finished for longer wear

3 PIECE SECTIONAL REG. \$119 ..... **\$98**

## BERNICE decorators

351 PASSAIC STREET Half Block off Main Avenue

PASSAIC PR 7-6840

**DRAPERY SPECIAL**

Ceiling-to-floor and wall-to-wall contemporary and period panels and solid colors, custom made to your order any way you prefer.

ANY LENGTH **16<sup>97</sup>** pair

## De WITT SAVINGS AND LOAN ASSOCIATION

STATEMENT OF CONDITION

December 31, 1967

<b>ASSETS</b>	
First Mortgage Loans	\$27,148,628
FHA Improvement Loans	73,295
Loans Secured by Savings	333,675
Real Estate Sold on Contract	17,537
Real Estate Owned	9,588
Federal Home Loan Bank Stock	240,000
Other Investments	5,000
U. S. Government Securities	1,691,781
Cash	760,593
Office Building and Equipment	208,041
Prepaid FSLIC Premium	288,965
Deferred Charges and Other Assets	3,405
<b>Total Assets</b>	<b>\$30,780,508</b>
<b>CAPITAL, LIABILITIES AND RESERVES</b>	
Members Savings	\$28,446,516
Loans in Process	7,720
Other Liabilities	52,773
Deferred Income	26,445
Reserves	2,247,054
<b>Total Capital, Liabilities and Reserves</b>	<b>\$30,780,508</b>

**FEDERAL HOME LOAN BANK SYSTEM MEMBER**

**INSURED**

Effective January 1, 1968, the dividend rate will be 4-3/4% paid and compounded quarterly.

## De WITT SAVINGS and Loan Association

463 Washington Avenue, Belleville, N.J. 07109

Telephone: 759-5264

Open Daily, 9 A.M. to 4 P.M. Also Monday Even, 6:30 to 8 P.M.

MEMBER: Federal Savings and Loan Insurance Corporation and Federal Home Loan Bank

**OFFICERS**

JOHN P. DAILEY President

ROBERT M. WILLIAMS Executive Vice-President

CHARLES M. NUTT Vice-President

AUGUST PLENCE, JR. Vice-President

BRUCE W. MILLER Treasurer

Rena F. Lynch Secretary

WILLIAM ABRAMSON Assistant Treasurer

**DIRECTORS**

William Abramson

Siegfried G. Bart

Frank Bridge, Jr.

John P. Dailey

Henry A. DePhillips

George D. Haslam

Clarence R. Lommerlin

George E. Miller

Charles M. Nutt

August Plerce, Jr.

John L. Plonson

Harry Ziegler

**COUNSELORS**

Griffinger & Conlon

Smith, Kramer and Morrison

Keenan and Finch

Charles A. Gebhardt

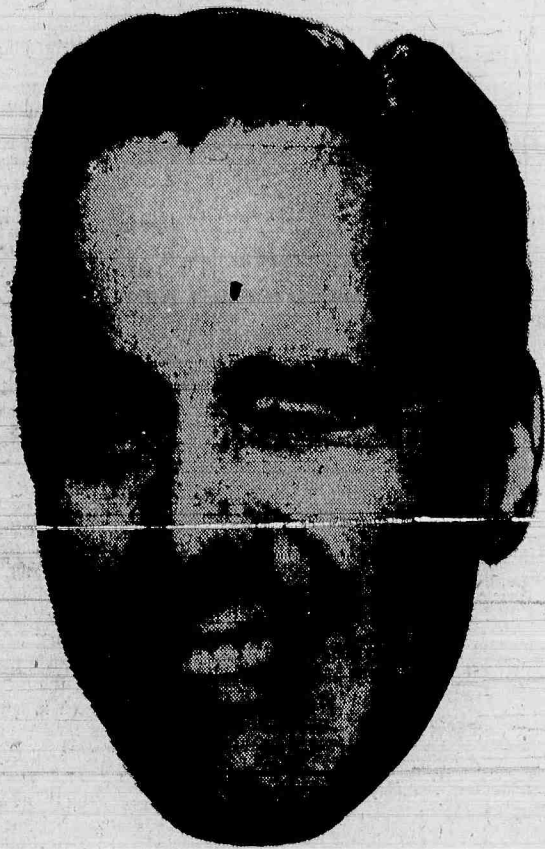
**AUDITOR**

Donald S. Trien

Certified Public Accountant



# WORTH WAITING FOR...



The Official

# GRAND

# OPENING

of the  
**8 CICCOLINI  
BROS.**

Furniture • Appliance

**THURSDAY, JAN. 18<sup>th</sup>  
at 9:30 A. M.**

- SURPRISES • SAVINGS
- FREE DRAWING ON  
A COLOR TV

**537 Franklin Ave., Nutley  
661-2100**

## Home Christmas Display Contest Has 3 Winners

The Belleville Recreation Department, directed by Commissioner William H. Cullen, has again conducted a home Christmas display contest to encourage our residents in the observance of the Christmas season.

This year the commissioner asked the Belleville Woman's Club to do the judging. Ladies from this very active group did an "admirable job of judging," Cullen said. They had sub-committees tour every street in Belleville making final selections. Then another committee did the final judging and came up with excellent choices for winners. These winners received handsome prizes from the Recreation Department.

Winners in the contest were Mr. Peter Fazio of 15 Hewitt Avenue, W. Logan of 712 Belleville Avenue, Lawrence Fitzhenry of 23 Lloyd Place and Pallante of 29 Clearman Place.

It seemed that the judges leaned toward the simple and original displays. The real point, however, was that many homes were beautifully decorated. The judges all reported that their job was a pleasure

because of the many fine displays.

On the Sunday before Christmas Santa Claus made his annual tour of the Belleville. The jolly gentleman was ably assisted by members of the P.J. McDonald Association led by P. J. himself. Santa's Belleville Tour which is arranged by the Belleville Recreation Department, was further assisted by Corino & Sons who donated the use of a truck and flat bed trailer for Santa's sleigh. Driver of the truck was Angelo Corino. Thanks to the Public Safety Department and Mayor Ken Smith there was a police escort for Santa, Cullen said.

Children of the town were delighted to hear Santa's "Ho, Ho, Ho!" and even more pleased to receive peppermint canes from Santa and his helpers. The canes were donated by the P. J. McDonald Association. There were also lollypops donated by Jolly Cleaners, boxes of cookies donated by Royal Shop-Rite, combs donated by Kondreck Photographers and rings from Belleville Travel Service.

## Red Cross Begins First Aid Courses

A new course in Advanced First Aid began yesterday at the Newark District headquarters of the American Red Cross, 710 High Street. On Tuesday a course to train Red Cross First Aid instructors will open at Essex Chapter headquarters, 232 South Harrison St., East Orange.

Both courses are offered free of charge and are taught by qualified Red Cross instructors.

The Advanced First Aid Course is open to candidates 16 years of age or over who currently hold a valid Standard First Aid certificate. Those

wishing to take the instructor course must be 18 years of age and hold an active Red Cross Advanced First Aid certificate.

The advanced course will be held on Wednesday evenings through February 28 from 7:30 to 9:30 p.m. while the instructor sessions will be held on Tuesday evenings through February 27 from 7:30 to 10:30 p.m.

National Red Cross certificates will be presented to all students who successfully complete either course.

For enrollment or further information concerning the Advanced First Aid Course contact Rolland H. Essex Chapter Safety Services Director at the Newark District office or call 642-2883.

Candidates interested in enrolling for the First Aid Instructor Course should contact Mrs. Martin Amster, First Aid chairman for the Oranges and Maplewood District at Essex Chapter headquarters.

## Archery Classes Held Thursdays For Boys, Girls

Jon Don, director of recreation activities at the Friendly House reports continued junior archery activity under the auspices of the Recreation Department.

The boys division of the Recreation Junior Archery program had a series of competitions with the following entering the winners circle: Joe Marchese, Jerry Sena, Phil Bruno, Barry Fletcher, Mike Light and Robert Petrella.

Archery classes are held each Thursday night at the range for boys and girls. Members of the adult group, the Silver Arrow Bowmen, offer free instruction.

Starting January 15th the Silver Arrow Bowmen will host a four man team league. The Flint Round will be conducted according to NJAA rules. Those interested may contact Mario Mustacchio at the Friendly House any Thursday evening.

When have you done something specific for the children, or a particular child, in your community.

**YOU'RE  
SURE  
to  
AGREE**

**R**

**GRASS**

**IS**

**GREENER**

IN N.J.

**IF YOU NEED  
GLASSES ...**

**No Need  
to Travel  
to N.Y.C.**

**Our Service  
is COMPLETE  
backed by  
2 Generations  
of Skilled  
Opticians**

**BRING YOUR MEDICAL EYE  
PHYSICIAN'S PRESCRIPTION TO US**

- ★ Thousands of Frames, Styles and Colors to select from
- ★ Special Attention Given to Children's Fitting Problems
- ★ Broken Frames Replaced while you wait
- ★ 4 Day Service on Cataract Lenses
- ★ Plastic Lenses
- ★ Safety Lenses—1 Year Warranty
- ★ Broken Lenses Replaced from Fragments

**HEARING AID SALES-SERVICE-REPAIRS**

**J. E. COLLINS**

DISPENSING OPTICIANS

Call us for the name of an eye physician (MD) or consult your own medical doctor.

22 BROADWAY, PASSAIC  
Call 778-4832  
Open Wed. & Fri. eves. 5:30-9

**FOR EXPERT HOME  
IMPROVEMENTS**

CALL **Eagle** MA 3-3917

A TRUSTED NAME FOR 22 YEARS!

LET EAGLE QUOTE A FAIR  
PRICE FOR A PERFECT JOB

ROOFING • KITCHENS • BATHROOMS  
HEATING • MASONRY • VULCANIZATIONS  
OR LINE WORK IN THE HOME

**HOME IMPROVEMENT CO., INC.**  
570 RAYMOND BLVD. NEWARK, N.J.

STATEMENT  
OF  
CONDITION

**YOU ARE INVITED TO  
MAKE USE OF ALL  
OUR BANKING  
SERVICES.**

- Checking Accounts
- Savings Accounts
- Business Loans
- Personal Loan Dept.
- Trust and Fiduciary Department
- Loans and Collateral
- Safe Deposit Vaults
- Home Improvement (FHA) Loans
- Financing for Car Buyers
- U.S. Savings Bonds Sold (As Agent for the Federal Gov't.)

AS OF DECEMBER 30, 1967

**RESOURCES**

Cash and Due from Banks	\$ 4,162,466.70
U. S. Government Securities	12,755,419.41
State, County, Municipal Bonds	4,605,111.40
Federal Reserve Bank Stock	57,000.00
First Mortgage Loans	4,760,027.59
Government Guaranteed or Insured Loans	986,393.71
Loans on Collateral	2,548,463.50
Installment Loans	5,267,771.17
Other Loans and Discounts	1,204,457.08
Bank Buildings, Fixtures, Parking Lots	424,955.90
Other Real Estate	13,045.00
Interest due us and Prepaid Accounts	198,058.01
<b>TOTAL</b>	<b>\$37,003,189.47</b>

**LIABILITIES**

Deposits	\$33,883,445.20
Unearned Discount	721,863.12
Accrued for Interest, Income Taxes, Dividends, etc.	186,792.38
Capital, Surplus, Undivided Profits and Reserves	2,211,068.77
<b>TOTAL</b>	<b>\$37,003,189.47</b>

**DIRECTORS**

**B. Thomas Aitken**  
Chairman of the Board

**S. Thomas Aitken**  
Vice President

**Othmar B. Bart**  
Vice Chairman of the Board  
President, Paterson Brass Mfg. Co., Inc.

**Frank J. Bolen**  
Executive Vice President and Trust Officer.

**Albert P. Luscombe**  
President

**Ray D. Pest**  
President, J. Frank Post, Inc.

**COUNSEL**  
Charles A. Gebhardt

**OFFICERS**

**B. Thomas Aitken**, Chairman of the Board

**Albert P. Luscombe**, President

**Othmar B. Bart**, Vice Chairman of the Board

**Frank J. Bolen**, Executive Vice President and Trust Officer

**S. Thomas Aitken**, Vice President

**Edward K. Albretsen**, Cashier and Assistant Trust Officer

**Robert M. Kennedy**, Assistant Vice President

**Sigmund E. Swiderski**, Assistant Vice President

**Louis D. Ventura**, Assistant Vice President

**Christine Kaiser**, Assistant Cashier

**Dorothy Schaefer**, Assistant Cashier

**Theodore Zuczek**, Assistant Cashier

**PEOPLES NATIONAL  
BANK  
AND TRUST  
COMPANY**

WASHINGTON AVE.  
AT VAN HOUTEN

**BELLEVILLE, N. J.**

MEMBER FEDERAL RESERVE SYSTEM • FEDERAL DEPOSIT INSURANCE CORPORATION

**Friends, Romans, Customers**

**We've got  
a BEEF!**

*It's the best  
and Special*

for Fri. Sat. & Sun.

1 lb. Hot or Cold  
JUICY, TENDER

**Roast  
BEEF**

AND 1 PT.  
DELICIOUS  
HOME-MADE  
GRAVY

99¢

FOR BOTH

1 lb. Lean Roast Pork	1 <sup>89</sup>
1 lb. Hard Salami	1 <sup>29</sup>
1 lb. Italian Cappicalo	1 <sup>49</sup>
1 lb. Amer. Cheese	79¢

EXTRA LEAN BOILED

Pick up our NEW FREE  
Catering Brochure—  
it's so clever!

On Sale  
WEEKDAYS  
ONLY!

HAM

1<sup>09</sup>

by the pound

Towne

OPEN 365 DAYS A YEAR

Free Parking  
PL 9-9870

650 Joralemon St.; cor. Franklin Ave., Belleville



# The Belleville Times

The Only Newspaper in the World Interested in Belleville, N.J.

Published Every Thursday at 246 Washington Avenue,  
Belleville, New Jersey, 07109, by The Belleville News Corp.  
Telephone (201) 759-3200

FRANK A. ORECHIO, Publisher

HENRY F. MARTYN, Assistant Publisher

PETER A. DVARACKAS, News Editor

Thursday, Jan. 11, 1968

The Belleville Times, Belleville, N.J.

Page 4

## School Board Election 1968

Board of Education election time once again is closing in upon Belleville residents with the usual large slate of candidates (and three incumbents) running for the available three year terms. The race for a seat as school trustee has in the past been more of a bitter fight rather than constructive competition based on important educational issues.

Hopefully, this year may signal a change in the manner in which candidates conduct their campaign. A look back at the past violent school election has a very important use as it serves to determine the shape of things to come. It enables us to form an explicit code of ethics and election principles.

Belleville citizens must discern educational ideas from traditional be-

liefs and smear attacks. Education is big business in Belleville. The school board spends more of the taxpayer's dollar than any other agency. And the people we select to serve as trustees guide the destiny of our children. These are important things to consider when reviewing campaign of each candidate by locating the meaning of issues in dispute and solving them with sophistication.

This suggests that it will be easy for residents to decide which school board hopefuls are eager to sponsor fine educational programs from those who would see fit to run a campaign just within bounds of the defamation laws. With this goal in mind, townsfolk can cut through slogans to analyze genuine problems and issues.

## Vietnam Casualties Continue to Mount

The war in Vietnam continues to exact its toll of U.S. dead and 1967 has proven to be the most costly year of fighting so far. But many have an exaggerated idea of the death rate as compared to other wars.

This is partly because the fighting in Vietnam has dragged on for so long—four years—and threatens to drag on for additional years. It is also a result of the sharp rise in casualties (and fatalities) which has occurred this year.

The Korean War, which lasted three years, cost the United States over 33,000 dead and more than 100,000 wounded. In five years of fighting in

Vietnam American deaths have totaled under 15,000. Thus fatalities are less than half the number sustained in the Korean War.

Casualties (wounded) are running close to 90,000 in the Vietnam fighting and this figure is approaching the Korean War total. Most of the casualties, or wounds, are minor, recovered in a short time.

One should not dismiss lightly or statistically the loss of 15,000 lives in Vietnam even though the five-year total is less than half the annual death toll on U.S. highways. There figures simply provide the reader facts upon which he can formulate a sound perspective.

## Karajan and The Opera

Beyond much doubt the man who stands closest to the reputation as the world's leading conductor is Herbert von Karajan. An Austrian who was once the darling of Hitler's Third Reich, Karajan recently held simultaneously four incomparable appointments: lifetime musical director of the Berlin Philharmonic, principal conductor of the London Philharmonic, general director of the Vienna State Opera (and Salzburg Festival) and director at La Scala in Milan.

He has relinquished two of these posts and the latest rumor in one musical world is that he might be lured into accepting (at a reported \$300,000 a year) the directorship of the Chicago Symphony Orchestra or such a post in New York.

What makes all this of interest to the average musical yokel is that

Karajan seeks to take good music to the common man via television. And he is considered the conductor with the talent, power and appeal to sell such music to sizable television audiences, if anyone can.

Of course, it's unlikely that heavy doses of classical music, as produced in European theaters, would ever deeply penetrate average American homes. On the other hand, Karajan's classical music has a power and force which appeals to men as well as women. He is considered the conductor most likely to sell his product widely and his stated goal is to see if he can capture large audiences via television.

Thus music lovers may soon witness a significant test — Karajan against a certain, traditional American inertia concerning classical music.

## Holland's Contribution

One of the respected, veteran members of the United States Senate is Spessard Holland of Florida. A former Governor, the first southerner to sponsor and have enacted a civil rights bill, a sound progressive in the field of social progress, Holland is accepted by his colleagues as a conscientious public servant, of which there are too few.

During the closing days of the first session of the 90th Congress it was Holland who succeeded — the first time a Senator had done so in years — in forcing obligation and expenditure reductions above those accomplished in appropriation bills. These included a 2% reduction in spending for salaries (accomplished by not filling vacancies which occur) and a 10% reduction in controllable items in the executive departments.

## Students and National Power

Ali across the nation university administrations are facing serious situations which have developed because of snowballing student demonstrations, protests, riots, sitdowns, etc.

Student activities, many of them illegal, are threatening to obstruct the educational process, to produce chaos, violence and even anarchy where order and tranquility traditionally have been accepted as desirable.

Firm action is needed at colleges and universities at this time to preserve an educational atmosphere and way of life peculiar to this nation. Student rioting and political activity, common in some foreign countries for many years, is not the American way.

No one would deny students their rights and freedoms but just what

rights can they claim? They have no right to manage or direct policy at public or private educational institutions. Few pay taxes. Few have had the experiences to lead the nation politically or in the administrative or educational fields.

All are being provided an education, at least in part, by elder citizens, parents, the state or federal government or a private institution.

Admittedly, youth is more easily impressed, and led, by agitators and organizers. Because a hard, traveling core of these trouble-makers is fanning flames and spreading hatred and anti-Americanism the student problem continues to grow. School administrations and law enforcement authorities should deal firmly with illegal campus activities before matters get worse.

## Seems Only Yesterday

### ONE YEAR AGO

Although analysis of the Third River showed it to be clear, a pollutant in it killed thousands of fish and health officials were concerned.

\*\*\*

It was announced that Nutley's traditional program of music would be held in the High School auditorium. No tickets were required.

\*\*\*

High School Students were invited to a day of skiing at the Great Gorge Lodge in McAffee during the holiday recess.

### FIVE YEARS AGO

The Nutley Board of Education released its tentative 1963-64 budget. The figures showed an increase of \$205,170.

\*\*\*

The Rotary Anns held their Christmas luncheon and program at the home of Mrs. Arthur D. Wilcox on Rhonda Avenue.

\*\*\*

Clifton defeated Nutley High's basketball team with a score of 63-57.

### TEN YEARS AGO

John Blaney of Chestnut street and Michael Ritacco of Conover avenue were sworn in as permanent members of the Fire Department by Mrs. Florence E. Rutan, Town Clerk.

\*\*\*

Vandals smashed 36 windows in the clubhouse of Federal Telecommunications Company.

\*\*\*

A motorist who told police he was "blinded" by the headlights of an on-coming car smashed into the rear of a truck on Hancox avenue and as a result a passenger in the car required medical treatment.

### 15 YEARS AGO

Commissioner Robert B. Anderson, director of finance and revenue, was elected director-at-large of the national United Cerebral Palsy Association.

\*\*\*

Mr. and Mrs. Joseph R. Malonson, of Nutley announced the engagement of their daughter Carolyn to Corporal Donald Carlson of Mitchell South Dakota.

Clarence L. Vreeland of High street was promoted to accountant by the Prudential Life Insurance Company.

### 25 YEARS AGO

The Belleville-Nutley Tuberculosis association named Mrs. W. Whynall as nurse to succeed Miss Elizabeth Smith of Belleville who had resigned to take a post at a local war plant.

\*\*\*

Foster E. Grossnickle of Elm place left for training at the University of Miami, Coral Gables, Fla. Classified as an aviation specialist, he was granted a leave of absence for the duration from Jersey state teacher's College where he retained a full professorship in mathematics.

### 40 YEARS AGO

Clifford W. George was elected worshipful master of the Nutley Lodge of Masons succeeding Robert M. Forrester.

\*\*\*

The Rotary Club gave a Christmas party for 1200 children at the Franklin theatre.

\*\*\*

Ninety-six attended the annual reunion of the high school alumni.

### 45 YEARS AGO

Mr. and Mrs. Longfelder and daughter Myra of Highfield lane were spending the holidays with friends in Plain field.

\*\*\*

It was announced that Nutley had netted \$2,484 from a post-season game with Ruthersford held at Ashford Stadium.

### 50 YEARS AGO

Nutley was hard hit by the coal strike and town clerk Simon Blum was selling 100 pound bags to those in need. He sold 100 bags the first few days they were available.

\*\*\*

Mr. and Mrs. Roscoe Symond returned home for Christmas after spending seven years in the Philippines.

\*\*\*

Edwin C. Wolfertz who was stationed with the Signal Corps in Jacksonville, S. C., was spending a few days, with his parents on Brookfield avenue.

## Religious Services

BELLEVILLE ASSEMBLY O F GOD, 174-178 Holmes St., the Rev. Anthony DiQuattro, pastor. Sunday — 9:45 a.m. Sunday school; 10:45 morning worship. Wednesday — 7:45 p.m. Bible study.

BELLEVILLE REFORMED CHURCH, Main and Rutgers Streets, Sunday — 9:30 a.m. worship service. Tuesday — 7 p.m. Girl Scouts.

BETHANY LUTHERAN CHURCH, Joralemon and New Streets. Rev. Albert E. Alspach, pastor. Sunday — 8:30 a.m. and 11 a.m. worship service; 9:30 a.m. Sunday school and adult discussion group. Wednesday — 8 p.m. Midweek advent service.

CHRIST EPISCOPAL CHURCH, 395 Washington Avenue. Rev. Fred Long, rector. Sunday — 7:30 a.m. Holy Communion and 9:15 a.m. family service and church prayer and sermon by rector. Wednesday — 10 a.m. Holy Communion and Intercession and healing service.

CONGREGATION AHAVATH ACHIM, Belleville Jewish Center, 125 Academy Street. Rabbi Henry Glaser. Friday — Sundown, lighting of candles; 8:30 p.m. services. Saturday — 9 a.m. services.

FEW SMITH MEMORIAL CHURCH, Union Avenue Little St., Belleville. Rev. Alfred W. Stone, Jr., pastor. Sunday — 9:30 and 11 a.m. worship services.

EVERYMAN'S BIBLE CLASS, Joralemon Street, Belleville. Dr. Emery Kocis, leader. A. Verhagen, song leader. Sunday — 9:30 - 10:30 Bible class.

GOSPEL TABERNACLE OF THE CHRISTIAN AND MISSIONARY ALLIANCE, Hancox Avenue, Nutley. Friday — 7 p.m. Junior Y in the church basement under the direction of Mrs. M. Hopkins. 7:30 -

9 p.m. Baptism by arrangement. Sunday — 9:45 a.m. Sunday school with Bible classes for all ages. John Seazholz superintendent. 11 a.m. worship service with message by the pastor. Choir direction of Edward Haight Jr. 11:20 a.m. nursery is available 6 p.m. Senior AYT; 7 p.m. evangelistic service with message by the pastor.

GRACE BAPTIST CHURCH Overlook and Bremond Street. Rev. John Mair, minister. Sunday — 9:45 a.m. School; 11 a.m. morning worship. 11 a.m. and 7 p.m. service Wednesday — 7:30 p.m. Women's Bowling. Thursday — 7:45 Choir practice.

LITTLE ZION, UAME, 154 Stephens Street. Dr. Mary A. Farrar, pastor. Sunday — 11 a.m. worship service with the message by the Pastor.

MONTGOMERY PRESBYTERIAN, 638 Mill Street. Rev. Howard B. Day Jr., pastor; Mrs. Paul Lewis, organist. Sunday — 9:30 a.m. worship service and church school with adult Bible class; 11 a.m. worship service. Friday — 8 p.m. Senior Choir Rehearsal.

SECOND BAPTIST, Stephens and Academy Street. Rev. Hendersen Goldstein, pastor. Sunday — 9:30 a.m. Sunday school; 11 a.m. morning worship.

SILVER LAKE BAPTIST, Rev. B. Pascale, pastor, 166 Franklin Street. Sunday 10 a.m. Bible school for all ages; 11 a.m. morning worship service; 1:30 p.m. Youth service.

ST. ANTHONY'S 63 Franklin Street. Rev. Titian P. Menegus, pastor. Sunday — Masses at 7:30, 9, 10, 11 and 12 in church, at 11:05 and 12 in chapel. Holy Days — Masses at 7, 8, 9, 10 a.m. and 5:30 and 7 p.m. Confessions Saturdays, eve of First Friday and Holy Days from 4-5:30 and arrangements at 1 p.m. Sun-

days. Marriage arrangements required three months in advance.

ST. PETER'S, 159 William Street, the Most Rev. Joseph A. Costello, pastor. Sunday masses, 6, 7, 8 (high) 9:30, 10:45, 12 auditorium. Daily masses — 6:30, 7:15, 8, 9 a.m. and 7 p.m. First Friday masses at 6:30, 7, 8, 9 a.m. and 7 p.m. (11 a.m. during school year.) Confessions. Saturdays of Holy Days, 4 to 5:30 and 7:30 to 9 p.m. Daily after 7 p.m. Mass. Baptism, Sundays at 2 p.m. Novena in honor of Miraculous Medal, 7:45 p.m. Marriage arrangements should be made six weeks in advance.

TEMPLE MENORAH Bloomfield, Rabbi Nathan H. Fish, spiritual leader, Thomas A. Davis organist and choir director. Friday — sabbath services 8:30 p.m., sermon by Rabbi Fish, "Who Are These Children" Musical rendition by Temple Choir. Oneg Shabbat, Saturday — 9:45 a.m. youth sabbath services by the student council of the religious school under the direction of Stephen Tollin. Services conducted by Barbara Weiss, with the sermonette "Jewish Art" by Sondra Solomon. Youth choir will participate. Rabbi Fish will speak to the assembly.

WESLEY METHODIST Washington Avenue and Academy Street. Rev. Warren P. Sheen, pastor. Rev. Mary Lou Bedarbis, assistant minister. Thursday — 6:45 — Jubilate Choir rehearsal; 7:45 p.m. Chancel Choir rehearsal. Friday — 3:30 p.m. Jr. - Sr. Hi recreation; 7:30 p.m. Cub Pack 301 Committee meeting. Sunday — 9:30 a.m. Church school and Adult Bible Study Group; 11 a.m. Worship Service. Nursery care provided; 6:30 p.m. Jr. Hi Fellowship — Wednesday — 3:30 Dens of Cub Pack 301; 7 p.m. Boy Scout Troop 301.



## Speak Up

### Some More Facts Concerning Belleville's Child Care Center

To the Editor, Times-News:

With regard to your recent story on the proposed Child Care Center, I would like to correct a few items.

After receiving information from the state and federal authorities, I then took my project to the Belleville Community Council and simultaneously to the Board of Education.

Both groups felt the idea should be investigated in detail; a committee formed by members of the Council were active in searching out the questions by both groups.

Prior to attending company school, I tried one more avenue of ASSISTANCE . . . Mr. Clancy of the OEO. He thought the project a good idea and offered his HELP. From reading his statement "getting

a run around from the Board for years," to my knowledge, this had nothing to do with my program. Mr. Clancy did NOT intimate that he had previously thought of a similar program. It is also interesting to note that the proponents of his program are the ones set down in writing by me, given to the Council and the Board, and a copy left with Mr. Clancy.

However, my program did not involve bussing nor the churches, except in the event the schools could not provide the facilities.

As for "mothers that bounce from one job to another," . . . these mothers are also self-sustaining, and the only requirement for admission to MY program is just plain "working mothers."

My intent was to start something which any town needs and could benefit from. I do not like mudslinging nor do I think that pointing fingers at one group or another will accomplish anything EXCEPT stir up resentment and again put our town on the map as a town where there is continual fracas.

I have had nothing but good cooperation and assistance from the Council and the Board and since I have now returned from school intend to pursue the original intent of my After-School Day Care Program and the type of individuals I wish to assist me are not the type that are trying to start arguments.

Patricia M. Diana  
104 Overlook Avenue . . .  
Belleville, N.J.

## No Smoking Resolution Important

"Resolved, that I will not start smoking cigarettes, a habit which may be hard to break, and which may cost me my health and my life."

With youthful cigarette smokers increasing at the rate of more than one million a year, the American Heart Association has proposed the foregoing New Year's resolution for the young people of this country.

The Association pointed out that damage to the heart and lungs begins early among cigarette smokers, and that there is evidence to indicate young tissues are more severely affected than old.

"Before becoming addicted to cigarettes," said the Association, "the young person should know that a number of disorders — among them heart attack, stroke, hypertensive heart disease, lung cancer, emphysema, chronic bronchitis and peptic ulcer — are triggered or aggravated by cigarettes."

"These and other cigarette-associated disorders are responsible for more than 125,000 premature deaths in the United States each year, and are believed responsible for about 20 per cent of all time lost from business and industry," the Association added.

Cigarette smoking is not only costly to health but to the pocketbook as well, the Association said, pointing out that the expense for the first ten years of smoking may well exceed \$3,000 — almost enough to finance one year of a college education.

The Association emphasized that the best way to deal with the cigarette problem is to refrain from taking the first puff. If this is done, said the Association, the individual not only avoids the possibility of illness and premature death but also the added problem of having at some time to discontinue smoking.

Television viewers will be able to find out how much they know about cigarettes and why people — including themselves — smoke when C. B. S. News presents the National Smoking Test, Tuesday, January 15, 1968, from 10 to 11 p.m. EST, in color, on the CBS Television Network, with news correspondents Mike Wallace and Joseph Benti.





**NEW LOCATION** — The Serafino Printing Company, under the dual ownership of Armand Serafino Sr., of 215 Division Avenue, Belleville, and his son, Armand Serafino Jr., of 111 Passaic Avenue, Nutley, recently acquired their new location at 542 Washington Avenue, Belleville. Moving to the Washington Avenue address this past September, the father and son business originated in Newark. Beginning in August of 1933 in the heart first located at North 6th Street. Other locations of the nation's depression the business was started were Railroad Avenue and 314 Market Street. Starting the business with one 10x15

**Keystone Generating Station Aims Electricity to New Jersey**  
Electric power began flowing into New Jersey from Keystone Generating Station in the coalfields of western Pennsylvania. The power reached here through a 22-mile leg of the Keystone transmission system, completed this week by Public Service Electric and Gas Co. The line extends from Holland Township on the Delaware River to Branchburg Switching Station on Route 202.

Completion of the first leg of the 500,000-volt transmission line climaxes a long struggle by the utility. The line was first projected in 1962 but construction of it was blocked in 1965 when Public Service was forced to file petitions with the Public Utility Commission for the right to condemn six parcels of land in Hunterdon County.

Promotion is good for business ventures so long as there is something backing it up.

**Dr. M. Roachvarg**  
Optometrist

PL 9-1497      EYES EXAMINED

132 Washington Ave., Belleville



**FIDELITY**  
UNION TRUST COMPANY  
Main Office: Newark, New Jersey

### Condensed Statement of Condition December 31, 1967

ASSETS	
Cash and due from banks . . . . .	\$ 87,978,370
United States Government obligations . . . . .	98,959,745
Obligations of States and political subdivisions . . . . .	113,600,106
Other securities . . . . .	7,214,203
Federal funds sold . . . . .	5,000,000
Loans (after reserves of \$8,195,288) . . . . .	379,456,079
Bank premises and equipment . . . . .	13,853,457
Accrued interest receivable . . . . .	3,576,054
Other assets . . . . .	558,271
<b>Total assets . . . . .</b>	<b>\$710,196,285</b>

LIABILITIES	
Deposits . . . . .	\$382,127,202
Demand . . . . .	147,825,922
Savings . . . . .	70,517,226
Other Time . . . . .	163,784,054
<b>Total . . . . .</b>	<b>\$600,470,350</b>
Purchase agreement — Bank premises . . . . .	8,479,808
Federal Reserve Bank, remittance account . . . . .	20,395,158
Accrued taxes and other expenses . . . . .	3,172,572
Unearned income . . . . .	8,558,395
Other liabilities . . . . .	143,459
<b>Total liabilities . . . . .</b>	<b>\$641,219,742</b>

CAPITAL ACCOUNTS	
Capital (\$5.00 par) . . . . .	\$ 8,300,000
Surplus . . . . .	43,000,000
Undivided profits . . . . .	14,508,010
Reserve for contingencies . . . . .	8,468,533
<b>Total capital accounts . . . . .</b>	<b>\$ 71,276,543</b>
<b>Total liabilities and capital . . . . .</b>	<b>\$710,196,285</b>

United States Government, State and Public obligations pledged to secure public and other deposits as required by law were \$44,496,843 on December 31, 1967.

Member Federal Deposit Insurance Corporation

#### Directors

**JAMES D. ABLES**  
President, Fidelity Products, Inc.

**LOUIS V. ARONSON II**  
President, Ronsco Corporation

**JOHN S. BACHELLER**  
Senior Vice President and Trust Officer

**LAWRENCE D. BARNEY**  
Chairman of the Board, Wallace & Tiernan Inc.

**PETER CARTMELL**  
Executive Vice President

**ROBERT S. CORBIN**  
President, Motor Finance Corporation

**ANDREW R. CRUMMY**  
Chairman, Gibbons & O'Neil

**C. MALCOLM DAVIS**  
President

**JOHN E. FARRELL**  
Co-Trustee, The Central Railroad of New Jersey in Reorganization.

**ROBERT M. JACKSON**  
Kumson, New Jersey

**ROBERT D. LILLEY**  
President, New Jersey Bell Telephone Company

**DONALD C. LUCE**  
Plainfield, New Jersey

**VIRGINIUS D. MATTHIA, M.D.**  
Hoffmann-La Roche, Inc.

**RICHARD D. NELSON**  
President, The Colonial Life Insurance Company of America

**HUBERT F. O'BRIEN**  
Vice President, United States Pipe and Foundry Company

**IRVING RIKER**  
Chairman of the Board

**S. HARRISON ROLLINSON, JR.**  
President, O'Gorman & Young, Inc.

**HARRIS F. SMITH**  
President, Aero Chemical Products Corp.

**JACK I. STRAUS**  
Chairman of the Board, K. H. Macy & Co., Inc.

**NATHAN H. WENTWORTH**  
Vice Chairman of the Board, The Continental Insurance Companies

#### Directors Emeriti

**ABRAHAM LICHTMAN**  
**FREDERIC W. SMITH**  
**JOSIAH STYKER**  
**EDWARD F. WESTON**

**NEW POSITIVE DRUGS REPLACING OLDTIMERS**

Each new year has brought us new drugs which differ greatly from the guesswork ingredients of past years. It is difficult to realize that less than a hundred years ago, you could count on your fingers the known drugs which could be depended upon to give a positive medical result.

Now the multi-ingredient, hope they work, mixtures are rapidly disappearing. We have single ingredient medicines which can positively cause a desired result. We have drugs which raise or lower blood pressure. Others permit a diabetic to live a normal life. We can fill any prescription.

**YOUR DOCTOR CAN PHONE US** when you need a medicine. Pick up your prescription if shopping nearby, or we will deliver promptly without extra charge. A great many people entrust us with their prescriptions. May we compound and dispense yours?

**ABBOTS DRUG STORE**  
M. A. MURKIN, R.P.  
PRESCRIPTION HEADQUARTERS

531 Washington Ave.  
Belleville  
Phone: PL 9-8181

**JANUARY CLEARANCE**

**SALE**

NUTLEY - BELLEVILLE'S  
Only  
**BUSTER BROWN**  
DEALER

Special  
Odd Lot Of Girls  
**BUSTER BROWN SHOES**  
ONLY  
**4.99**

Complete Orthopedic Shoes Made Plus . . . Orthopedic Prescriptions filled on premises

**Buster Brown**  
Discontinued Styles  
Reg. \$6.99 to 10.50  
**NOW \$5.90 TO \$7.90**

**HUSH PUPPIES**  
Discontinued Styles  
**NOW ONLY \$7.50**

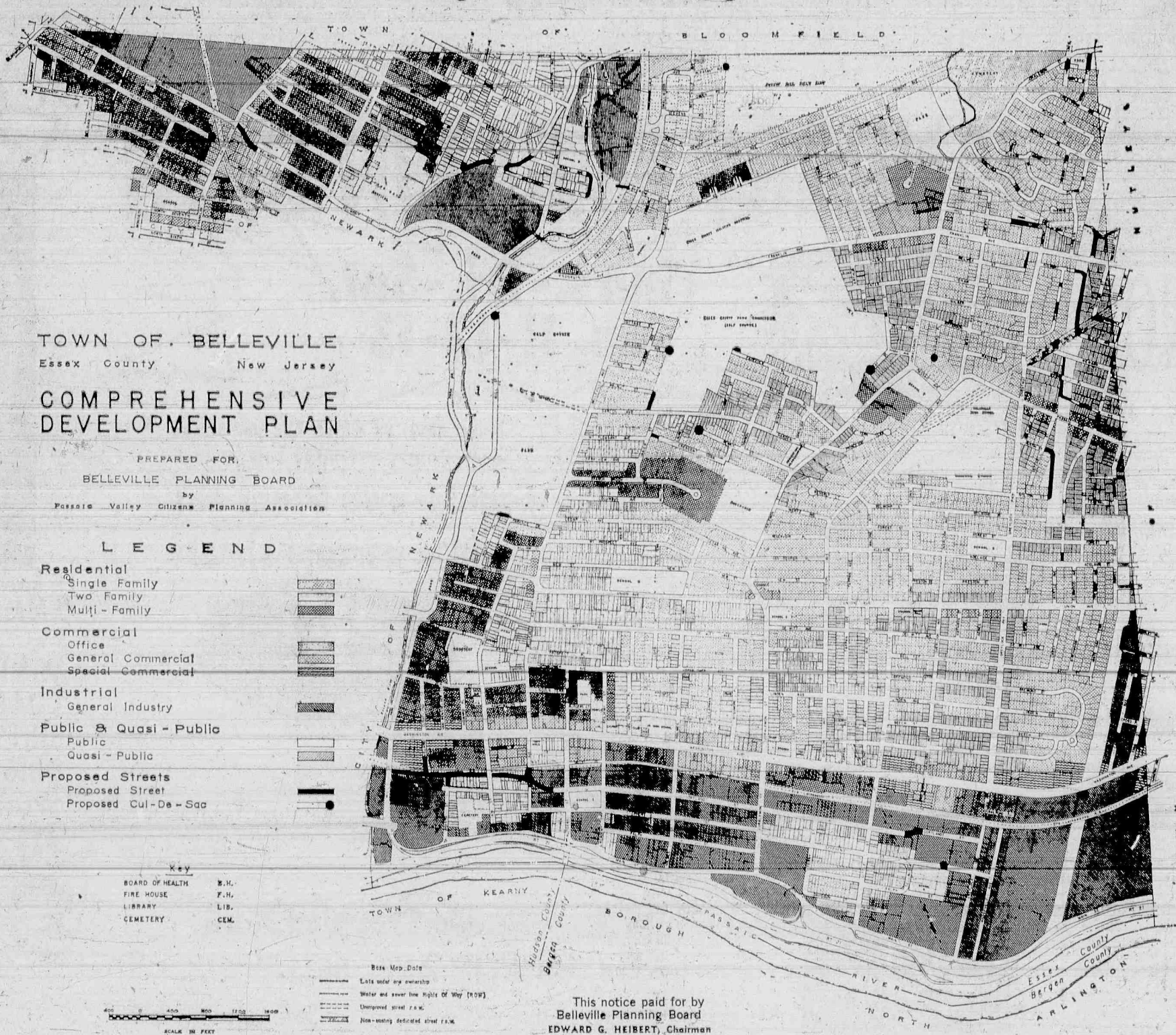
**PLAZA BOOTERY**

483 FRANKLIN AVE.  
NUTLEY




Free Parking At Side Of Building  
Open Evenings 'til 6—Friday, 'til 9 P.M.

## Proposed Land Use Plan of Belleville's Future Master Plan to be Discussed at Public Hearing, Belleville High School, Thurs. Jan. 25, 8 p. m.



This notice paid for by  
Belleville Planning Board  
EDWARD G. HEIBERT, Chairman



# SOCIAL AND CLUB NEWS OF COMMUNITY INTEREST

## Violinist Ruggiero Ricci To Solo With Symphony

World-famed violinist Ruggiero Ricci will be the featured artist in a concert to be given by the New Jersey Symphony Orchestra Friday, February 2, at Montclair High School and repeated the following evening, Saturday, February 3, at Millburn High School.

The two concerts, each beginning at 8:30 p.m., comprise the second portion of the Symphony's 1967-1968 "Suburban Concert Series".

Ricci's solo offering will be Edvard Lalo's highly intricate, difficult "Symphonie Espagnole", Opus 21. The Symphony Orchestra also will play Mozart's Overture "The Abduction from the Seraglio" and "Sacre du Printemps" (Rite of Spring) by Stravinsky.

Ricci's rise to fame began in 1929 when he made his New York City debut. He wore his hair shoulder-length, was dressed in a "Little Lord Fauntleroy" suit and played the Mendelssohn Concerto on an undersize fiddle.

The applause was thunderous, and Albert Einstein, who was in the audience, called the youngster a "genius".

Thirty-five years later, in 1964, a crew-cut Ricci stalked onto the stage of Philharmonic Hall wearing a white tie and tails and, on his 1734 Guarnerius, played the Mendelssohn Concerto for about the 300th time.

**Electrifying Talent**

The little boy that Einstein praised so highly had become one of the all-time great violinists, with an electrifying talent and a decided flair for the unusual.

In the 1964 series of four concerts at Philharmonic Hall, Ricci gave masterful interpretations of no less than 15 of the greatest works ever written for violin and orchestra.

Ruggiero Ricci was born in San Francisco, the second of seven children in a musical family. He began violin study at age five with his father and only a year later became a pupil of the great teacher

## Royal Philharmonic To Play at Montclair

The Royal Philharmonic Orchestra of London, conducted by Charles Groves, which will be presented on the concert stage by Unity Institute on Sunday afternoon at 2:15 on January 21 at the Montclair High School celebrated its 21st birthday in 1967 to global acclaim as one of the world's greatest symphony orchestras.

Founded in 1946 by the late Sir Thomas Beecham, the Royal Philharmonic is widely acknowledged as the crowning achievement in the long and distinguished career of that dominating figure in 20th Century British music. It was the last and most important of the great orchestral organizations established by Sir Thomas, and comprised the ultra-elite of British orchestral players of the day, many of whom are still active with the orchestra today.

The Royal Philharmonic Orchestra as the orchestra is known, has gained an enthusiastic following all over the world for its outstanding recordings under such famous conductors as Sir Thomas, the late Sir Malcolm Sargent, and others. It has undertaken successful tours to many parts of the world, including two previous visits to the United States, in 1950 and 1963, as well as schedules throughout the European continent and the Soviet Union.

magnificent recording of Vivaldi's "The Seasons" in which he plays four different Stradivarius violins (one for each concerto) and he is accompanied by a string orchestra composed entirely of Stradivarius instruments.

He will display the virtuosity that won him that acclaim in the February concerts with the New Jersey Symphony Orchestra.

The third, and final pair of concerts in the "Suburban Series" will be given March 8 at Montclair and March 9 in Millburn, and will consist of an all-request program chosen by the Symphony's regular subscribers.

The Symphony also has one concert remaining this season in its Newark Series, a performance March 23 at Symphony Hall, of Beethoven's Ninth (Choral) Symphony, with the combined choruses of the New Jersey Symphony and Seton Hall University.

Tickets for the Suburban concerts, as well as for the concert at Symphony Hall in Newark, may be obtained from the Symphony offices at 1020 Broad Street, Newark.



**REALTORS CELEBRATE** Members of the Board of Realtors at Bloomfield, Glen Ridge, Nutley and Belleville and their wives, dined and danced at their annual Christmas dinner-dance and installation of officers at the Manor, West Orange. New Officers include Eugene Reilly of Belleville, president; William Johnson, Horace Knox, George Pifer and Lionel Bal, vice-president; Russel Masters, secretary; William Maddams, treasurer and Albert G. Fiore, executive committee man at large. Mr. Fiore was chairman of the dinner-dance and honored guest was Mrs. A. Campbell, president of the State Board of Realtors.

## The Stork Club

**Suzanne R. Ruglio**  
A first child, a daughter, Suzanne Rae, was born to Mr. and Mrs. Alfred Ruglio of 90 Frederick St., Dec. 17 at Columbus Hospital. Birth weight was 8 lbs., 4 ozs.

Mrs. Ruglio is the former Rae Pipitone.

**Toni DeCroce**  
A third child, a daughter, Toni, was born to Mr. and Mrs. Anthony DeCroce of 365 Union Avenue on Dec. 19 at Columbus Hospital. Birth weight was 7 pounds, 2 oz. She joins Patricia 4, and Denise 2.

Mrs. DeCroce is the former Anne Gallo, daughter of Mr.

and Mrs. Pat Gallo of Belleville. Mr. DeCroce, son of Mr. and Mrs. Philip DeCroce of Newark is with the Newark Post Office.

**Paula A. Rosa**  
A second child, a daughter, Paula Ann, was born to Mr. and Mrs. Angelo Rosa of 129 Beech St., on Dec. 16 at Clara Maass Memorial Hospital. Birth weight was 6 pounds, 4 ounces. She joins Jamie Marie, 2½.

Mrs. Rosa is the former Mary Accordino, daughter of Mrs. Jean Accordino of Newark. Mr. Rosa is the son of Mr. and Mrs. Samuel Rosa

**Frank B. LaMura**  
A second child, a son, Frank Bruce, was born to Mr. and Mrs. Frank La Mura of 52 Mary St., on November 18, at Presbyterian Hospital. Birth weight was 6 pounds, 4 ozs. He joins a sister, Lisa, 2.

Mrs. La Mura is the former Judy Taylor, daughter of Mr. and Mrs. Ted Taylor. Mr. La Mura is the son of Mr. and Mrs. Bruce La Mura of Belleville.

**Daniel J. Passarella**  
A second child, a son, Daniel Joseph, was born to Mr. and Mrs. Anthony L. Passarella of 6 Reservoir Place, Belle-

ville, December 28 at Clara Maass Memorial Hospital. Birthweight was 8 lbs., 1 ounce. He joins Anthony Michael, 3.

Mrs. Passarella is the former Caroline Videtti, daughter of Mr. and Mrs. J. Videtti of Jersey City. Mr. Passarella, son of Mr. and Mrs. D. Passarella of 128 Forest Street Belleville, is a Department Manager with Channel Lumber.

**Lisa M. Borgo**  
A fourth child, a daughter, Lisa Marie, was born to Mr. and Mrs. Ronald Borgo, of 51 Van Rye Place on December 29 at Clara Maass Memorial Hospital. Birth weight was 8 pounds. She joins Denise, 15, Ronnie, 12 and Danny, 6.

Mrs. Borgo is the former Ruth Ross, daughter of Mrs. Josephine Ross of Irvington.

**Kathleen L. Caron**  
A second child, a daughter, Kathleen Lois, was born to Mr. and Mrs. John J. Caron of 27 Church Terrace on December 31 at St. Mary's Hospital, Orange. Birth weight was 6 pounds, 7 ozs. She joins Tracy, 22 months.

**Maria Picari**  
A third child, a daughter, Maria, was born to Mr. and Mrs. Marty Picari of 18 Cedar Hill Avenue on Jan. 1 at Columbus Hospital, Newark. Birth weight was 6 lbs., 6 ozs. She joins Denise, 7, and Lisa, 5.

JANUARY FASHION CLEARANCE

Save on Famous Names

Drastic Reductions

Jonathan Logan

Charlie's Girls

Bobbie Brooks

Ami Girl

Michael A.

Mr. Thomson

Barclay House

Emory

Exquisite Form

Dresses

Suits

Slack Suits

Slacks

Tops & Shells

Skirts

Sweaters

Girdles & Bras

Win a FREE GIRDLE

An Exquisite Form Girdle given away each week. Just come in and register — nothing to buy. See our entire Exquisite Form line.

Star

fashions

194 Washington Avenue  
Belleville  
(near Rutgers St. next to Allstate)

JANUARY BARGAIN DAYS

Thurs.-Fri.-Sat.  
Jan. 11-12-13

Grants

KNOWN FOR VALUES

Now, save an extra 62c per sheet over Grants everyday low prices!

Grants-own Grant Maid® white percale sheets

\$1.77

Sale

72 x 108" flat or twin fitted

REG. \$2.49

It's an important saving in anybody's sale...and in this one it brings our sheets down to pennies above wholesale cost. They're famous-mill make, 186-count combed cotton, lab tested for wear. Fitted sheets are Sanforized®, elasticized.

81 x 108" flat, or double fitted—REG. \$2.69 Sale \$1.97  
42 x 38" percale pillow cases—REG. 2 for \$1.39 Sale 2 for 97c

Grants

KNOWN FOR VALUES

at the Belleville Shopping Plaza

345 FRANKLIN AVE., BELLEVILLE

Open Daily till 8:45

Saturdays till 5:45

a sale blossoms...

WITH

WINTER COATS SUITS DRESSES SPORTSWEAR

20 TO 50% OFF

Seibel's

NEWARK'S OLDEST AND LARGEST WOMEN'S SPECIALTY SHOP

68 BROADWAY • 482-0111

• FREE PARKING • FREE ALTERATION

OPEN MONDAY, WEDNESDAY AND FRIDAY TIL 9 P.M. • USE OUR 90-DAY—NO INTEREST CHARGE PLAN



# WEDDINGS AND ENGAGEMENTS IN SOCIAL SPOTLIGHT

## New Engagement Rings



MISS HELENE SHLISSEL  
**Helene Shlissel, Arthur Zevator Are Affianced**

Mr. and Mrs. Joseph Shlissel of 129 Beech St. announce the engagement of their daughter, Helene May to Arthur Zevator, son of Mr. and Mrs. George Zevator of Passaic.

Miss Shlissel, a graduate of Belleville High School, is a senior at Monmouth College majoring in elementary education. She is president of Nu Theta Chi, a social service sorority on campus.

Mr. Zevator, an alumnus of Belleville High School and Rutgers University College, is with Popular Ready Order Division of Popular Merchandise Company, Passaic. While at Rutgers, he was a member of the varsity crew team and is the holder of the Frank Cahill Memorial Rowing Trophy.

An August wedding is planned.

## College Student In Washington

Miss Linda Lupo, daughter of Mr. and Mrs. James Lupo, 36 Meacham Street, Belleville, N.J., is one of more than 700 students from Keuka College, Keuka Park, N.Y., participating in the college's yearly fall field period.

Miss Lupo is currently working in the office of Congressman Samuel Stratton, in Washington, D.C. She is a sophomore at Keuka.

## Miss Stucka Volunteers To Help Restore Building

Marge Stucka, daughter of Mr. and Mrs. M. C. Stucka of 75 Tappan Avenue, Belleville, is among a group of students who have volunteered to help in the remodeling of the Temporary Union Building (TUB) at Montclair State College.

TUB is not a new building—far from it. It is one of four "temporary" annexes originally built to accommodate the influx of students after World War II. However, enrollments continued to expand, and it has been in full use ever since, housing first biology labs and classes and more recently studio art classes.

For its new role, TUB is given a complete face-lifting in a college-wide effort involving individual students and such campus groups as the War Memorial Board, Faculty Student Cooperative, and Student Government Association. Plans for remodeling were drawn by Ron Szabo, a senior industrial education major from Elberon. Heavy work has been done by the maintenance department, and all the lighter work, including painting, is being taken care of by student volunteers. The equipment and furnishings consist largely of cast-offs from Life Hall lounges.

Often tragedy of old age is found in the stubborn refusal of modern business to give an old man a chance to work.

**who SAVE MORE!!**

on your DRYCLEANING BILLS!

NO WORK ON YOUR PART

You Bring 'em, We'll clean & hang 'em!

NO PRESSING NECESSARY!

**1 HOUR SERVICE**

Full 8 lbs. \$2.00 — SAVE 80%

Car Coats Raincoats Wools Top Coats

Jackets Skirts Jumpers Dresses

Knits Slacks Sweaters

**NORGE** LAUNDRY & CLEANING VILLAGE

165 FRANKLIN AVE. NUTLEY

Open 8:30 a.m.-10 p.m. Sat. & Sun. til 6:00

## St. Mary Rosary Society Plans Fur Fashion Show

Daring fur combinations and stunning new designs will be seen at a fur fashion show to be sponsored by St. Mary's Rosary Society at their annual Dessert Card Party in St. Mary's Church Lower Hall January 25 at 8 p.m.

All women who love the elegance and romance of furs and the fascination of the new fun furs are invited to see one of the world's largest and most stunning collections of new fur coats, capes, stoles and accessories from the Flemington Fur Company.

Asked about plans for the show, Mrs. John DeKenipp, president extended special praise to Mrs. Albert L. Gaydos, general chairman and her committee. "They've done

such a marvelous job that this show is going to be one of the most exciting events we've ever sponsored.

Mrs. Eugene Fedorczyk, decoration chairman, has many plans to reflect the theme of the show "Frosted Elegance."

"And, of course," Mrs. DeKenipp added "we're very enthusiastic about the lovely furs the Flemington Fur Company is showing. They were so helpful to us—invited the committee down to the plant in Flemington for a tour and a preview showing of the furs."

Fashion commentary for the show will be given by a fashion coordinator from the Flemington Fur Co. while the furs will be modeled by ladies of the society.

## What's News In Fashion For New Spring Season?

As usual this spring everyone will be buzzing around trying to discover what's new in the fashion world. Well, this year we have a lot of old stand-bys and some old things made new.

Old is the hemline. Old hat to us, anyway. It's still hovering just above the kneecap. A few will succumb to the drastic midri or mid-calf length, but these will be few and far between. That hem drop is a little too drastic for most of us to take right now.

Old also are the capes. Capes have had spotty popularity for several years now and '68 brings them on stronger. Shirtwaist dresses are re-appearing. They come back

each spring and now look fresher and crisper in delicate pastel shades.

New are waistlines. Yes, they are more numerous this year than they have been since the shift came in. You'll notice waistlines on dresses and belts on coats and suits. Even if the garment is cut without a waistline, it has the illusion of one!

Collars on dresses, coats and suits are high and prominent. One of the very popular ones is called the "Mao" collar. It is a variation of the standard mandarin collar.

Colors are pastel, light and feminine. And stockings, yes, they're still colored. Light colored stockings to complement the pastel dresses take the place of some of the very heavy textured one so popular this past year.

Brown is the choice this year if you are looking for a basic color. The designers see it as fresh and new when teamed with sparkling white.

## Seven Area Industries Employ 100 FDU Students

Seven area industries have more than one hundred employees each who are attending Evening Division undergraduate or graduate classes of Fairleigh Dickinson University this year, according to the 1967-68 Report to Business and Industry recently issued by Dr. John Vaughan, vice president for Development at the University.

Dr. Iversen reported that two previous Saturday open houses in November and December were so well attended another has been scheduled for January 20.

In addition, open houses will be held each Thursday in January and February from 2 to 4 p.m. to give high school students and their parents an opportunity to visit the Union College campus.

## NEIGHBORHOOD NEWS

### HELEN MORRIS 667-1017

#### Kissin' Cousins

A dozen cousins and their spouses, all from Nutley or Belleville, had their Christmas party this year at the Club Diana. At this particular affair, the wives treat the husbands. The way the women raise the money, is to have monthly meetings throughout the year to exchange family tid-bits and collect dues. With 28 youngsters between them, there is always plenty of news to catch up on.

The "cousins' club" is made up of the following: Mildred and James Cataldo, Betty and Mike Rosamilia, Faye and Pete Malato, Stella and Vic Pasquariello, Jeanne and Joe Fornabotto, Rita and Pete Neri, Ethel and Paul Martine, Rita and Marty Malato, Mary and Pete Rossi, Chara and Tony Rovelli, Ruth and Joe Marino and last but not least Ronnie and Mike Diavino.

#### Public Thanks

Edna Deighan of 43 DeWitt Avenue wants to take the time to make a public thank-you to the Belleville Fire Department and the Belleville Police Dept. for their wonderful aid and cooperation during a recent emergency.

**W.T. Hart JEWELER**

Established 40 Years

392 WASHINGTON AVE. BELLEVILLE

(near Post Office) 751-0245

**Need a Lift?**

BUY YOURSELF A NEW PAIR OF Pierced Earrings

What a beautiful selection—best in town. Buttons, drops, clusters... you name—Hart has it.

**H OPEN MON. & FRI. TILL 1 H**

Her husband John suffered a collapsed lung and due to quick actions of Irving Holly, John Donnelly, Joseph Limin and Jim Salmon, severe complications were avoided.

It'll be another two or three weeks before John can return to the daily grind, but he's getting there little by little as each day goes on. Both John and Edna have been lifetime residents of Belleville and now they know why for sure.

#### Shopping Cart Dilemma

Joseph Pappalardo of 600 Union Avenue has some definite feelings on the shopping cart problem so often found in our local supermarkets. Joe, who is a second year student at Union College, expects to receive his A.A. degree this June. To help meet extra expenses he works at the Belleville Shop-Rite in the appetizing department. Joe feels that too many people take shopping carts with them, meaning to bring them back the next trip to the store, and then somehow or other forget to do so.

And too many people don't realize the money factor involved. Each lost or taken cart must be replaced and the money to buy the carts comes from higher price labels on the products sold within the store. And each cart costs \$30.00 to replace. That's why Joe definitely feels that with each shopping cart saved, the consumer eventually saves money. Let's all be a little more careful with these carts and prove him right.

#### Wedding Day

Linda Hoover and Linda Coeyman have been close friends for the past few years. They met in Rainbow Girls over three years ago. So it came as no real surprise when Linda Coeyman asked her good friend Linda Hoover to be maid of honor for her wedding. Linda accepted with joy and thus it was that this December 27, Linda acted as maid of honor for Linda Coeyman and Private John R. Scutles Jr. According to Linda H. it was a small but lovely wedding.

**WIGS**

The World's Finest

**Mona Lisa**

137 Wash. Ave. Belleville

(Next to Biondi Bridals)

759-1491 COMPLETE WIG STYLING SERVICE

**Claire's Sale Is The 'Real Thing'**

**1/2 OFF Sale**

Includes All our Famous Brands!

Toddlers to Size 14 • ENTIRE STOCK

**DRESSES 1/2 Price!**

**BARGAIN TABLE**

VALUES TO \$8 **\$1** none higher

girls, 4 to 14 **SLACKS and SLACK SETS 1/2 Price!**

Infants Boys, Girls **Coats, Jackets SNOW SUITS 20% OFF!**

BOYS POLOS & SHIRTS ROBES-PAJAMAS-GOWNS **1/2 Price!**

The Cutest Things Are At Claire's

**Claire's** CHILDREN'S SHOP

141 Washington Avenue, Belleville Center

(next to Tannen's Shoes) Open-Friday Nights

**NEWARK SLIP CO.**

THE STORES THAT SAVE YOU MORE!

BOYS' CORDUROY PILE LINED JACKETS 2.99 7.99 Value

MEN'S ZIPPERED FRONT HOODED SWEAT SHIRTS 1.37 REG. 2.99

COUPON DAYS

Save 71c off Our Reg. Low Price GIRLS PAROCHIAL BLOUSE 88c

Save 19c off Our Reg. Low Price MEN'S SATIN STRIPE Handkerchiefs 69c

Save 60c off Our Reg. Low Price 3-PC. ALUMINUM SAUCE PAN SET 59c

COUPON DAYS

Save 30c off Our Reg. Low Price LADIES' KNIT TURTLE NECK TOPS 47c

COUPON DAYS

Save 12c off Our Reg. Low Price BOWL BRUSH 17c





DANA NAPPI



JON BRANIGAN



BARRY PEIRCE



JOHN ZOPPI



BOB BONAFANTE



JESSE TOWNS



ALAN D'AGOSTINO



JIM WILLE



DICK BERESFORD



JOHN PERAINO



VINNIE GODLESKI



NEIL SWARTZ



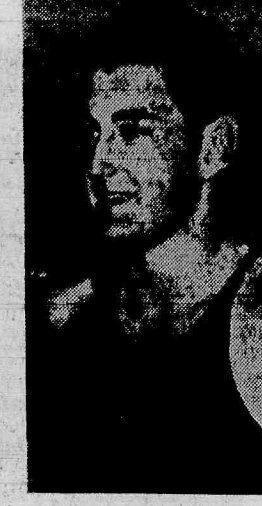
HARRY MAROULAKAS



JACK WILLE



BILL GINGERELLI



RICH JONES

## Belleville Matmen Play Kearny At 7:30 Home Game Tonight

Belleville matmen this evening play Kearny in a home game at 7:30 this evening.

The third match of the year, the Belboys took on East Paterson. After taking an early lead, the middle weight class proved the undoing of the localites.

Robert Rebolli gave the Belleville team a good start with a 7-2 decision over Portelli, easily outclassing his opponent by riding him most of the way. The next weight class John Peraino lost a close one to Martinelli on riding time — almost even 9-6.

John Zoppi then put Belleville on the lead again by nearly pinning his man twice in second period and then succeeding in the third — making score now 8-3 Belleville. Next Dana Nappi closed fast on his opponents early lead and bringing about a tie — each team earning two points.

These following four matches where East Patterson collected eighteen points. They pinned Paul Smith, Harry Maroulakas, and Danny Stefanili. East Paterson's top wrestler Frank Ciolino had his hands full with Mike Ventura, who managed to avoid a pin, losing two points.

(Continued On Page 12)

Wall Groupings  
Decorative Items  
Antique Jewelry  
Furniture &  
Bric-A-Brac  
Antiques & Interiors  
by Mr. Ronald  
33 Ridge Rd., No. Arlington  
998-7902

**COUGAR SALE!** NEW & USED  
FROM THE **NO. 1 DEALER**  
IN SAVINGS 484-4300  
420 BLOOMFIELD AVE., NEWARK  
**NEWARK** MERCURY LINCOLN

ZSA ZSA SAYS  
TAKE YOUR CAR TO THE WORLD'S  
LARGEST TRANSMISSION  
SPECIALISTS  
**AAMCO**  
TRANSMISSIONS  
**FREE**  
Multi Check - Towing - Roadtest  
Available at 400 Aamco Centers Coast to Coast  
**AAMCO LIFETIME GUARANTEE**  
Free parts, labor on all AAMCO lifetime rebuilt transmissions  
as long as you own your car. Each service is annually for \$13.75.  
No other guarantee like this.  
"ONLY AAMCO HAS IT!"  
• 1 DAY SERVICE  
• BUDGET TERMS  
OVER 400 CENTERS COAST TO COAST  
OPEN DAILY 7 A.M. to 7 P.M.  
SATURDAYS 7 A.M. to 1 P.M.  
126 Washington Ave., Nutley  
661-3030  
In Emergency Call: Joe Barone, Mgr. 661-1615

**HAIRPIECES  
WHOLESALE  
TO PUBLIC!**  
**WIGS** by GIOVANNI  
WIGLETS \$9.50  
FALLS 29.50  
EYE LASHES 1.50  
100% HUMAN HAIR IMPORTED  
**\$AVE** FROM IMPORTER TO YOU!  
"NO MIDDLE MAN"  
**FREE** EYE LASHES  
WITH EACH PURCHASE  
IMPORTED WIGS Distributors  
330 Glenwood Avenue  
(one flight up above Broad Bakery)  
Bloomfield Center  
743-0702  
HAIR STYLIST IN SHOWROOM

**GIGANTIC January CLEARANCE SALE**  
**SAVE UP TO 75% OF ORIGINAL PRICE!**  
**DRESSES** VALUES FROM 15.00 to 35.00  
**5<sup>99</sup> TO 12<sup>99</sup>** NONE HIGHER  
**SLACK & SKIRT SETS** VALUES FROM 25.00 to 55.00  
**9<sup>99</sup> TO 18<sup>99</sup>** NONE HIGHER  
Styles In All Fabrics & Colors  
**ALL FAMOUS MAKES**  
• Jonathan Logan • Bobby Brooks  
• R. C. Quinn • Moderno  
• Symphony, Etc.  
**PRICES SLASHED**  
**PAY-LESS CITY**  
CASH BUYERS OF BRAND-NAME MERCHANDISE  
231 B FRANKLIN AVE.  
NUTLEY CENTER  
**SPORTSWEAR SALE**  
100% DOUBLE KNIT WOOL  
**SLACKS** Reg. 14.99 **7.99** NONE HIGHER  
Bobby Brooks & Billy Jo  
**SLACKS** Reg. 12.99 **7.99**  
**SKIRTS & Sweaters** REG. TO 20.00 **6.99 & 8.99**  
**STRETCH SLACKS** Reg. 8.99 to 12.99 **4<sup>99</sup> & 5<sup>99</sup>** NONE HIGHER  
**FAMOUS MAKE TOPS & BLOUSES** Values from 8.99 to 13.99 **2.99 to 5.99** NONE HIGHER  
**ALL FAMOUS MAKES**  
ACT III BOBBY BROOKS  
FAIRFIELD BILLY JO  
ETC.



ADVERTISEMENT

BECK'S COLUMN



By MAX BECK

Many people who come to our store to inquire about a color TV set ask us: "which one is the best?" There is only a qualified answer to this question.

One of the largest manufacturers of color TV sets recently built a new factory in a territory where there is no supply of skilled labor. It is difficult enough to iron out all the "bugs" which unavoidably occur with all the new machinery. The greatest problem though is "people." You can fix up a machine, but can you fix up people? It is very difficult, almost impossible, to change people. Everybody who is in a position where he has to do with numbers of people, like a foreman for instance, will tell you how everyone has to be treated differently. One of these men told us once: "Everybody thinks he is a prima donna, or at least they act like it." Probably the man is right.

To come back to the new factory mentioned above, they had and still have no end of trouble with these unskilled workers. As a result there are problems with the merchandise. The name of this manufacturer is so well known that most people would accept the product without question. Many did and were in for an unpleasant surprise.

Another one of the largest color TV manufacturers uses picture tubes from a new factory which they built recently. A color picture tube is an extremely difficult item to manufacture. The rate of failure was many times greater than normal.

One can not rightly say that either one of the 2 factories mentioned above has "the best" color TV, although they have "the best" names.

How then can you be sure you buy the right brand? This is easy to answer, buy from a dealer who operates his own service department. He can not afford to sell troublesome merchandise, he has to sell "the best."

Beck's Radio TV Hi-Fi  
Nutley 667-2275  
We service what we sell.



**HOLIDAY TEA**—The living room of the Clara Maass vice president, presented the students with a gift of 15 rec. Memorial School of Nursing became vibrantly alive as the ords for the stereo. Accepting the gift is Miss Linda Winters, hospital's guild feled the students at their annual tea. At the senior class president. conclusion of the afternoon, Mrs. Peter Amirata, guild

**Museum Will Remain Closed On 2 Evenings**

Currently the Newark Museum will be closed on Wednesday and Thursday evenings while maintaining its regular daily hours.

Katherine Coffey, director of the museum, said that the closing of the museum galleries to evening visitors was made necessary by a proposed cut in the museum's operating budget for 1968 requested by the city.

This action is being taken, Miss Coffey said, in an effort to adjust expenditures to the budget cuts. "However we shall maintain our regular daytime schedule and all other services as far as possible." She added that she hoped a full schedule of services and hours could be restored in the future.

Miss Coffey said it was important to reassure those enrolled in the evening adult Arts Workshop that classes would be continued in the Museum Addition Building. Since the Main Building will be closed, special access will be provided on Wednesday and Thursday evenings for students.

Museum hours are from 12 to 5:30 p.m. Monday through Saturday, and from 2 to 6 p.m. on Sunday. Admission is free at all times.

**JANUARY SALE**

**Girdles - Corselettes  
Bras**

**UP TO 1/2 OFF**

**End of Season  
Lingerie  
CLEARANCE**

*Lady Fair*

**LINGERIE CORSETRY**  
510 FRANKLIN AVENUE NUTLEY  
(FRANKLIN THEATRE BUILDING)

Free Alterations  
Expert Fitting



AMERICAN EXPRESS CARDS

The best driver is the one who doesn't have wrecks even when the other fellow is wrong.

Snow on a shovel is not as light as it may seem by looking at it on the ground your Heart Association says, and middle-aged men who've grown soft can strain their hearts by over-exertion in snow-shoveling.

**TWICE-YEARLY SALE!  
2nd BIG WEEK  
at MODERN TRED!**



NATIONALLY KNOWN BRANDS

**SHOES**

- American Girl
- Naturalizer
- Pedwings
- Jumping Jacks
- Buster Browns

**\$4.99**

**to \$12.99**  
Formerly \$8.00 to \$17.00

Over 30 Years of Corrective Shoe Fitting  
Doctors' Prescriptions Carefully Filled



**MODERN TRED**

**SHOE STORE**

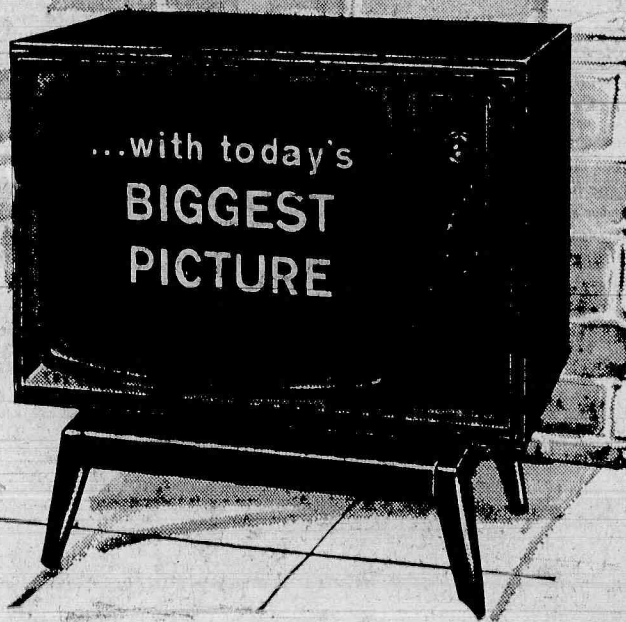
238 FRANKLIN AVENUE, NUTLEY  
Open Mon. & Fri. Evenings to 9 P.M.  
Parking in Rear Of Store

Enjoy the Convenience of this

**BEAUTIFUL Swivel CONSOLE**

**COLOR TV**

Only  
**\$479<sup>50</sup>**



With the largest-29 1/2 Sq. In. rectangular screen. Exclusive chromatone adds beauty and vivid depth to color. The quick-on feature lets pictures flash-on in seconds.

Automatic color purifier lets you move your MAGNAVOX anywhere in your home, without risk of picture impurity. Select from over 40 authentic fine furniture styles.

Beck's Own Budget Plan Available

"We Service What We Sell"

**BECK'S**

196 Franklin Ave., Nutley 667-2275

Open daily 9 to 6; Mon. & Fri. 9 to 9



**MEN'S SHOP**

NEWARK • NUTLEY

Cor. Franklin & Centre  
667-4440

Open Mon. - Fri. 'til 9 - Sat. 'til 6

Ample Parking

**JANUARY  
CLEARANCE**

NOW IN PROGRESS

**Savings  
Up to 50%**

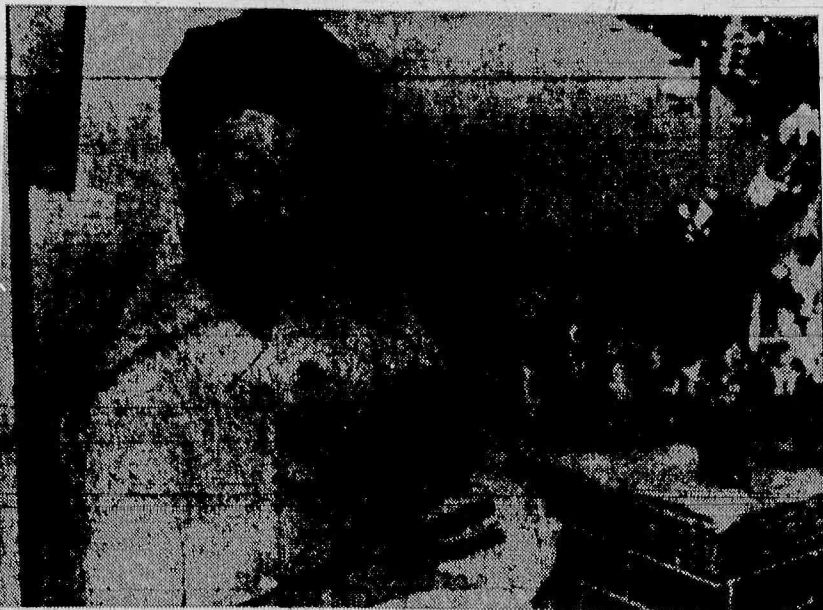


# Leontyne Price To Give Newark Oneratic Recital

Metropolitan Opera soprano Leontyne Price will sing a program of famous arias at her Moe Septee Series concert Saturday, at Symphony Hall, Newark.

The concert, which Miss Price will perform with symphony orchestra, will begin at 8:30 p.m.

The program comprises: Ch'io mi scordi di te (concert aria) by Mozart; Depuis le jour from "Louise" by Charpentier; Adieu, notre petite table from "Manon" by Massenet; Un bel di vedremo from "Madam Butterfly" by Puccini; and Salce, salce-Ave Maria from "Otello" and Ernani involami from "Ernani," both by Verdi.



A PICTURE OF happiness can be seen on the face of Mrs. Theresa Cafone as she holds her infant son, Thomas Angelo in front of the Christmas decorations on the maternity ward of Clara Maass Memorial Hospital, Belleville. Joyful about both the birth of her new

son and word that she may be going home soon, Mrs. Cafone expressed that the baby was the first son born to the Cafone family in 35 years. Her husband Thomas works as a superintendent for a Fairfield corporation.

## Essex Mayors Invited To County Budget Talks

C. Stewart Hausmann, director of the Essex County Board of Chosen Freeholders, said that mayors of all 22 municipalities in Essex had been invited to attend budget hearings to be held in Room 501 in the Essex County Hall of Records starting next Monday.

Director Hausmann said that the invitations to the may-

ors also extend to the financial officers and all the elected officials of the municipalities.

The director said that the hearings will be held starting at 9 a.m. and continuing daily through to 4 p.m. until the proposed budgets of all 57 departments of County Government are scanned.

"We are looking to the cooperation, advice, counsel and recommendations of elected officials in all the municipalities in helping to determine just what services and at what cost are necessary for the successful progress of our County."

"It is the intention of all Freeholders that these budget hearings proceed in the public view and with public help so

that elected officials of Essex County will be able to provide through county government and its agencies the maximum service at the lowest possible cost," Hausmann said.

In addition to the municipal officials who are invited to attend, Hausmann said that invitations had also been sent to members of the Essex Commission and the Citizens Budget Advisory Committee. Hausmann said the invitations also extend to all interested citizens.

The director estimated that the hearings would continue at least through Thursday following which he said that the County Treasurer's office would be able to strike an estimate of the prospective 1968 tax rate.

The 1967 gross budget last year was \$67,692,063, with the amount raised by taxation at \$55,399,880. The 1967 tax rate was \$1.02 per \$100. of assessed valuation; a rise of 6.7 points above the previous year.

**LANDOLFI**  
Home for Funerals  
N. A. Landolfi Jr.  
MANAGER  
503 Union Ave.  
Belleville  
759-7600

Ample Parking Air Conditioned

**Wadsworth**  
FUNERAL HOME  
524 UNION AVENUE  
BELLEVILLE  
James F. Desmond, Mgr.  
Plymouth 9-2879

*Every wish of the family is respected*

We hold sacred the family's trust in us. We lift the burden of detail assuring you of solace on this solemn occasion.

**KIERNAN**  
Funeral Service

AVAILABLE TO ALL REGARDLESS OF FINANCIAL CIRCUMSTANCES

Non-Sectarian

**KIERNAN**  
Funeral Home  
George F. Kiernan  
101 Union Ave.  
Belleville  
Plymouth 9-3503

**As Near as Your Phone**

Need a prescription filled? An emergency first aid preparation? Or just an everyday health or beauty aid? Give us a call—we're happy to deliver in good weather or bad.

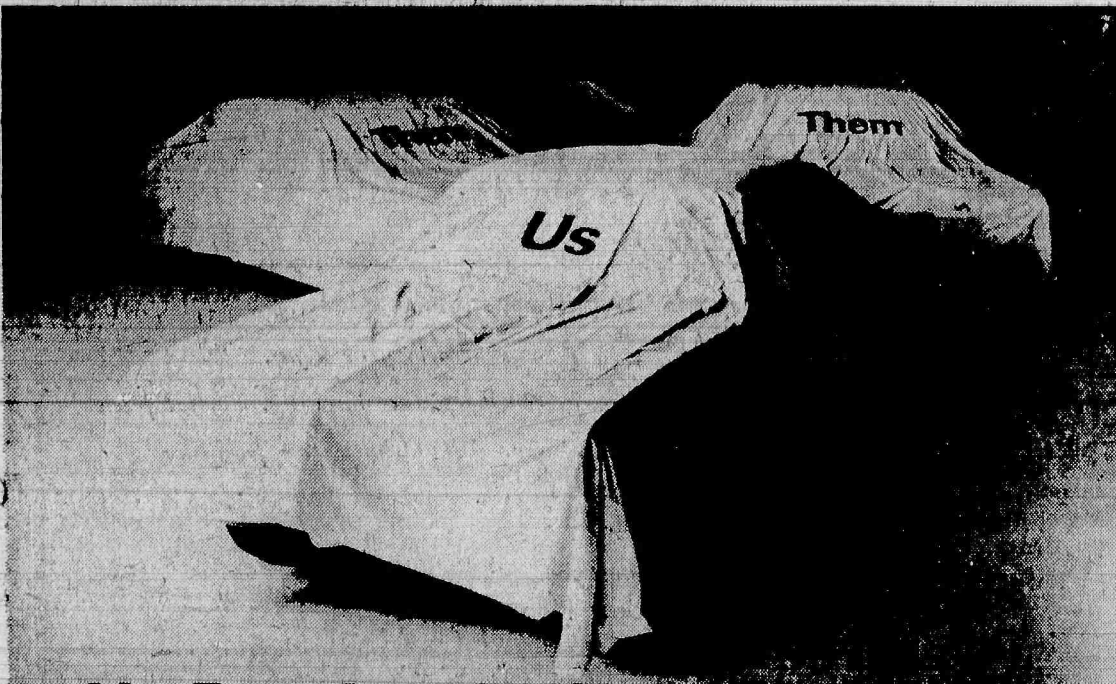
Your doctor knows us... your doctor trusts us

**Rossmore Pharmacy**  
328 Washington Ave., Belleville  
759-1956  
Proprietor: Vincent Cosserelli, D.S.R.P.

*To serve you with Dignity*

At any hour of the day or night, we respond instantly to your call, ready to assume full responsibility for all of the many details involved in arranging a dignified funeral.

**S. W. Brown & Son**  
FUNERAL HOME  
Serving All Faiths  
267 Centre St., Nutley  
Ample Parking  
NO 7-0875



**Us Pontiac dealers are having a comparison sale.**



It's Us (Bonneville, Catalina, Grand Prix, Firebirds, Le Mans, GTO, Tempest) vs Them (all other cars)

**ALLEN PONTIAC, Inc.** 645 WASHINGTON AVE. BELLEVILLE, N.J.

You'll love the weather at...



# TONYTOWNE

IT'S SNOWING SAVINGS!

# 1/2 PRICE

BUY ONE ITEM LISTED BELOW

# Sale

AND GET THE 2nd AT 1/2 PRICE

- |  |   |
|--|---|
| ★ DRESSES<br>Sale 4.98 - 2nd One - 2.49            | ★ 3 PC. SLAX SET<br>Sale 18.75-2nd One - 9.37   |
| ★ WOOL SLAX<br>Sale 5.98 - 2nd One - 2.99          | ★ SWEATERS<br>Sale 2.98 - 2nd One - 1.49        |
| ★ STRETCH SLAX<br>Sale 4.98 - 2nd One - 2.49       | ★ DRESS SWEATERS<br>Sale 4.98 - 2nd One - 2.49  |
| ★ Corduroy Wranglers<br>Sale 5.98 - 2nd One - 2.99 | ★ SWEATER DRESSES<br>Sale 5.98 - 2nd One - 2.99 |

★ HALF SIZE DRESSES  
Sale 10.95 - 2nd One - 5.47

PLUS HUNDREDS OF OTHER SENSATIONAL SAVINGS ON 1/2 PRICE ITEMS

OPEN 6 DAYS A WEEK  
Evenings to 7 - Friday to 9 P.M.

# TONYTOWNE

239 Centre Street  
(Cor. Passaic)  
Nutley



# First Clara Maass Baby of New Year Arrives



GLEN URBAN LEEDER was the first baby born at Clara Maass Memorial Hospital in 1968. Coincidentally, the hospital too was celebrating something important — its 100th anniversary. To commemorate the occasion, Albin H. Oberg, the hospital executive director, presented the new arrival

with a US Savings Bond for \$100 as a gift from the Board of Trustees. Esther Leeder, his mother, his father Robert and sister and brothers, Susan, Paul and Drew, live at 206 Belgrove Drive, Kearny.

1968, the Centennial Year of Clara Maass Memorial Hospital, got off to a flying start at 12:55 a.m. on January 1, 1968, when Glenn Urban Leeder first saw the light of day in the hospital's Maternity Suite. He is the son of Mr. and Mrs. Robert J. Leeder of 206 Belgrove Drive, Kearny.

The hospital, which was founded in 1868, will be celebrating a century of dedicated service to the community during 1968 with numerous events commemorating its 100th Anniversary. The first such event was the awarding of a \$100 U. S. Savings Bond to the first baby born in the New Year by the Board of Trustees.

Glenn Urban Leeder, the

first baby born in 1968, is 8 pounds, 4 ounces. He has a sister, Susan, and two brothers, Paul and Drew. His father, Robert, is a Radio Announcer for Station WJRZ.

Other babies born at Clara Maass Hospital on January first were Anthony Russo to Mr. and Mrs. Joseph Russo of 40 Ridge Road, North Arlington, and Brian Bradford to Mr. and Mrs. George Bradford of 659 Passaic Avenue,

Remington on Board In other affairs at Clara Maass, Archie C. Barbata, president of the Clara Maass Memorial Hospital Board of Trustees, announced the appointment of William G. Remington to the hospital board.

Remington is president of Peerless Tube Company, Locust Avenue, Bloomfield, a post he has held since 1966.

In addition to becoming a member of the Clara Maass

Memorial Hospital Board of Trustees, Remington is a Director of the N. J. Taxpayers Association, Harvey Cedars Bible Conference, Christian Businessman's Committee International and the Leslie Co. He is vice president of Metal Tube Packaging Council and a member of the Seaview Country Club, Absecon.

The Remingtons reside in Upper Montclair and have 3 children.

## Keep Out of Nutley, Belleville Man Told

A Belleville man who assaulted his wife in Nutley has been given a suspended 30-day jail sentence and fined \$25 by Judge Edwin J. C. Joerg.

Fined was Eugene McCann, who would not give his specific address in Belleville.

He pleaded guilty to assaulting his wife on the night of November 28. McCann was also reprimanded by Judge Joerg and told to stay away from his wife's home here.

Keep your car in **GOOD SHAPE**

We specialize in:

- Standard and Automatic Transmissions
- Brakes Re-Lined
- Expert Tune-ups
- Front Ends Aligned
- Ball Joints

All Work Guar. Free Estimates 759-5799 or 482-3247

**Nicky's**  
AUTO REPAIR  
41 Heckel St., Belleville



"Really, lady, wouldn't it be easier to call AAA?"

We think so. Ask the 11 million Americans who belong to AAA, world's biggest Auto Club. Being an AAA member costs only six cents a day. Seriously. Emergency road service, travel help, and much more. Call or write your local AAA office:

Newark  
32 Park Place  
622-6655

Westfield  
6 Elm Street  
233-6402

Florham Park  
One Hanover Road  
377-7206

## Breakfast Set For Sunday At Menorah

Temple Menorah Brotherhood, Bloomfield, will hold a monthly breakfast meeting this Sunday at 10 a.m. in the Malick-Shuster Hall at the Temple. The program committee, headed by Dr. Sidney Boyer, Clifton, chairman, is arranging a surprising and interesting program for the breakfast meeting. Samuel S. Goldsticker, Brotherhood president, will conduct a short meeting prior to the program. A representative group from the Temple Menorah Brotherhood, headed by the president, will attend the annual "Chautauqua" meeting under the auspices of the Jewish Chautauqua Society. It will be held at Temple Shalom Tefkilo, East Orange, on January 15, at 8 p.m.

The Jewish Chautauqua, organized in 1893, and sponsored by the National Federation of Temple Brotherhood is the brotherhoods' major educational project for improved Jewish-Christian relations. The Jewish Chautauqua Society sends rabbis to colleges and summer church camps

from coast to coast to tell Christian neighbors about the moral and religious values of the Hebrew peoples.

ITT Assistant Comptroller

Appointment of Thomas F. Krauter as assistant comptroller of International Telephone and Telegraph Corporation was announced by Herbert C. Knortz, senior vice president and comptroller.

Krauter, who joined the ITT System in 1958, was formerly director of financial controls of ITT's Technical Industrial Products group as well as the ITT semiconductors division. Previously he served as executive vice president of ITT Nesbitt, and director of North American Staff at New York headquarters.

## Low cost auto loans

• Fast Action • 36 months to repay  
• Life Insurance Available

Drop in at any office or call 748-3000

**NATIONAL NEWARK & ESSEX BANK**

31 Offices Throughout Essex County  
Member Federal Deposit Insurance Corporation



## Young Squire, Ltd. CLEARANCE

ON **WINTER APPAREL**  
20% to 50% OFF  
ON **MEN'S and BOY'S**

- Outerwear
- Zip-Lined Raincoats
- Ski Jackets • Sweaters
- Sport Shirts
- Gloves • Mufflers
- Slipper Sox
- Sports Coats • Vests • Slacks

Also Men's Handmade Ski Sweaters

• ETCETERA •

**Young Squire, Ltd.**

1059 BROAD ST., BLOOMFIELD  
(AT WATCHUNG AVENUE)

EDISON 8-7998

Open Monday & Friday 'til 9



Paul Monaco

**CENTRAL CADILLAC**  
Headquarters for  
Finest Used Cars

Thanks to Central Cadillac's record-breaking sales of the new Cadillacs, right now you can choose from New Jersey's largest selection of late-model Cadillacs and other fine used cars.

Every car is expertly reconditioned and fully guaranteed by Central Cadillac. See Paul Monaco, Central Cadillac Sales Representative, for the used car buy of your life!

**Central** selling  
CADILLAC, INC.  
"America's Leading Cadillac Dealer"  
360 Central Ave., Newark  
MA 4-2264

## TRUCKLOAD SALE!

### IN Wood PANELING

- Blueberry Birch
- Espresso Elm
- Tawny Birch
- Ivy Birch
- Raspberry Birch
- Mushroom Elm
- Bronze Birch
- Moss Elm

### PRE-HUNG DOORS

Left or right hand, pre-hung doors with ready-installed hinges, quick set lock set, casing and fitting. All 80" high with varying widths of 24-28-30-32 and 36"

Values to **17.88**  
See a complete line of doors

- Birch
- Lodgepole
- Mahogany

AT GREAT DISCOUNTS

We Are Official Headquarters for **ARMSTRONG CEILING and FLOOR TILES**

SEE OUR COMPLETE VARIETY OF DOOR & SHUTTERS

Coming! Coming! WATCH for **WASHINGTON'S BIRTHDAY SALE**

## VIOLA BROS.

180 WASHINGTON AVE., NUTLEY

"Everything to Modernize Your Home and Property"

NO 7-7000

USE OUR HOMEOWNERS E-Z CREDIT PLAN





# 200-Year-Old Abram Speer House Named Historical Shrine

By PAT FANELLI

"I bought this house to live in, not as a historical shrine, but we could not be more pleased."

These are the feelings of Mr. and Mrs. Richard Tench of 149 Church Street, who through the efforts of Diana Kozlupa of 4 Hunkele Street, Belleville, have had their home declared an historical site. A marker, denoting this will be erected sometime in early January.

The marker was unveiled at a ceremony last month at the Nutley Historical Society Building at 230 Broadway, Newark, by Jack E. Boucher, supervisor of historic sites for the New Jersey state department. Clarence Brown, president of the Nutley Historical Society, accepted the plaque.

Harry W. Chenoweth, mayor of Nutley, commented that "it was important to preserve the idea for young people that history does mean something."

The house, owned by Mr. and Mrs. Tench is over 200 years old. It was part of the dowry of Emmetche Wouters or Wouterse and was built by her father Abe, who owned a blacksmith shop at the foot of Povershon Hill which is now the intersection of Bloomfield Avenue and Centre Street. Abram Speer, who dwelled in the house until his 1834 death, was famous in the Revolutionary War. His father, John, is said to have killed a spy across the Passaic River from his post atop a church steeple. He was given the spy's watch and it has become a family heirloom.

Returning from the war with the determination to become a great landowner, Speer acquired over one-fourth of Nutley, part of which were lands confiscated from the town's one Tory. He sold the holdings to John M. Vreeland. Vreeland lived in the house which is now designated as the Nutley Women's Club.

## Freed His Slave

Abram's land stretched from the Passaic River to Pine Brook. The owner of slaves, Abram freed his last remaining slave, "Old Nancy," and had a house constructed for her, near the main building. This structure can still be seen in pictures of the Speer House. The four daughters of Speer married prominent local men: one wed a Slager, another a Jorammon; the third, a Pike and the fourth, Sarah, married Daniel Tuers. Because the property remained with this daughter, it was known as the Tuers Homestead until 1929.

Since 1942 the Captain Abraham Speer estate has been owned by Mr. and Mrs. Richard Tench.

Constructed of rough sandstone, dragged up the hill from a Nutley quarry, the house has 24 inch thick walls. Pegs were

utilized instead of nails to hold the beams together, and the plaster is held together by hairs, a mark of slave labor. A large single piece of stone serves as a doorstep and the Tenches have retained as much of the original glass in the windows as possible. The original beams have been exposed by the Tenches on the first floor of the house to increase authenticity. Because the attic is part of the Speer house, while the second floor was placed in the middle when the roof was raised, the Tenches believe that the date marker which is usually placed above the door was obliterated.

## Two Carriage House

It is believed that the house was built around 1760. Five feet from the main house is the slave house built by Speer for "Old Nancy." There are two original fireplaces in the kitchen and the living room, a well over 150 feet deep, and a two story carriage house used by the Tenches as a garage. Emmetche's Speer's spinning wheel and a pewter platter brought by Hendrick Speer from Amsterdam in 1659 are part of the colonial atmosphere that the Tenches have attempted to preserve.

The article written by Miss Kozlupa and published in "The Cockpit," the New Jersey Historical Society magazine, also stresses the fact that Captain Speer was "one of Nutley's first and finest settlers, and his guard post located near the Passaic River was instrumental in preventing English raids."

Diana, who is a member of the Jerseymen of four years standing, chose the Speer house because "it looked like it had a lot of possibilities." Although she is planning to major in mathematics or physics Diana nevertheless finds that "history is a challenge."

She enjoys the adventure of being "entirely on her own, as far as finding information, because often nothing is written down, but the information has to be gotten through interviews and digging into old things."

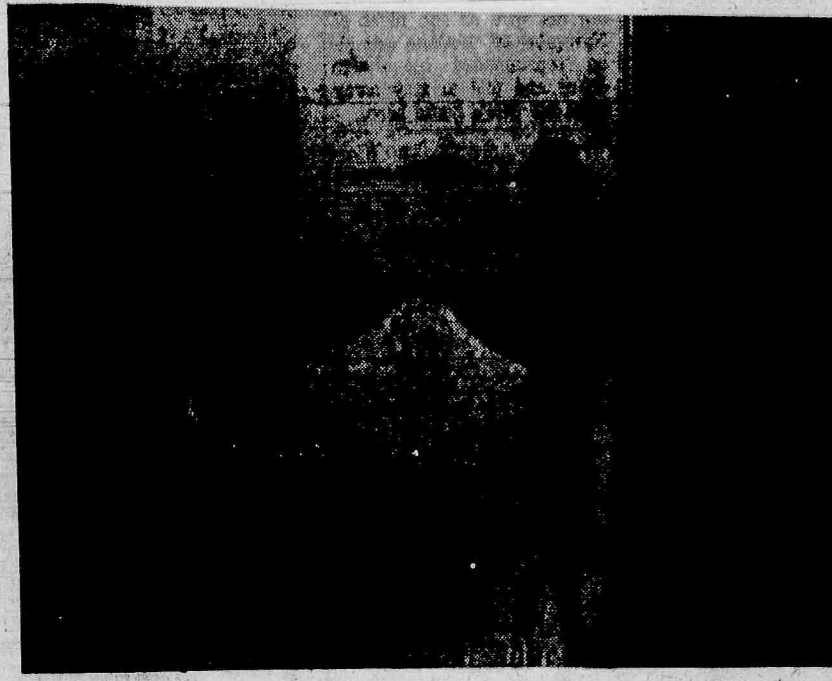
## Won Art Prizes

A collector of old books ("a lot I haven't even read yet"), Diana possesses over 1000 books. The prizes of her accumulation are a volume autographed by Mark Twain, a book of verses signed by Whitier and a book published in Ireland in 1700 on heraldry.

An honor student at Queen of Peace High School, North Arlington, Diana also is on best in fair at the state historical convention for her project on the movie industry in New Jersey. It was a scale model of the studio block house covered with tar paper, and especially significant since some of the



**HISTORICAL OCCASION** — Mr. and Mrs. Richard Tench of 149 Church Street share some comments with Diana Kozlupa. Diana researched the history of the Abram Speer house which is owned by the Tenches, and what she discovered led to it being declared a historical site. The Tenches had refused several offers to sell the house, even before they were aware of its history, because in the words of Mrs. Tench, "we just fell in love with it, when we bought it."



**SPEER SITE SELECTED** — Mayor Harry W. Chenoweth is pictured with Diana Kozlupa, whose research led to the Captain Abram Speer House being declared a historical site. The marker which was unveiled



**PRESENTATION** — Jack E. Boucher, far left, supervisor of historic sites for the N. J. state department of conservation, officially unveils and presents the Abram Speer marker to Clarence Brown, (right), who is president of the Nutley Historical Society. Diana Kozlupa of 4 Hunkele Street, Belleville, is the center of the picture. It was her defense brief that led to the designation of the Speer house as a site worthy of preservation.



**INFORMAL CONVERSATION** — From left to right: Diana Kozlupa; Queen of Peace student; Jack E. Boucher, supervisor of historic sites; and Clarence Brown, president of the Nutley Historical Society are pictured as they discuss the coming significance of the designation of the Speer House as a historical site: Boucher, who praised Diana efforts and research, thanked her for helping to preserve a part of history.

## School 5 Candidates' Night Draws Audience

(Continued From Page 1)

Mrs. Grace Worley, is a physical education teacher at Belleville High. His brother is a resident of New York state.

## Controversial Albertaine

Michael Albertaine probably produced the most controversial remark of the evening when he stated he couldn't say anything for or against the 1968-69 financial plan. "I'll have to analyze the budget first . . . and I'm a pretty good analyst."

Albertaine said he was a product of the local school system, a former school teacher and a college graduate. He has three children in local schools.

"I am interested in the children and providing them with the best curriculum and equipment. Too often children are shortchanged. I am also interested in the parents . . . the taxpayers . . . and I will seek the best education at the lowest possible cost . . . looking out for your interest and the interest of your children," Albertaine said.

## D'Ambola is a Teacher

Joseph D'Ambola, a teacher at East Side High School in Newark, announced he was qualified to serve as a board member because his college training was geared toward solving educational problems. He was graduated from Montclair State Teachers College. "The future of our children is like building a house . . . it is only as strong as its foundation." He said the quality of the education children receive determine the strength and framework of this foundation. "He said he was eager to develop work study programs for students in the district who do not plan to continue their education formally beyond high school. Such programs help develop trade skills

and he said federal and state monies are available for such projects and should be used "in a realistic manner."

## Saletta Grateful

Board president Rocco Saletta, grateful for past support from residents in the previous election said he was amazed that his three year term had sped by so quickly and was looking forward to another term. He was proud of his current position as president and for his near perfect attendance record.

He said that the board was experiencing a harmony it has never known in recent years and stated that this enviable condition was caused by meeting problems and all misunderstandings head on and correcting them. He said he had kept politics out of school board matters and would continue to do so.

Also a product of the local school system, he was graduated from Seton Hall University.

## The People's Representative

Mrs. Norma McCool, "the people's representative to the board," said she is seeking reelection to help Belleville achieve even high educational standards. She pointed out the importance of having youngsters properly trained to become adult leaders able to compete in the business world, act as competent homemakers, be prepared for college or develop a technical skill. These tools for proper development, she said, can only be had with good teachers and administrators.

Mrs. McCool, a former music instructor, has served as a comptroller and bookkeeper. She said this background has made it easier to cope with finances at budget time. She said she is able to evaluate educational needs with

## Jaycees

(Continued From Page 1)

improvement and charity, they charge our community with new life. This is their week - their cause and recognize their efforts," Smith said.

Emil Brauer, president of Belleville chapter, thanked Mayor Smith for his generous support and made a public appeal for new members.

Brauer stated that civic organizations are only as valuable as their last community project, and that if we have contributed to the growth of Belleville in any way we have attained at least one of our goals.

However, there are many new projects we would like to undertake. New members are the life blood of an organization from whom we gain new insight, enthusiasm, and new dedication for a better Belleville.

This organization is open for membership to any man between the ages of 21 and 36 who is interested in self development through community service.

## LEGAL NOTICE

**NOTICE OF PUBLIC HEARING**  
LAND USE PORTION OF THE MASTER PLAN  
TOWN OF BELLEVILLE, NEW JERSEY

The Planning Board of the Town of Belleville will hold a public hearing on Thursday, January 25, 1968, at 8:00 p.m. in the Auditorium of the High School, 100 Passaic Avenue, Belleville, New Jersey, to hear any resident of the Town and/or any other party interested in the proposed Land Use Plan portion of the Master Plan as set forth on the map entitled "Comprehensive Development Plan". Said map, duly identified by the signatures of the Chairman and Secretary of the Planning Board will be on public display in the office of the Town Clerk from January 12 through January 25, 1968 exclusive of Saturdays and Sundays, between the hours of 8:30 a.m. and 4:30 p.m. Copies of the map are available for distribution at the office of the Town Clerk.

PLANNING BOARD  
TOWN OF BELLEVILLE, NEW JERSEY  
Edward G. Hebert,  
Chairman  
Paul M. Hannan, Secretary  
January 11, 1968 #B817

in the economic structure of the community.

Paul J. McDonald, an eighth candidate, withdrew his name from the ballot last week.

## Matmen Play Kearny

(Continued From Page 1)

ing' only by a close decision. In the 157 pound class Allan D'Augustino came from behind in both the second and third periods to earn a tie. Next, Jim Wile lost a close decision 4-3 to Miloch.

The last two matches again were all Belleville. In the 178 pound class, Bob Bonfante decided his opponent 4-2 and in the heavyweight class Barry Peirce after 5 minutes and 40 seconds of match, pinned his 250 pound rival.

The final score of the meet was 19 - 29, East Paterson on top.

On Friday, Belleville traveled to Irvington to take on the Campers in the first of their new night matches. It was a see-saw battle until Irvington rallied at the halfway point and took the match 25-17.

The Campers started out with a 3-0 lead when Robert Riboli was decision by Calantoni with an individual bout score of 5-0. John Perraino then tied it up by beating Frolick 7-0 and nearly pinning his man in the last period.

## BELLEVILLE - IRVINGTON

98	Calantoni (I)	decided
196	Perraino (B)	decided
115	Zoppi (B)	decided
123	Supkin (I)	decided
129	Towns (B)	decided
136	Montifucio (I)	decided
141	Bartnik (I)	pinned
148	Hill (I)	pinned
157	Siegle (I)	decided
168	Maser (I)	decided
178	Bonfante (B)	decided
Hut	Peirce (B)	pinned

## BELLEVILLE - EAST PATERSON

98	Reboli (B)	decided
106	Martinelli (EP)	decided
115	Zoppi (B)	pinned
123	Nappi (B)	tied
129	Greuter (EP)	pinned
136	Stolknight (EP)	pinned
141	Ciolino (EP)	decided
148	Delmarco (EP)	pinned
157	D'Augustino (B)	tied
168	Miloch (EP)	decided
178	Bonafante (B)	decided
Hwt	Peirce (B)	pinned

John Zoppi followed, and decided Irvington's Todaro 4-3 to put the Bellboys in the lead. The Campers bounced back however when Lupkin beat Jack Wille, and tied up the match 6-6.

The biggest match of the night was an upset victory by Jesse Townes over a much more experienced Zapico as he decided his Camper 6-3.

This put Belleville ahead again 9-6. Then the roof fell in as Harry Maroulakos, Allen D'Augustino, and Jim Wille were decided and Neil Schwartz and Dunny Stefanelli were pinned.

With the score now Irvington 25-9, Bob Bonfante helped pick up the end of the match by decisioning Linarducci 10-1, almost pinning his man twice in the second and third periods.

Heavyweight Barry Peirce ended the match by pinning his man after four minutes and 22 seconds to make the team score 25-17.

The Belleville matmen scored a 28-24 victory over Barringer on Wednesday.

With the help of the forfeits by overweight Barringer men the Bellboys clinched the match at the halfway point.

The Barringer Team put on a strong bid near the finish, but could not overtake the local grappling squad.

Robert Reboli, in the first bout, decided Barringer's Rouse 10-7, scoring two predicaments and staying on top of his opponent for much of the match.

John Perraino then collected a forfeit over Cage and the Bellboys led with a team score of 8-0. John Zoppi furthered the cause by pinning Fuller in the second period.

After Zoppi's pin and another forfeit, Belleville had a 18-0 lead.

## CYO To Give A Workshop

Essex County CYO has scheduled its One-Act Play Drama Workshop for Friday evenings, January 19 and 26 at Seton Hall University's Theater in the Round. Pre-registration for the program, which is being sponsored free of charge, is a necessity. Interested persons should register by January 15.

The workshop, which will convene at 8:30 p.m. on both evenings, is geared primarily for those who direct one-act plays and those interested in learning how to direct properly.

Conducting the workshop will be Gil Rathbun, drama professor at Seton Hall University and director of many parish plays in and around Essex.

The following subjects will be featured in the two-evening program, how to become a director in one easy lesson, selecting the script and casting the play, the theater plant and stage glossary, art of the theater, qualifications for acting, and qualifications for directing.

**LEGAL NOTICE**

**TOWN ORDINANCE**  
PUBLIC NOTICE is hereby given that the following Ordinance was passed on the second and final reading at a meeting of the Board of Commissioners of the Town of Belleville, held on Monday evening, January 8, 1968, having been read in its final form at least one week prior thereto and is therefore now a law and hereby published according to law.

**"AN ORDINANCE TO AMEND AN ORDINANCE ENTITLED, 'AN ORDINANCE CREATING PERMANENT POSITIONS AND ADOPTING RECLASSIFICATION AND COMPENSATION PLANS PROMULGATED BY THE NEW JERSEY STATE DEPARTMENT**

**OF CIVIL SERVICE IN AND FOR THE TOWN OF BELLEVILLE, IN THE COUNTY OF ESSEX," Adopted September 12, 1966.**  
Commissioner William H. Cullen - Yes  
Commissioner Joseph F. McGreevy - Yes  
Commissioner Mary V. Senatore - Yes  
Commissioner Vincent T. Strumolo - Absent  
Kenneth L. Smith, Mayor - Yes  
Passed First Reading: Dec. 26, 1967.  
Passed Second Reading: Jan. 8, 1968.  
ADOPTED: Jan. 8, 1968.  
ATTEST: EUGENE G. BARNETT  
Town Clerk  
January 11, 1968 #B818

**AWARD** for 25 years of service with International Telephone and Telegraph Corporation is presented Norbert Leonard (right), 242 Washington Avenue, Belleville, by William T. Duffy, director-personnel, ITT Avionics Division. Nutley, Leonard is a planner with ITT Avionics Division.



# 'I Never Knew a Former Football Player to be Ashamed Of a Few Naughty Words,' Clancy Says About Tony Greco

Gerald J. Clancy, supervisor of the Essex County Youth Commission, further explains his unhappiness with the Board of Education and his plans for developing a successful child care center in the community.

Regarding the school board involvement with his care center for children Clancy said:

"The very person who came to my office to get the program in motion has never entered my office since that time, and I have not talked to her. She, however, misquotes

me when she states I did not have insurance and did not notify the board. The nicest thing she could have done was to check with me before she added her two cents in taking me apart.

"As for your Superintendent of Schools, if I did use some profanity it was used only to him and because I was mad. I never knew a former football player to be ashamed of a few naughty words, especially when they were apropos to the situation. I know the good superintendent is new and I

liked him, but to protect the Board of Education, he makes an issue of my profanity. Was there anything, however, mentioned by Mr. Greco to the following:

## Didn't Return Call

"I called Mr. Greco, after a call was made in my presence, to the Superintendent from Dr. Frank Di Ruggero's office. When I phoned Mr. Greco, as arranged, he stated he would get back to me in a day or two. First he had to talk to the board. He never returned my call. I called him

twice on Monday, and was told that he had had an awful time with the board over my small project. I asked why. He said, "They want some facts." I requested him to enumerate them so I could submit them to him. It was then I informed him that I thought 'the Board of Education had sawdust between their ears' for not granting these working mothers the use of one small classroom and the use of the school bus. If this incurred overtime for the bus driver, I would assume the expense. Nothing further happened as far as Mr. Greco was concerned.

"I then talked to Harold Dufford's secretary. She informed me that it was Mr. Dufford's duty to allocate such services for the Board of Education. After I discussed my needs in detail and wrote about them to her, I was told she would talk to Mr. Dufford and report back to me. No other word from that office. I then thought that if they were trying since 1964 to get the use of one classroom for three hours every afternoon and the school bus, I got off easy in not receiving an answer from any official of the board after three weeks of time and effort. I then decided to run the center, with the Rev. Benedetto Pascale's help.

**Small Minds**  
"The crux of the entire problem stems from small minds. I have no axe to grind with the Superintendent or the Board of Education, not with any politician. I was only trying to help the town in allowing honest mothers, who are separated, widowed or alone with school age children to work instead of crowding the welfare rolls. They have pride, ability and want to be self-supporting, but they need to have their small children taken care of between 3 and 6 p.m., when the children are dismissed from school. It seemed to be an excellent program and I am still trying to get it federalized but this takes time. I thought in the meantime it could be worked locally through the Board of Education. It seems I was wrong.

"The Board of Education was obligated for a small

classroom in School three at 3 - 6 p.m. where the school bus would drop them off. It would also leave them at the that area. It would only involve extending the insurance for three extra hours for a number of children. The heat and janitorial service would be on normally to 9 p.m. at School three. All other needs would have been supplied by the women through a payment of \$5 a week. Is this such a complicated project that it takes three years to organize?

"To the member who remarked that 'We do not want

anything to do with these federalized programs', I must clarify the situation. We are only interested in the formation of the program. Our office will not control it, we are only helping to set it up. I printed thousands of notices and applications that were sent to the schools through the authority of Mr. Greco. At that time he commented that it was an excellent program. What happened since then, Mr. Greco? I gave the program the use of my office with its staff of two girls, and was willing to operate half the program out of my own office.

Three girls and boys volunteered to remain after school to keep the younger children in order.

"I had also promoted the milk through one of my business friends, and perhaps could have worked out an agreement that would have eliminated some costs for the mothers with other business associates. Up to this writing I have defrayed all of the current expenses out of my own pocket to get the program working.

"My boss and Director Martin Lordi gave me carte blanche to see that it worked,

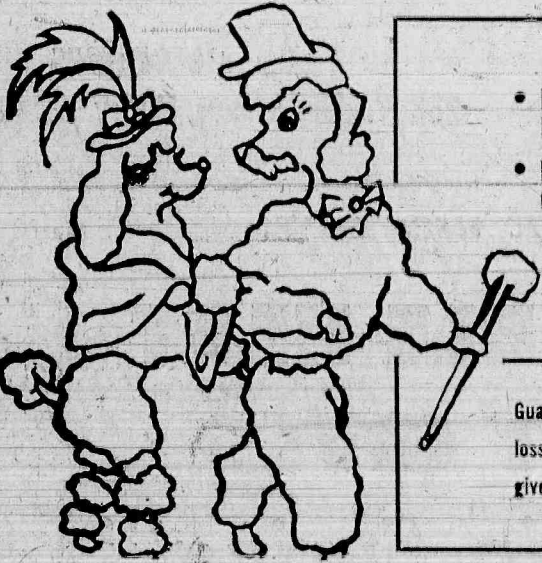
but not through the offices of the Commission of Economic Opportunity. He personally was for the program. I have been in public relations for some 40 years and I was always a doer and not a talker. Too bad there are not more doers around, too much red tape, otherwise.

## Never Asked to Appear

"I was never asked to appear before the Board of Education at any time. I was visited by a man from another agency who had a long list of questions to ask me about the hows and wherefores of the

(Continued On Page 17)

**POODLES IN THE "KNOW"** 991-4668  
**WILL BE ON THE GO TOO...** 991-6833  
**"POODLES BOUTIQUE"**  
842 KEARNY AVENUE KEARNY



## —FEATURING—

- PROFESSIONAL GROOMING OF "ALL BREEDS"
- NO TRANQUILIZERS GIVEN
- QUALITY POODLE & BORZOI PUPPIES
- TATTOOING SERVICE

Guard your pet against theft or loss. Maximum protection is given a pet who is tattooed.  
By Appointment

## The Beauty Salon For A "Poodle" Of Distinction

"New Puppy in Your Home!" Congratulations. Start his grooming early. Comb & brush him. Have his face, feet & tail clipped. This can be done by us while you wait.

STYLING DONE BY "GEORGIA"

EXPERIENCED IN GROOMING, SHOWING AND BREEDING OF QUALITY DOGS SINCE 1948.



## NATIONAL NEWARK & ESSEX BANK

New Jersey's First / 31 locations throughout Essex County

## CONDENSED STATEMENT OF CONDITION / December 31, 1967

Cash and Cash Items	\$ 87,479,917
United States Government Obligations	46,018,316
State and Municipal Securities	93,278,207
Other Securities	2,538,705
Investment in Franklin Capital Corporation*	1,434,362
Loans After Deducting Reserve for Possible Loan Losses: 1967, \$7,945,078	272,977,786
Mortgages on Real Estate	101,670,273
Banking Premises and Equipment	8,520,191
Accrued Interest and Other Assets	5,797,653
	\$619,715,410

## LIABILITIES AND CAPITAL ACCOUNTS

Deposits	
Demand	\$330,181,308
Savings	158,955,958
Other Time	61,831,693
Total Deposits	\$550,968,959
Remittance Account—Federal Reserve Bank	11,776,407
Accrued Taxes and Other Expenses	2,450,581
Dividend Payable—January 1	732,085
Unearned Income	8,364,406
	\$574,292,438

Capital Accounts	
Capital Stock (Par Value \$10 Per Share) Authorized, Issued, and Outstanding: 1967, 1,464,170 shares	\$ 14,641,700
Surplus	25,358,300
Undivided Profits	5,422,972
Total Capital Accounts	\$ 45,422,972
	\$619,715,410

\*A wholly owned subsidiary of National Newark & Essex Bank. Securities carried at \$47,633,970 in the above statement are pledged for fiduciary powers, to secure public monies as required by law, and other purposes.

## DIRECTORS

ROBERT E. COWAN  
Chairman of the Board  
BUSTAVE E. WIEDENMAYER  
President  
THOMAS E. WALKER  
Counsel  
Pitney, Hardin & Kipp  
HARRY W. JONES  
Vice President  
Hospital Service Plan of N. J.  
JOHN F. KIDDE  
Chairman of the Executive Committee  
Walter Kidde & Co., Inc.  
CECIL R. BERRY  
Retired  
RICHARD B. SCUDDER  
Publisher  
Newark Evening News  
CHARLES W. ENGLISHARD  
Chairman of the Board  
English Industries, Inc.  
ROBERT O. DRIVER  
President  
Wilbur B. Driver Company  
ELMER O. GOODWIN  
Counselor at Law  
DONALD B. KIPP  
Partner  
Pitney, Hardin & Kipp  
KENNETH H. KLIPSTEIN  
Director  
International Pipe & Ceramic Corporation  
FRED R. SULLIVAN  
Chairman of the Board  
& Chief Executive Officer  
Walter Kidde & Co., Inc.  
S. WHITNEY LANGON  
President  
Turrell Fund  
JOHN W. KRESS  
President  
The Howard Savings Institution  
JAMES F. CRAFTS  
Chairman of the Executive Committee  
The Fund American Companies  
ALLAN M. HIRSH, JR.  
Director  
International Pipe & Ceramic Corporation  
WILLIAM E. McKENNA  
President & Chief Executive Officer  
Hunt Foods & Industries, Inc.  
FREDERICK M. COOK  
Chairman of the Board & President  
Congoleum-Malin, Inc.  
THERON L. MARSH  
Executive Vice President & Cashier  
WALTER W. WELLS, JR.  
Administrative Vice President  
Hoffmann-La Roche, Inc.  
ARTHUR G. PULIS, JR.  
President  
Franklin Capital Corporation  
W. H. CONZEN  
President  
Schering Corporation  
HERBERT L. SEEDAL  
President & Chief Executive Officer  
Bamberger's New Jersey  
JAMES F. THORNTON  
President  
Lumina Company

# MEAT

trimmed to your taste

at  
**FARM FRESH**

USDA PRIME-CHOICE MEATS • CHOICE COLD CUTS

FRESH KILLED POULTRY

All Products Sold are U.S. Gov't. Inspected



WITH THIS COUPON

TAKE 25¢ OFF  
ON ANY 3 LBS. OF  
**CHOP MEAT**

**LONDON BROIL**  
**99¢ lb**

COMPARE  
OUR  
PRICES  
&  
QUALITY

**SIRLOIN ROAST**  
**98¢ lb**

SHOULDER LAMB CHOPS 79¢ lb.  
LAMB SHANKS 3 lbs. for 1.00  
LAMB STEW 3 lbs. for 1.00

**EYE ROUND ROAST**  
**\$1.09 lb**

BEEF for Stew  
AND  
VEAL for Stew  
**79¢ lb**

Italian Style  
**VEAL CUTLETS**  
**\$1.59 lb**

FRESH CUT  
Chicken Breast lb. 49¢  
Chicken Legs lb. 39¢  
Chicken Wings 3 lbs. for 1.00

ALL BEEF  
**CHOP MEAT** 59¢ lb  
2 lbs. for 1.15  
(Ground To Order)

CENTER CUT  
**PORK CHOPS** 79¢ lb

Lean, Domestic  
**BOILED HAM** 99¢ lb  
(Sliced To Order)

**CUBE STEAKS** 99¢ lb

**CHICKEN STEAKS** 99¢ lb

**FLANK STEAKS** 99¢ lb

**FARM FRESH**

NOT RESPONSIBLE FOR TYPOGRAPHICAL ERRORS  
**229 FRANKLIN AVE.**

At The Center

**NUTLEY, 667-0081**

(ASK US ABOUT OUR CATERING SERVICE)

Open Fri. Eve till 8:00 — Sunday 8:00 till 1:00



## OBITUARIES

### Mrs. Nella Zanettini, 75; Dies In Hollywood, Fla.

A High Mass of Requiem was offered in St. Peter's Church, Friday morning, for Mrs. Nella Fava Zanettini, of 174 Union Avenue, who died December 23 in Hollywood, Florida. She was 75.

Born in Italy, Mrs. Zanettini resided for a short time in Montclair before moving to Belleville 24 years ago.

Survivors include, her husband, Emil Zanettini, a son, Reno Zanettini of Montclair; a daughter, Mrs. Frank (Josephine) Loverdi of Belleville and three grandchildren.

Officiating at the ceremony was Rev. Richard J. Gronski. The Kiernan Funeral Home, 101 Union Avenue handled the funeral arrangements. Interment was in Immaculate Conception Cemetery, Montclair.

### Howard Thompson, 63 Lived Here 50 Years

Services were held on January 5 for John Howard Thompson of 174 New Street, who died suddenly January 1 at Clara Maass Memorial Hospital. He was 63.

Employed by Westinghouse, where he worked as a supervisor, Mr. Thompson had been a resident of Belleville for over 50 years. He was a member of Wesley Methodist Church. He leaves his wife, Gertrude Hanschka Thompson; two daughters, Mrs. Elizabeth Ann Stevenson of Edison, Mrs. Jean Donhauser of Pompton Lakes; a sister, Mrs. Hazel Woodward of Orlando, Florida and ten grandchildren.

The funeral was at the William V. Irvine and Son Memorial Home, 276 Washington Avenue, Belleville, January 5. Interment was at Glendale Cemetery, Bloomfield.

### Mrs. J. Dayton After Illness

A High Mass was offered in St. Peter's Church, Thursday, for Mrs. Johanna Dayton, 78, of 76 Greylock Avenue, who died December 25 at the Clara Maass Memorial Hospital after a long illness. Officiating was Rev. James Heavey.

Born in Hoboken, Mrs. Dayton was a resident of Belleville for 40 years. She was married to the late Grant J. Dayton who predeceased her in 1951.

Surviving is a son, Robert Dayton of Belleville.

The Kiernan Funeral Home, 101 Union Avenue, handled the funeral arrangements. Interment was in Holy Cross Cemetery, North Arlington.

### High Mass of Requiem For Edward J. Nelson

A High Mass of Requiem was held at St. Peter's Church January 8 for Edward J. Nelson of 132 William Street. Mr. Nelson, who was 66, died suddenly at home.

He was employed by Humble Oil Company as a truck driver before his retirement. Formerly of South Amboy and Newark, he resided in Belleville for the past six months. His wife was the late Eileen M. Scully Nelson.

He is survived by three sons, Edward J., Paul and Lawrence, all of Belleville.

The funeral was from the Kiernan Funeral Home, 101 Union Avenue, January 8. It was followed by the High Mass at St. Peter's Church. Interment was at St. John's Cemetery, Orange.

### Mrs. Roemmele Succumbs at 92

Louise H. Roemmele of 93 Beech Street, Belleville, died suddenly on January 3 at home. She was 92.

She leaves two sons, George A. of Maplewood, and William L. of Belleville; one grandchild and two great-grandchildren.

Services were at the William V. Irvine and Son Memorial Home at 276 Washington Avenue on January 8. Interment was in the family plot at Fair-

## Two Belleville Brothers Fined For Assaulting Nutley Police

Two Belleville brothers were convicted of assaulting two Nutley Police officers and using profane language in an incident arising from a motor vehicle incident here.

Fined a total of \$150 were Roger Williams 25, and John Williams, 26, both of 111 Bel-mohr Street, Belleville.

They pleaded guilty before Judge Edwin J. C. Joerg's Criminal Court of assaulting Police Sergeants Robert De Litta and Theodore Stein-meyer.

Joerg fined the two brothers \$25 each for using profane language and \$50 each for the assault.

### Oratorio Society Continues Auditions for Back Work

The Oratorio Society of New Jersey will continue to hold auditions during the month of January.

Scheduled for an April performance is Bach's The Passion According to St. Matthew for double chorus, soloists and orchestra. Being the most inspired treatment of this subject in the entire range of music, The Passion is the apotheosis of Lutheran church music.

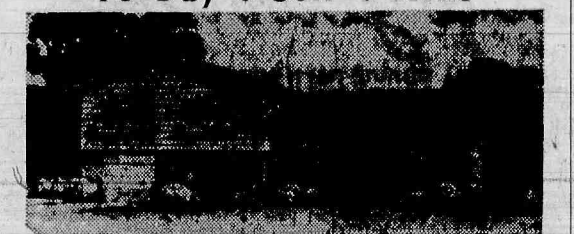
In it, Bach merged all the styles of the Baroque under one central religious theme.

Rehearsals are held at the parish house of the First Congregational church in Montclair, on the Crescent just off South Fullerton Avenue Tues-day evenings at 8 p.m.

The hardest work of some people is to appear important.

**Suit Club Winners**  
G. MANFRA, Paterson  
F. COCCHIOLA, JR., Nutley  
**FRANKLIN MEN'S SHOP**  
240 FRANKLIN AVE.,  
at the Center  
NEW SUIT CLUB  
NOW IN PROGRESS  
Hours: 9 A.M. to 9 P.M.—  
9 A.M. to 6 P.M.  
Tues., Wed., Thurs. & Sat.  
667-0189

### For The Home You Want To Buy • Sell • Rent



### See Your Realtor

Bloomfield, Glen Ridge, Nutley  
Board of Realtors of  
and Belleville

**NUTLEY MEMBERS**

LIONEL N. BAL	545 Kingsland St.
GEORGE T. BOWES	677 Franklin Ave.
WILLIAM CALLANAN	510 Franklin Ave.
E. M. De MUNTER	510 Franklin Ave.
NUGENT A. FREEMAN INC.	225 Park Ave.
L. M. GILLIES AGENCY	244 Chestnut St.
ANNA M. HASCUP	378 Franklin Ave.
WILLIAM J. JERNICK JR.	301 Franklin Ave.
STANLEY JOHNSON	361 Franklin Ave.
GEORGE E. MacMUNN CO.	180 Centre St.
NUTLEY REALTY	371 Franklin Ave.
JOSEPH C. RECORDS	3 High St.
C. WALTER SEARLE	410 Franklin Ave.

**BELLEVILLE MEMBERS**

WILLIAM ABRAMSON	500 Washington Ave.
HARLAND D. BOY	612 Washington Ave.
JACOBS REALTY CO.	484 Washington Ave.
WILLIAM J. MADDAMS	537 Union Ave.
GEORGE B. PIFER	398 Washington Ave.
ROSE M. REILLY	394 Washington Ave.
NORMAN H. THOMPSON	302 Washington Ave.

Erich Abraham, 73, of 53 Kingsland Street died January 2 at St. Mary's Hospital, Orange, after a short illness.

Born in Passaic, he resided in Nutley 47 years and before retiring was a master mechanic for the Thomas A. Edison Company, West Orange.

A member of the Thomas A. Edison Old Timers Association of West Orange, he was a parishioner of St. Paul's Congregational Church of Nutley.

He leaves his wife, Olga M. Koehler Abraham; a daughter, Mrs. James Rose of Bloomfield; a son, Howard Abraham of South Plainfield; two brothers, Herbert Abraham of Nutley and Felix Abraham of Newark, and five grandchildren.

Services were held Saturday at The Johnsee Home for Funerals, 536-538 Washington Avenue, The Rev. John H. El-

## Custom Slipcover Sale

ALL YOUR FAVORITE MATERIALS  
DRASTICALLY REDUCED...

Shop At Home Service  
CALL 661-2966

**PALME Decorators**  
283 Franklin Avenue, Nutley  
(Opp. Nutley H.S.)



A grateful Electric Glassheat user says:

## "IT'S A COMFORTABLE HEAT THAT GLASSHEAT GIVES Just like SUNSHINE in Spring!"

"...IT'S HEALTHFUL HEAT, TOO; WE HAD FEWER COLDS LAST WINTER and everyone felt fine," she continued. No wonder their health was improved. Electric Glassheat heats without flame, so there are no toxic fumes or vapor to pollute the air. The life-giving oxygen is not burned up and the humidity is kept at the most desirable and healthful level.

Money saving thermostats in every room make it easy to maintain exactly the temperature you want throughout the house. No drafty floors or cold corners, ever. And the rays that warm you are exactly like the rays of the sun. Imagine! Summer sunshine in every room all winter long. No wonder the Electric Glassheat house is a healthful as well as comfortable home.

"SO CLEAN! NO SOOT, DUST OR SMOKE, so we save on cleaning bills," says another owner.

"In all these years with Electric Glassheat we never needed to dry clean our drapes, or furniture. No need to repaint or even wash walls and ceiling. And our Venetian blinds still look fresh and new. Taking these facts into consideration lowers our cost of heating still more."

"SAVE MONEY ON ELECTRIC BILLS, ALSO! "We expected Glassheat to be inexpensive to operate but it amazed us by costing even less than estimated. And since we can now take advantage of the special low heating rate we save on our regular current, too. And of course there are no main-



tenance or service charges! still another saving." Another Glassheat owner says, "We added two rooms, but still my heating bill is \$175." Again and again people install Electric Glassheat because of its many outstanding advantages, and then are delighted to discover that this remarkable form of heat is an economy as well.

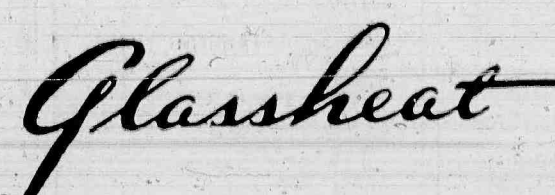
Since there are no moving parts there is no sound. Electric Glassheat is as silent as sunshine, and as pleasant. Saves space, too, for the area usually occupied by radiators, boilers and flues is yours to use as extra living space and a better arrangement of furniture.

IT'S SAFE AND SILENT! Electric Glassheat can't overheat, and it is absolutely fire-safe. Even accidental contact can't cause blistering and there are no fumes or vapor to worry about.

WHY PAY MORE FOR LESS? Sound ideal? It is, as many owners will tell you. If you would like to know how little this luxurious—but economical heat will cost you, send the coupon or call in person.

FOR FACTS ON THIS UNIQUE NEW ELECTRIC HEATING SYSTEM, CALL OR USE THE COUPON

**RADIANT ELECTRIC**



## ALBERT MARTIN

Phones: 779-0567 — 773-4202  
The best in heating since 1886

FREE Estimate Coupon!

ALBERT MARTIN, INC.  
169 Prospect St., Passaic, N. J.

Yes, I'd like to learn more about the savings, comfort, convenience, and health advantages of Radiant Electric "Glassheat". Please send complete information. No obligation, of course.

I am interested in: ☐ Whole house heating  
(Please check) ☐ Auxiliary (cold room) heating  
☐ Heating Farm

Name \_\_\_\_\_  
Address \_\_\_\_\_  
Telephone Number \_\_\_\_\_

## FAF'S Winter Special Sale

<b>ARMSTRONG Vinyl Corlon INLAID SERANADA</b> 9 x 12 reg. 132.00 <b>\$105<sup>00</sup></b> Completely installed	<b>WALL TO WALL CARPETING ACRILAN by CHEMSTRAND</b> <b>\$10<sup>95</sup></b> sq. yd. completely installed w/padding RANDOM SHEARED... TEXTURED
---	---

<b>ARMSTRONG ACCOTONE CUSHION FLOOR</b> 9 x 12 <b>\$44<sup>95</sup></b> installed	<b>ARMSTRONG Vinyl Corlon MONTINA</b> 9 x 12 <b>\$123<sup>50</sup></b> Completely installed Reg. 149.00	<b>9 x 12 VINYL RUGS</b> <b>\$8<sup>75</sup></b> reg. 11.95
--	---	---

<b>BROADLOOM SALE 100% VIRGIN ACRILIC DUPONT "50" NYLON</b> Textures... Two Tones 31 Beautiful Colors <b>5<sup>99</sup></b> sq. yd.	<b>ARMSTRONG VINYL CORLON INLAID SABRIL</b> 9 x 12 Completely installed <b>84<sup>50</sup></b> Reg. 103.00	<b>ROOM SIZE RUGS</b> 9x12 <b>39<sup>95</sup></b> 12x18 <b>87<sup>95</sup></b> 12x12 <b>57<sup>95</sup></b> 12x21 <b>99<sup>95</sup></b> 12x15 <b>72<sup>95</sup></b> 6x 9 <b>25<sup>95</sup></b> 100% NYLON TWEEDS... PLAINS
--	--	---

<b>5 Ft. Alum. LADDER</b> 10.50 VALUE <b>7<sup>75</sup></b>	<b>Red Devil Super White Kitchen &amp; Bath ENAMEL</b> REG. 7.85 <b>5<sup>75</sup></b> gal.	<b>WALLPAPER Up To 50% DISCOUNT</b>
<b>100% Pure Vinyl Latex Interior Flat White &amp; Colors</b> gal. <b>3<sup>50</sup></b>	<b>Red Devil Interior VINYL FLAT</b> White & Colors REG. 7.20 <b>4<sup>75</sup></b> gal.	<b>Paint ROLLER &amp; TRAY SET</b> 89c VALUE <b>59<sup>00</sup></b>
<b>Matching Colors In Latex LATEX SEMI-GLOSS</b> qt. <b>1<sup>85</sup></b>	<b>Mon 'I' War Ultra Spar</b> REG. 3.00 <b>2<sup>25</sup></b> qt.	<b>Porch &amp; Deck Enamel Interior Latex Flat White &amp; Colors</b> gal. <b>2<sup>95</sup></b>

FREE DELIVERY Floor Coverings **FAF'S** Paints Wallpapers  
893 FRANKLIN AVE., NEWARK Near Heller Parkway HU 2-7859





**SPIRITED NURSES** — Three junior student nurses pose in full regalia in front of the Christmas tree they helped to erect on the pediatrics ward of Clara Maass Memorial Hospital. Currently staying in the nurses quarters behind the hospital the three girls are, from left to right: Kathleen McCarey of Woodbury; Charlene Lube of Mount Ephraim and Alice Stockel of Woodbridge.

# Belleville Frosh Basketball Team Overcomes Irvington

By JOHN MCCARTHY

The freshman basketball team beat the Irvington frosh in a very well played game, 42-39, on Tuesday. The freshman record now stands at 3-4.

With ten seconds left in the first quarter, and the score 9-6 with Belleville leading, Rocco Marrotti went downfield with the ball and sank a jump shot. As the ball was taken upcourt by Irvington's Bruce Warshawsky, "Roc" stole the ball and ran towards the basket shooting on the run. The shot missed, but Ron (Moose) Muscara grabbed the rebound and scored the basket.

Rocco led the team in total points as he scored three field goals in twelve shots and three free throws out of six at-

tempts.

The starting five, Marrotti, Muscara, Maeri, Atherton and Caravetta total seventeen personal fouls as Moose was the first to foul out, followed by subs Tom Vitiello and Charles Ziegler were next, then Rocco Marrotti. These fouls did have an amazing effect on the final score as Irvington scored 21 points, more than half their total score on free throws.

The box score:

IRVINGTON (39)	G	F	T
Reynolds	5	7	17
Conrad	2	5	9
Hyman	1	3	5
Moutinho	1	6	8
Warshawsky	0	0	0
Lieb	0	0	0
Totals	9	21	39
BELLEVILLE (42)	G	F	T
Muscara	2	1	5
Marrotti	3	3	9
Maeri	2	2	6
Atherton	1	2	4
Caravetta	1	3	5
Fersko	1	0	2
Vitiello	3	1	7

Ziegler	2	0	4
Hyman	1	3	5
Totals	15	12	42
Referees:	Forte	and	Berlin-ski
Irv.	7	14	8 10-39
Bell.	13	13	11 5-42

Experts look into the question of why we live; average citizens might attend to the "how we live" problem.

The Army ought to be able to use any American who is well enough to hold down a steady job.

## Susan Frank, Vocalist, Sings Club Circuit

Ronny Fragner's Jersey Travelers featuring vocalist Susan Frank, of Belleville, have just completed a very successful musical 1967 with engagements at the Kearny Loyal Order of Moose; Fort Lee VFW; Essex Fells Elk's Lodge; Jersey City Singles' College Graduate Club; Short Hills Stoeffler's Restaurant; private parties in Ridgewood and Englewood; The New Rochelle and Larchmont American Legion Posts of New York; and New Year's Eve at Elizabeth St. Patrick's Church hall.



### Opticians Zenith HEARING AIDS

Raymond G. Marshall

460 Franklin St., Bloomfield  
Pilgrim 3-6950

Hours: 9:30-5:30 Daily  
9:30-1:00 Sat.  
7:00-8:30 Thurs. Eve.

Other stores in Caldwell and Pompton Lakes

## HEATING OIL



### COUNT ON US!

Anytime, any weather you can count on us for prompt delivery of your oil. Call us and then forget about heating worries.



Phone For Service PL-9-1907

"Customers are our salesmen"

## Kirk's Automatic Transmission

One of the most reputable and finest transmission specialist shops in the area.

**FREE ESTIMATES**

**ONE DAY SERVICE**

**ALL WORK GUARANTEED**

Reliable Personal Service To All

**CALL US — FIND OUT FOR YOURSELF**

20 RIVER RD. 998-9666 NO. ARLINGTON N.J.

## Nick Valentine Completes Air Force Training

Airman Nicholas A. Valentine Jr., son of Mr. and Mrs. Nicholas Valentine, 77 Lighth Street, Belleville, has completed basic training at Lackland AFB, Tex. He is now assigned as a security policeman with a unit of the Strategic Air Command at K. I. Sawyer

Learn To Play The **PIANO** with **FRANK ROSA** CALL PL 1-0338

# Mr. Furniture's Inventory Sale

It's INVENTORY TIME AT THE WAREHOUSE . . . and it's your time to save at prices way below Mr. Furniture's low, low warehouse prices. Every item is this sale is available for immediate delivery. Here are just a few of the MANY, MANY BARGAINS. Remember . . . even during our INVENTORY CLEARANCE SALE no delivery charge and NO DOWN PAYMENT.

**SLIP COVER SALE**

Give your living room a new look with the New Year. SAVE MONEY - SAVE STEPS - SAVE TIME . . . Just call Mr. Furniture, 998-8484 and arrange an appointment in your home. Beautiful fabrics and patterns galore from which to choose.

**DRASTIC INVENTORY CLOSE-OUT**

**3 Piece Bedroom Sets**

**BED • DRESSER • CHEST**

Just a few left, and mostly one of a kind. Never again will Mr. Furniture be able to offer such a terrific value for this well built economy bed room set.

**\$139**

Inventory Clearance On All Pictures, Wall Plaques, Pole Lamps And Head Boards.

Every one must go at lower than ever Mr. Furniture Warehouse prices.

**40% OFF**

**KITCHEN AND DINETTE SETS**

All with mar-proof, stain-proof tops, chrome or bronze-tone legs. Well upholstered seats and backs.

**5 piece sets \$38 from**

**7 piece sets \$59.95 from**

**HOLLYWOOD BEDS**

Decorator styled headboard to go with box spring, mattress and legs. Assorted styles on hand in vinyl fabric. Metal or wood construction slightly higher.

**\$48**

**INSTANT CREDIT.** Mr. Furniture gets you a speedy O.K. on your credit . . . and 36 months to pay. PLUS NO DOWN PAYMENT. NEVER A DELIVERY CHARGE! Tuesday, Wednesday and Saturday to 5:30 P.M.

**EASY TO REACH** . . . Public Service Bus No. 38 and No. 39 stop at our door.

**OPEN MONDAY, THURSDAY AND FRIDAY to 9 P.M.**

**SUPER DISCOUNTS ON ALL APPLIANCES**

\*WASHERS \*COLOR T.V. \*REGULAR T.V. \*REFRIGERATORS \*STEREOS

**SAVE UP TO 40%**

**RECLINING CHAIR or ROCKER \$59**

Relax like a king. Several styles still left for Mr. Furniture's Inventory Clearance.

**MR. FURNITURE WAREHOUSE**

151 KEARNY AVE., KEARNY DIAL 998-8484

Member Chamber of Commerce

Now  
Subscribe  
To The  
Magazine  
Of Your  
Choice  
**\$2.00**  
When  
You  
Subscribe  
To The  
Belleville Times

TAKE ONE MAGAZINE LISTED BELOW  
AND THIS NEWSPAPER (\$4 reg. sub. price)  
... BOTH FOR **\$6.00**

**ARGOSY**

**POST**

**McCall's**

**LOOK**

**JOU**

- ☐ Argosy (for men)
- ☐ Better Homes & Gardens
- ☐ Ellery Queen's Mystery Mag.
- ☐ Good Housekeeping
- ☐ HairDo
- ☐ Humpty Dumpty (10 iss.)
- ☐ Ingenue (Teen-agers)
- ☐ Ladies' Home Journal
- ☐ Life (Weekly)
- ☐ Look (26 iss.)
- ☐ McCall's
- ☐ Mechanix Illustrated
- ☐ Modern Romances
- ☐ Popular Mechanics
- ☐ Redbook
- ☐ Saturday Eve. Post (26 iss.)
- ☐ Sports Afield
- ☐ True (The Man's Magazine)

**FILL OUT COUPON-MAIL TODAY**

**THE BELLEVILLE TIMES**  
246 WASHINGTON AVE.  
BELLEVILLE, N.J. 07109

Check magazine desired and enclose form with coupon.

Gentlemen: I enclose \$ . . . . . Please send me the offer with a year's subscription to your newspaper.

**NAME** . . . . .

**ADDRESS** . . . . .

**ZIP** . . . . .

Please allow 4 to 8 weeks for first magazine to arrive

<input type="checkbox"/> U. S. Camera	<input type="checkbox"/> American Home (10 iss.)
<input type="checkbox"/> American Girl	<input type="checkbox"/> Catholic Digest
<input type="checkbox"/> Parents' Magazine	<input type="checkbox"/> Christian Herald
<input type="checkbox"/> Science & Mechanics	<input type="checkbox"/> Farm Journal
<input type="checkbox"/> Sport	<input type="checkbox"/> Field & Stream
<input type="checkbox"/> Sports Afield	<input type="checkbox"/> Ingenue (Teen-agers)
<input type="checkbox"/> True Story	





**GAY NINETIES NIGHT** — Student nurses at Clara Maass School of Nursing put on a miniature Broadway production for two nights when they staged a gay nineties show called "The Red Garter". Pictured above from left to right in the front row are: Joyce Kolbek, general chairman; Dr. Joseph C. D'Angelo, master of ceremonies; Edie Faust,

decorations; and Diana Rouse, publicity. In the back row are Kathy Allen, refreshments; Jane Mason, class president; Maryellen Krobek, waitress and waiters committee; Joanne Penn, business manager; and Bobbi Delcastilho, decorations.

## Jewish Geniuses Discussion Topic



**DR. HENRY ENOCH KAGAN**

The second of a two-part lecture series, jointly presented by the Synagogues of Belleville, Nutley and Kearny, will take place Sunday evening on January 14th at 8 p.m. at Congregation Ahavath Achim at 125 Academy Street in Belleville.

Dr. Henry Enoch Kagan, Rabbi of Sinai Temple, Mt. Vernon, N.Y., will speak on "The six who changed the world - a psychological analysis of Jewish geniuses - Moses, Jesus, Paul, Marx, Freud, and Einstein."

Dr. Kagan is a unique figure in the American Rabbinate, for he is both Rabbi and a qualified psychologist. He is one of the country's leading advocates of the union between religion and psychiatry, and has made unusual contributions in the field of religious counseling.

For his contributions regarding the practical application of religion to human betterment, Dr. Kagan was chosen the outstanding Rabbi in Metropolitan New York for the year 1961 by a Special Award Committee sponsored by the New York Federation of Jewish Philanthropies and representing the three branches of Judaism.

To his credit as author or co-author are the following books: Changing the Attitude of Christian Toward Jew; a Psychological Approach Through Religion, Judaism

and Psychiatry; and Six Who Changed the World.

The public is invited to hear this "dynamic speaker" and join in a question period. Tickets will be sold at the door on Sunday evening, January 14.

### Planned Parenthood Fund Drive to Begin Campaign

Charles P. Hoyt of 165 Old Short Hills Road, Short Hills, has been named special gifts chairman for the 1968 fund drive of the Essex County Committee for Planned Parenthood.

Planned Parenthood, with headquarters at 15 William Street, Newark, seeks funds from individuals and firms for the expansion of family planning services through neighborhood clinics. The organization will hold its annual reception Sunday at Mayfair arms, West Orange, with Dr. Alan F. Guttmacher, president of Planned Parenthood World Population, the principal speaker.

### TRAINING

High school graduates and others for a four-year apprenticeship as tool and die makers, moldmakers, machinists; also as trainees, including those past thirty, in a shorter program as machine tool specialists on a lathe, milling machine, grinder, jig-borer, numerical controlled machine or E.D.M.

For placement with one of our 300 member shops in the seven Northern New Jersey counties.

**HELP WANTED: JOURNEYMEN & RETIREES TO ASSIST IN ON-THE-JOB TRAINING**

**NEW JERSEY TOOL, DIE & PRECISION MACHINING ASSOCIATION**

P.O. Box 131 Bloomfield, N.J. 07003

**Dodge Cars**

**Dodge**

**Dodge Trucks**

**Dodge-Montclair**

10 ELM ST.  
MONTCLAIR • 744-3660  
Since 1933

### Interstate Route 280 Gets Additional Land

The federal government has authorized initial purchase of land for Interstate Route 280 in Hudson County, it was announced.

New Jersey Commissioner of Transportation David W. J. Goldberg said the U. S. Bureau of Public Roads has given a green light to the easternmost portion of 1,280 from the Stickle Bridge in East Newark through Harrison and Kearny to Interstate Route 95 (the New Jersey Turnpike).

As a result, detailed construction design of the segment which will take the inter-

state highway to its eastern terminus is under way and right of way acquisition has begun on two parcels. Additional right of way acquisitions will start when Federal approval of final design is received.

"The authorization by the Bureau of Public Roads to proceed with design and right of way plans marks another significant advance in the development of this important artery which will carry traffic from its parent Interstate Route 80 in Morris County through the heavily populated Oranges and Newark," Commissioner Goldberg said.

## Voice of Democracy Contest Has 3 Belleville Winners

Three Belleville High School students have been named winners of the 21st Annual "Voice of Democracy" essay contest sponsored by the Younger Alden Jr. VFW Post 275 and its ladies auxiliary.

The winners were Susan Long 393 Washington Ave., El-

len - Paserchia 9 Sycamore Drive, and Patricia Porzio 18 Arthur Avenue.

The top winner Miss Long will be awarded a certificate of merit and a plaque. The second and third place winners will also be given plaques in a ceremony at the Post Home 17 Belleville Avenue.

The population of the nation shows a marked increase but what we need is higher average intelligence.

It may sound silly but be careful about fires in your home - too many people are being burned to death.

Sunday at Joseph Baione VFW Post 5363 on South St. Newark, Miss Long will compete in a district contest against winners from high schools throughout Essex County.

Miss Mary Jamgochian of the high school faculty who was in charge of the essay contest at the school reported eighty contestants participated in the local contest.

Past Commander - Almerico

Resciniti and Mrs. Fred Ringer past president of the ladies auxiliary represented the post and auxiliary.

**BIVOLI**

Now Thru Tuesday  
ALL TECHNICOLOR SHOW  
PAUL NEWMAN  
"COOL HAND LUKE"  
ALSO  
UGO TOGNAZZI  
RHONDA FLEMING  
"Run For Your Wife"

SATURDAY MATINEE  
"ROBINSON CRUSOE ON MARS"  
PLUS  
"The Space Children"

### CENTRAL PASSAIC THEATRE

— 777-3800 —

Now Thru Tuesday  
2 HITS IN COLOR!

"Berserk"  
&  
"Jack of Diamonds"

### FRANKLIN

667-0100

NOW THRU TUES.

Sat. & Sun. Mats. Also

Hayley Mills Hywel Bennett

IN  
"THE FAMILY WAY"

— Also —  
Petet Sellers  
"THE BOBO"

### Meet Your Friends at GUYS and DOLLS

New Jersey's Most Elegant FAMILY BILLIARD LOUNGE  
35 Pastel Covered Tables  
Air Conditioned — Muzak — Snack Lounge  
Comfort Seating — Wall to Wall Carpeting

**524 Washington Ave., Belleville**  
(near cor. Overlook) PL 9-6217 #13 Bus Passes Door

## TORCH LOUNGE

EVERY  
FRI. SAT. SUN.  
THE  
FABULOUS  
Vagabonds

535 Ridge Rd.  
Lyndhurst  
N.J.

GO-GO  
GIRLS  
NITELY

438-9806

## Places to DINE and DANCE

**JADE FOUNTAIN**

402 RIDGE ROAD  
NORTH ARLINGTON, N.J.

• CHINESE • POLYNESIAN • AMERICAN EXPRESS DINERS CLUB  
• AMERICAN CUISINE  
• BANQUET FACILITIES  
• OUTGOING ORDERS A SPECIALTY  
• AIR CONDITIONING  
• COCKTAIL LOUNGE

CONFERENCE LUNCHEONS ARRANGED  
991-5377

**CHINESE FOOD**

**MOY BING**

CHINESE & AMERICAN RESTAURANT  
LUNCH & DINNER  
Chinese Family Dinners  
Combination Dinners  
Served ALL HOURS  
FOOD PREPARED TO TAKE OUT  
520 ORANGE ST. (cor. Myrtle)  
NEWARK  
482-1705

**SAN CARLO RESTAURANT**

Sizzling Steaks and  
Superb Italian Cuisine  
• Catering Facilities  
• 3 Banquet Rooms  
• Entertainment  
• Evening  
• Fri-Sat-Sun  
• Dining Room open for Lunch & Dinner

630 Stuyvesant Ave.,  
Lyndhurst, N.J.  
For reservations call WE 9-9083

WED., FRI., SAT., SUN.  
**JOHN GAMBA TRIO**  
FRI. & SAT.  
SONGSTYLIST  
**ANNE ROBINS**  
AT THE  
**PILOT'S LOUNGE**  
942 SO. ORANGE AVE.  
NEWARK  
Vailsburg Area  
ENTERTAINMENT 7 NITES  
A WEEK

**PANTRY PIZZA**

258 Wash. Ave., Belleville  
Phone 759-4339

**Pizza Bread Submarines**

Ham, Salsami, Provolone, Lettuce, Tomato, Onion, Oil and Vinegar  
**50¢**

**BEST PIZZA**  
Sandwiches — Subs  
Ravioli — Spaghetti  
25¢ Delivery in Town and S.C. Village; 50¢ out of Town

## DARWOOD COCKTAIL LOUNGE

751 Washington Ave. Belleville

NOW APPEARING  
FRI. & SAT.  
**The Bel Airs**

Entertainment Weekly  
**CATERING**  
FOR ALL OCCASIONS  
**PL 9-9812**

## THE LIVING ROOM SUPPER CLUB and COCKTAIL LOUNGE

21 NO. HARRISON ST. E. ORANGE

ENTERTAINMENT EVERY NIGHT

TUES. thru SATURDAY  
**BERRI BLAIR**

"MR. ENTERTAINMENT"  
SUN. & MON. **LOU NASH**

Lunches Daily From 11 A.M. to 2 P.M.  
**THICK FILET MIGNON STEAK \$2.00**

672-8600 GENTLEMEN — JACKETS PLEASE

For a taste of Rome...  
dine at The Fountain

For an evening  
of radiant splendor

enjoy our superb

CONTINENTAL

BUFFET

Every Monday  
Evening, 6 to 9 p.m.  
4.25 per person



Magnificent Italian and Continental specialties served in authentic Roman style — superb food as distinctive as the Fountains of Rome. Open Daily for Luncheon, Cocktails and Dinner. Dinner-Dancing Fri. Sat. Sun.

**THE FOUNTAIN** New Jersey's foremost Roman Restaurant  
Washington Avenue, Belleville, 751-3800

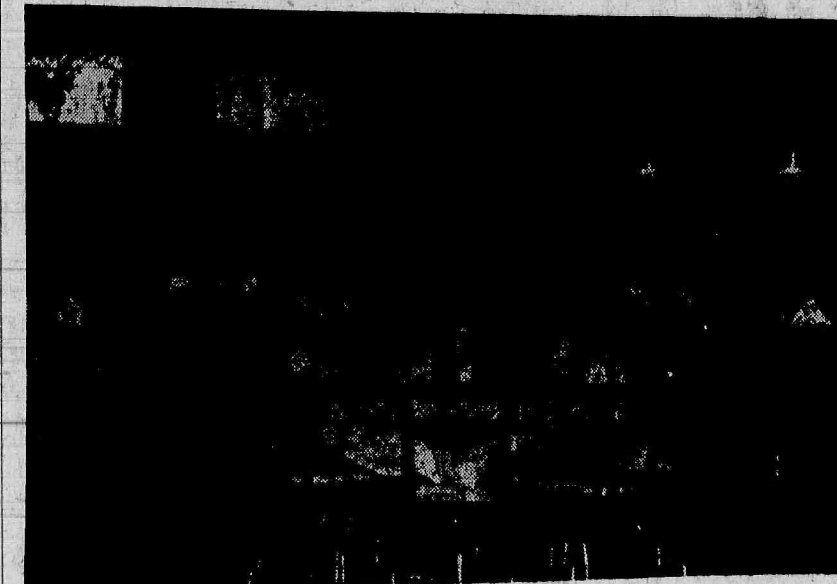
Under the personal direction of Joseph and Vincent Pamullo

Announcing  
**GRAND OPENING**  
of  
**KAREN'S**  
Key To Beauty

Specializing  
in  
Hair Coloring and  
Permanents  
"Only The Finest"

COME IN AND MEET:  
• MISS MARTHA • MISS KAREN  
• MISS ALMA • MISS CAROLYN  
FREE REFRESHMENTS SERVED EVERY WEEK-END

662 Passaic Avenue  
Nutley  
(Near Kingsland)  
Call 661-1988



JADE FOUNTAIN—No. Arlington (991-5377) 602 Ridge Rd. (Rte. 17). Very much a chopstick or two above the norm in Chinese dining is this new restaurant under the care of Messrs. Gee, Tom, and Chin. Food, decor, and extra serving touches make a meal here pleasurable to both eye and palate. The menu features Chinese-Polynesian food (and drink), such as Samoan steak (a filet in a delicate tomato sauce over onion), lobster Kauai (prepared with three spices, butterfly shrimp wrapped in bacon, pork with oyster sauce, as well as the more unusual dishes. A good way to taste the very special is to have the House Dinner, \$5.25 per person. There are also Family Dinners for two or more, \$3.25 each. All this in a subdued, Chinese-modern setting. Special lunch 11:30 to 3, \$1.40 to \$2.50. Dinner all day to 9, Sat. and Sun. 10, \$3.25 to \$5, a la carte \$2.25 to \$5.75. Small bar and cocktail lounge area. Parties.

**Kal's**

RESTAURANT and COCKTAIL LOUNGE  
Now Open for PRIVATE CATERING SERVICES ONLY  
• BANQUETS  
• WEDDINGS  
• SHOWERS  
COMPLETE SERVICES AVAILABLE FOR YOUR PARTY  
HARRISON ST. ... NUTLEY  
Off Evergreen Av 667-7733  
Ample Parking

**City Line Lunch**

750 Washington Avenue  
BELLEVILLE 759-9789  
(Opp. Christian's Lounge)  
NEW ownership  
Tony (Muggs) and Andy  
TEXAS the BEST  
Breakfast COFFEE  
5 to 11 a.m.  
Juice, Steak,  
2 Eggs, French  
Fries, Toast  
and Coffee.  
**99¢**  
The finest taste!  
Rich flavor,  
never bitter.

**Real Italian Specialties**  
Open Daily 5 am-4 pm,  
Sun. 8 am. to 12 noon



# School Board Prerequisites

Today's school board member has to be able to "take it when the going gets rough," says the State Federation of District Boards of Education of New Jersey. Today, when school boards often find it necessary to make unpopular decisions, voters must consider whether a candidate for the school board has the courage and fortitude to publicly support and help implement decisions which some segments of the public may not welcome, but which are in the interests of the children.

Because school board work is tough and demanding it calls for the services of the best citizens a community has to offer. The federation suggests, therefore, that voters play the old game, "Twenty Questions," before casting a ballot in a school board election, in order to make sure they are choosing the best.

Following is a checklist for voter consideration.

1. Does the candidate have a record of successful accomplishment and a respected name in the community?
2. Has he previously shown leadership ability?
3. Is the candidate familiar with the needs and problems of the school district?
4. Is he intelligent and knowledgeable? This does not necessarily mean a high degree of formal education; it does mean alertness, awareness of what is going on in the community and in the world, and ability to relate his knowledge to the education of the children in his district.
5. Is he a person of high moral character, one who has demonstrated regard for ethical and spiritual values?
6. Does the candidate want a seat on the school board because of a sincere desire to serve the schools and the youth of the community or is he seeking political gain, prestige or other personal benefit?
7. Does he have business or personal interests which might conflict with the interests of the school district?
8. Will he serve the school district as a whole, rather than any particular group, cause, faction or area?
9. Does the candidate have a layman's relationship to the schools?
10. Is he willing and able to devote the long hours that school board service demands?
11. Is he able to think objectively and independently about situations and problems?
12. Is he sensitive to the needs of the schools and school problems?
13. Is he able to reserve judgment until he has all the facts and has weighed them carefully?
14. Is the candidate fair, open-minded, reasonable and without racial, religious or ethnic bias?
15. Can he work harmoniously as a member of a team?
16. Will he be able to distinguish between the broad, policy-making responsibilities and functions of the board.

and the administrative responsibilities and duties of the school administration?

17. Can he "stick to his guns," adhere firmly to his principles, yet help maintain and uphold the decisions of the majority of the board?

18. If public support and understanding are lacking can he continue to work cheerfully?

19. Will he be a "good-will ambassador" for the schools and be able to interpret and explain school programs and problems to the public?

20. Can the candidate keep his own counsel (in other words, "keep his mouth shut") when necessary, and avoid making premature or hasty statements?

# Alien Address Report Program Under Way

Dominick R. Rinaldi, district director of the Immigration and Naturalization Service, advised today that the annual alien address report program is again under way.

Rinaldi stated: "It is easy for an alien to report his address. Cards with which to make this report are available at post offices and offices of the Immigration and Naturalization Service. Completed cards should be returned to the clerk. Parents or guardians may submit reports for alien children under fourteen years of age and a relative or friend may obtain a card for an alien who is ill."

Rinaldi added that trained personnel will be available at

all offices of the Immigration and Naturalization Service to answer any questions that reporting aliens might have regarding immigration and naturalization matters.

**ZENITH**  
Hearing Aids  
and  
Batteries

**MARSHALL'S**  
HOUSE OF HEARING  
460 Franklin St.  
Bloomfield  
PI 3-6590

# NUTLEY CAMERA PHOTO SALE

127-620 KODACOLOR FILM with processing **\$2.89**

126 KODACOLOR with processing **\$2.98**

8MM KODACHROME with processing **\$2.98**

35MM 20EX with processing **\$2.59**

SWINGER FILM TYPE 20 **\$1.35**

Kodak Fiesta Camera Outfit **\$6.49**

Agfa Rapid Kit **\$4.95**

EVEREADY PHOTO BATTERIES AAA **2 for 25c**

EVEREADY PHOTO BATTERIES AA **2 for 25c**

9V RADIO BATTERIES **16c**

RECORDING TAPE 3 in. Reel—275 Ft. **25c**

RECORDING TAPE 7 in. Reel—3600 Ft. **\$2.75**

AMPEX TAPE 7 in. Reel—1200 Ft. **\$1.49**

CASSETTE TAPE (for Wallensack, Mercury, Norelco, G.E., etc.) **\$1.29**

COUPON DAYS

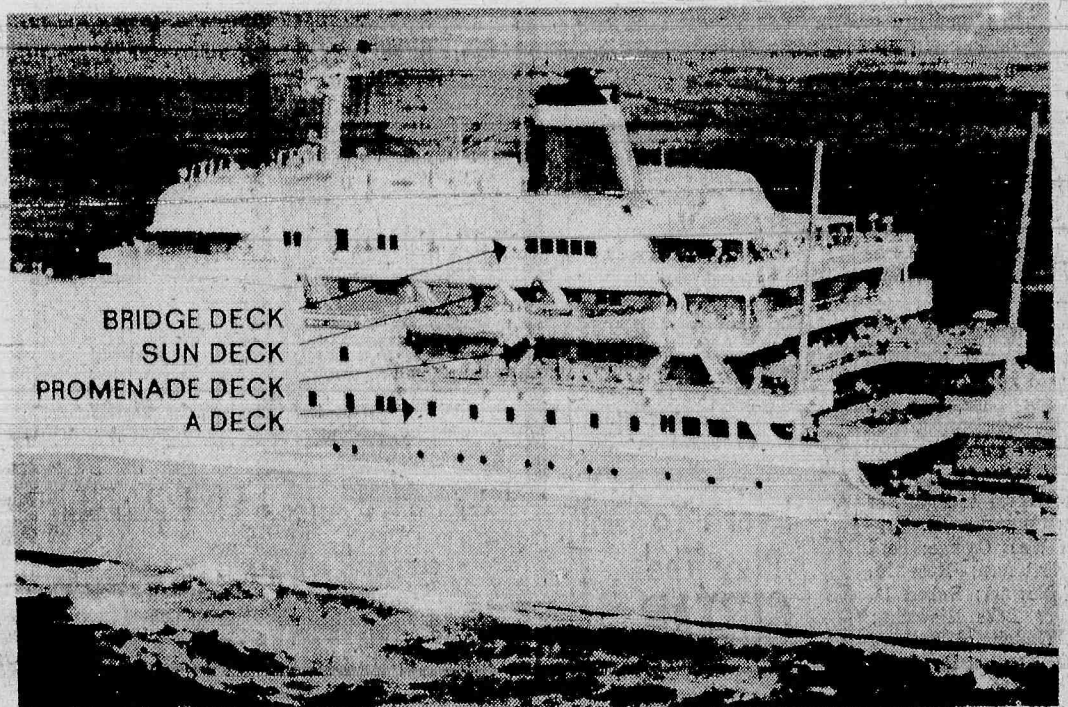
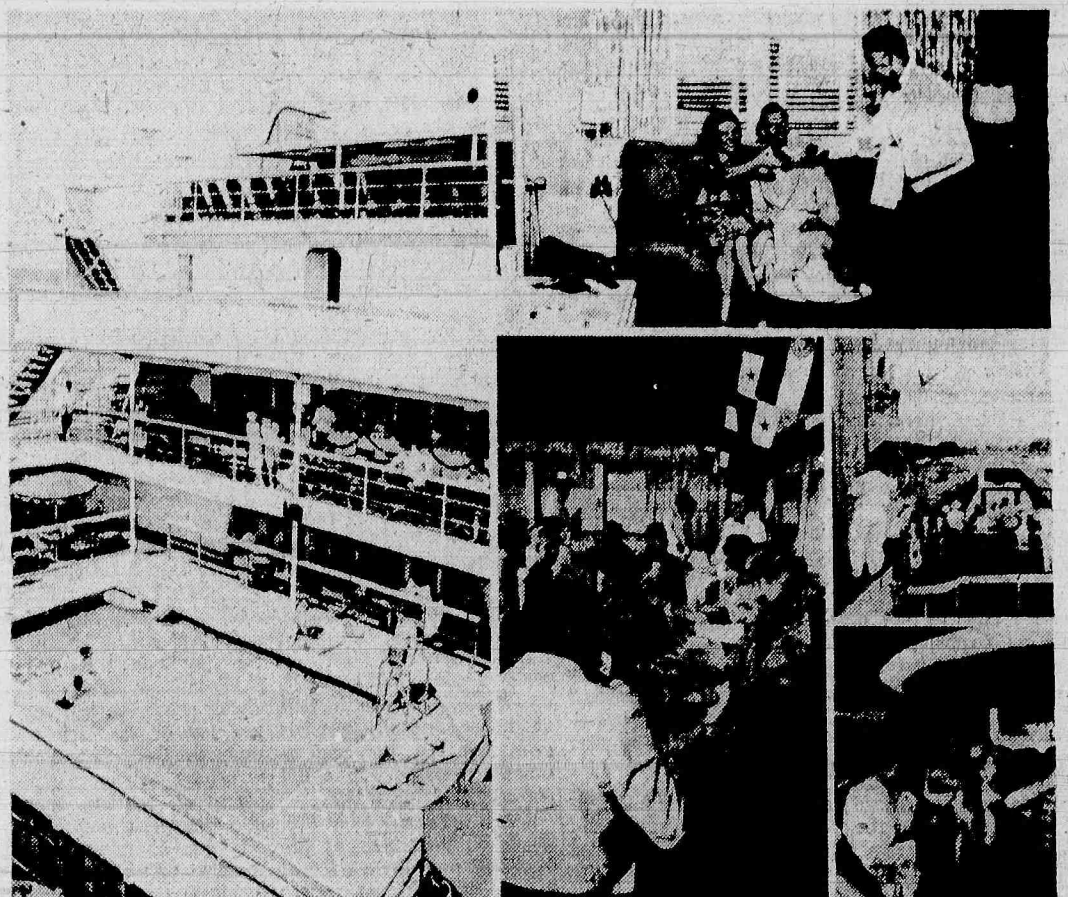
SYLVANIA BLUE DOT FLASH CUBES **99c**

WITH THIS COUPON ONLY OFFER GOOD THURS., FRI., & SAT. JAN. 11, 12, 13

CLIP THIS COUPON AND SAVE

# NUTLEY CAMERA and CARDS

215 Franklin Ave., Nutley NO 7-4166  
KODACHROME Film Service 24 hr. service processed by Kodak



BRIDGE DECK  
SUN DECK  
PROMENADE DECK  
A DECK

You'll sail to some of the most fascinating faraway places in the world . . . You'll roam through historic ports and magnificent capitals, see sights rarely glimpsed by most North Americans, no matter how well traveled on The Santa Mercedes!

from **\$795.00**  
per double occupancy

FOR FURTHER INFORMATION  
**CALL: 661-1234**

**NUTLEY TRAVEL SERVICE**  
**386 Franklin Avenue**  
**Nutley**

# Clancy Says

(Continued From Page 13) program. He went out of the office without the answers. I did not need him. I wanted workers.

"I have placed my side before the public. I would like to conclude that, contrary to what has been previously reported I have never had any dealings with Mike Rosmilia and respect him highly. I also have never said that 'what I have to do is make complete fools of themselves etc.'"

"If the project has been blown out of proportion by a few people, I am sorry. I am told that I am easy to get along with and I have done a few things for people in town. My only interest in the matter is to help people, especially mothers. If someone's fur has been ruffled, all I can say is, a Happy New Year to them and if a small glass of the cherished grape will heal their wounds, I shall buy. In so doing, if it helps the mothers, we have all gained something."

January 15 Due Date For 1967 Estimated Tax  
Monday, January 15, 1968, is the due date for the final payment of 1967 estimated Federal income tax, according to Joseph M. Shotz, district director of Internal Revenue for New Jersey.  
An amended declaration of 1967 estimated income tax may be required from taxpayers who have had changes in income or exemptions during the last quarter of 1967.



Business Briefs

By Jack Gurewitz  
Joe Silco

Gerald Thompson, of 181 River Road, Nutley, has been promoted to assistant treasurer by New Jersey Bank and Trust Company.

Thompson joined the Bank in the tabulation department, and is now manager of computer programming at the Passaic Office.

A graduate of Queen of Peace High School, North Arlington, he was with the Prudential Insurance Company before becoming associated with New Jersey Bank.

Bank Operating Income

National Newark & Essex Bank reported net operating income after taxes for 1967 of \$5,986,378, as compared with \$5,318,758 for 1966, an increase of 12.2 per cent. Deposits amounted to \$550,968,959, as compared with \$491,355,307 at the end of 1966. Total assets of \$619,715,410 compared with \$556,716,061 a year ago. These are all new records for the bank.

In announcing the year end figures, Robert G. Cowan, chairman of the board of directors, stated that the net operating earnings per share amounted to \$4.22, based on the average number of shares outstanding during the year. This compares with \$3.89 per share, adjusted for the 5 per cent stock dividend declared in July of 1967, an increase of 8.5 per cent per share on the average number of shares outstanding. Total capital funds increased to \$45,422,972, as compared with \$41,538,480 a year ago.

12 New Cashiers

Robert G. Cowan, chairman of the board of National Newark & Essex Bank, has announced the appointment of 12 new assistant cashiers.

They are Edwin B. Benson, of Dover; David A. Bryce, of Harrison; Constance R. Brydon, of West Orange; Paul Choi, of Paterson; Rose M. Duca, of Newark; Robert D. Egan, of Lake Hiawatha; Ruth H. Gauch, of Kearny; Samuel M. Kent, of Roseland; Grayce A. King, of East Orange; Philip W. Koebig, III, of Morristown; Mable R. MacLean, of Caldwell, and George J. Van Dalen, Jr., of Toms River.

Nutley Savings Assets

Nutley Savings and Loan Association reports a record in assets for the year ending December 31, 1967, according to an announcement by John P. Dolan, president. Assets reached a new total of \$49,930,365.31, an increase of more than \$2,258,765 over the previous year.

Total savings rose by more than \$1,760,274.28 to a new high of \$41,068,865.05, one of the largest single year increases ever achieved by Nutley Savings.

The report also indicates an increase of mortgage loans of more than \$1,979,705 to a new high of \$45,011,205. Dolan also stated a new record for net income was achieved with a total of \$2,850,261.

Nutley Savings last year paid out \$1,777,807.45 in dividends on savings accounts, \$109,468 more than the previous year.

Dolan also stated that \$398,916.57 was transferred from net income to reserves bringing the reserves to \$4,579,106.61.

He reported the officers and directors were pleased with the continued pattern of growth of the institution which Dolan attributed to Nutley's economic progress and financial strength.

Nutley Savings pays 5 per cent dividend on one year savings certificates, 4½ per cent quarterly dividends on regular savings and all accounts are insured up to \$15,000 by the Federal Savings and Loan Insurance Corporation.

Shop-Rite Job Opportunities

Supermarkets General Corp., operators of 76 Shop-Rite Supermarkets has developed a job opportunity exhibit at the Plainfield, New Jersey, High School in connection with that school's distributive education program.

The exhibit, assembled by students in the distributive education classes, consists of posters, copies of the supermarket general company newspaper, a variety of photographs and actual products carried in Shop-Rite Supermarkets.

Serving to dramatize work in supermarkets and the varied company activities, one intent of the exhibit is to provide students with visual, down-to-earth information

about the opportunities SGC offers for building a career in its Shop-Rite stores and other units.

Students were given a brochure describing the company's advancement opportunities, types of jobs available, working conditions, benefits, training programs.

The Shop-Rite exhibit was initiated by Alan Sorkin, manager of supermarkets general's Plainfield Shop-Rite and John Coogan, coordinator of the distributive education program at Plainfield High School.

The program gives students the opportunity to work and train part-time in local business at the regular wage rates and at the same time, earn academic credits toward graduation.

Discussing the program, Sorkin said, "The distributive education program offers practical training and experience for high school students. We feel it's a valuable bridge between the school and business worlds, and we're very happy with the program's results." He said the exhibit has already been requested by other area high schools.

Nutley Grad MSA Salesman

J. R. Hicks has been named a salesman in the Queens and Long Island, N.Y., areas for Mine Safety Appliances Company, Pittsburgh, Pa.

MSA is one of the world's largest manufacturers of safety equipment. Its New York district office is located in Mountainside, N.J. Other New York offices are in Albany, Syracuse, and Towanda.

Hicks has been a sales trainee in the northern New Jersey area since April, 1966. He is a 1961 graduate of Nutley High School.

New High Resources

First National State Bank of New Jersey reported new highs in resources, loans, deposits, capital funds, earnings, and dividends for 1967. Total bank resources as of December 31, 1967, were \$822,768,020, against \$759,120,850 in 1966.

Learn To  
Play The  
GUITAR  
with  
FRANK ROSA  
CALL PL 1-0338

Total deposits were \$710,999,609 compared with \$650,134,655, and loans \$421,268,296, against \$395,849,334. Total capital funds were \$70,778,890 a gain of \$68,715,247.

Net operating earnings for the year 1967, based upon 1,778,000 shares outstanding, were \$6.191,426, or \$3.48 per share, compared with \$5.731,978 or \$3.22 per share for 1966.

For comparative purposes, the figures have been restated to show the effect of the Bank of Nutley acquisition.

The regular quarterly dividend of \$.45 per share paid on January 2, 1968, was a 12½ per cent increase over the preceding quarterly dividend and indicates a dividend of \$1.80 per share for 1968.

The Howard Savings Institution

The Howard Savings Institution showed a 1967 deposit gain higher than in any single year in the Bank's 110-year history, according to John W. Kress, Howard president.

On December 31, 1967, deposits totaled \$762,159,706.12, up \$78,658,357.49 from the total at the end of the previous year. The 11.51 per cent increase compares with a 8.01 per cent gain during 1966.

Assets were reported at \$831,650,470.67, an increase of \$81,620,772.02 over the asset total a year ago. This represented a 10.88 per cent gain compared

to 7.85 per cent for the previous year.

During 1967 The Howard accrued and paid dividends of \$33,298,807.38. Kress noted that this was \$4,814,759.52 or 16.9 per cent greater than in 1966 and represented a record of unbroken dividends since the Institution was founded in 1857.

"The higher deposit figure indicates increased emphasis on savings among New Jersey residents," Kress said, "resulting in The Howard's greater participation in the State's economic growth. Then too, more people are seeking out The Howard to handle their savings funds. The number of depositors has now reached a record total of 366,105."

At year-end the bank held 41,026 mortgages, totaling \$582,019,282.45. The mortgage portfolio consisted of 18,674 consisted of 18,674 conventional, 13,667 Veteran and 8,685 Federal Housing loans. Kress noted that the half-billion dollar portfolio is invested entirely in New Jersey, and includes properties in over 90 per cent of the State's 568 municipalities. "The Howard is helping to finance schools, places of worship, hospitals and commercial enterprises of all types and sizes. Approximately 97 per cent of our mortgage loans are on one-to-four family dwellings," he said

RESTORE YOUR RUGS  
TO THEIR  
ORIGINAL BEAUTY!



ARMSTRONG • AMTICO • CONGOLEUM-NAIRN  
KENTILE  
CARPETING BY:  
GULLISTAN • MAGEE • MOHAWK  
FREE ESTIMATES

QUALITY  
RUG  
CLEANING MEADS-MILLER

143 FRANKLIN AVE., NUTLEY  
667-4305

Mon. - Thurs. to 6 PM Fri. to 9 PM Sat. to 4:30 PM

EXPERT

RUG  
CLEANING

Area Rugs and  
Wall-to-Wall Carpeting

FREE

Pick-Up  
&  
Delivery

AUTO SEAT COVERS

JERRY'S  
AUTO SEAT CO.

197 Franklin Avenue  
Nutley

- Custom Made Seat Covers
- Convertible Tops
- Kitchen Chairs
- Motorcycle Seats
- Boat Seats
- Truck Seats Repaired

CALL 661-2237

MULLIGAN MOTORS

NUTLEY NO 7-2121

All Auto Repairing From  
Transmission Rebuilding to  
Lubrication

Open 6 Full Days Weekly

FOR A COMPLETE LINE  
of  
AUTO PARTS  
AND ACCESSORIES  
it's

STRAUSS STORES

46-48 Franklin Ave. NO 7-3962

FREE PARKING

STRAUSS' EXCLUSIVE  
DRIVE IN  
INSTALLATION CENTER

CAB SERVICE

Your Ad Will Appear  
On This Page  
FOR JUST

\$3.00

PLACE YOUR  
ORDER TODAY

Call 667-2100  
or 759-3200

MUSIC

INSTRUCTION

MUSIC IS MY SPECIALTY

FRANK ROSA

Teaching

- Accordion
- Guitar
- Piano

call PL 1-0338

13 Lawrence St. Belleville

Your Ad Will

Appear On

This Page

FOR JUST

\$3.00

PER WEEK

PLACE YOUR

ORDER TODAY

Call 667-2100

Or 759-3200

FINE FOODS

Tel. 667-9635

Open Wed. & Thurs. 4 P.M.  
to 12 P.M.  
Fri. and Sat.—  
4 p.m. to 1:30 a.m.  
CLOSED MON. & TUES.

RALPH'S

pizzeria

ITALIAN MEAT BALL &  
SAUSAGE SANDWICHES

564 Franklin Avenue  
Nutley, N.J.

FINE FOODS

SKANDIA

DELICATESSEN

NORMAN & MARY DELIMAN  
We're proud of our  
HOMEMADE DELICACIES  
TASTY FOODS SUCH AS: Limpe  
(Swedish Rye Bread), Swedish  
Meat Balls, Pickled Herring, Swedish  
and Danish Cheeses, Home Made  
Salads, Danish and Swedish Pastries

WE CATER  
86 UNION AVENUE  
NUTLEY, N.J.  
667-6090



DINNER TIME  
DELIGHTS

HURRY WHILE THEY LAST!  
Garden State Farms

Colorful, Interesting, Valuable

MENU  
CALENDAR

FREE COUPONS INSIDE WORTH \$2.21

ONLY 69¢ reg. \$1.00

• FEATURE RECIPE  
EACH MONTH

• SUGGESTED MENUS  
FOR EACH DAY

SPECIALS ON SALE JANUARY 11 THRU 14!

OSCAR MAYER ALL MEAT

WEINERS or  
BEEF FRANKS

reg. 79c

69¢

HOT DOG  
SAUCE

reg. 39c

29¢

VAN HOUTEN  
BREAD

KING SIZE

4 for 95¢ or

25¢ each

BLOOMFIELD  
300 BROAD STREET

NUTLEY  
268 FRANKLIN AVENUE

PASSAIC  
125 MAIN STREET

MILK • BUTTER • EGGS • ICE CREAM • COTTAGE CHEESE • BAKED GOODS

OPEN 10 A.M. TO 10 P.M. SEVEN DAYS A WEEK

Garden State Farms

DAIRY STORES

G.S.F. 168-129

Business Service Directory



VIOLA BROTHERS, INC., 180 Washington Avenue, Nutley, has been a giant in the Lumber and Mason business for well over 50 years, selling the finest quality material that money can buy. Maintaining a prompt delivery service, Viola has also performed a personalized customer service second to none. "Keeping up to the times" has always been a tradition with the Company. A new warehouse was constructed recently housing a complete line of mason materials, lumber and building tools. Pictured above in Viola's busy main office are managers Joseph Viola and Tom Viola.

AUTOMOTIVE

Pat & Chuck's  
ATLANTIC  
SERVICE  
STATION

455 FRANKLIN AVE.  
NUTLEY

General Auto Care  
and Tune-up  
WE GIVE  
\$64 GREEN STAMPS  
Call 667-9643

HOBBIES &  
SPORTS

We Service  
What We Sell

DREWES

HOBBIES - SPORTS

- Balsa Wood
- Plastic G
- Balsa Kits
- Chemistry
- Project
- Material
- Stone Art
- Point By No.
- Racing Cars
- Trains
- Archery
- Baseball
- Equipment
- Basketball
- Gym Equipment
- Skates
- Tennis
- Fishing Supp.
- Weight Sets

Authorized Service Station  
for CARS, TRAINS, etc.  
285 Franklin Ave. Nutley  
NO 7-0247

(Across from Nutley Sr. High)

HOME APPLIANCES

SAL LaBRUZZA'S

National  
Appliance  
Service

Admiral • Blackstone • RCA  
Whirlpool • Fedders • Motorola  
WASHERS, DRYERS, DISHWASHERS  
AIR CONDITIONERS, REFRIGERATORS,  
TELEVISIONS, RANGES  
HI-FIS

35 Franklin Avenue, Nutley  
667-0103

SALES • SERVICE • REPAIRS

HOME IMPROVEMENTS

Viola Bros. Inc.

180 Washington Ave.  
Nutley

Complete Line of

Building  
Materials  
NO 7-7000

Your Ad Will

Appear On

This Page

FOR JUST

\$3.00

PER WEEK

PLACE YOUR

ORDER TODAY

Call 667-2100

Or 759-3200

PLUMBING & HEATING

Gas Heat, Baseboard,  
Hot Water and Oil Burners

Modernizing  
BATHROOM & KITCHENS

WINDHEIM

PLUMBING HTG.

418-20 Franklin Ave.  
Nutley

667-6886

SHOWER DOORS

SPECIALS ON

Tub Enclosures

and

Shower Doors

Frosted or Safety Glass  
Expert Installation

FORTE TILE CO.  
667-0253

SEWING SUPPLIES

661-0766 Eves. 759-7541

NUTLEY SEWING MACHINE

& FABRIC CENTER

Authorized Necchi Dealer  
Expert Repairs Made  
on All Makes of  
Sewing Machines  
Fine Fabrics  
Notions & Patterns

Store: Home: 187 Franklin Ave. 23 Forest St.  
Nutley, N.J. Belleville, N.J.

Proprietors  
Mr. & Mrs. Michael V. Benacchi

LANDSCAPING

Excavating - Landscaping  
Paving - Construction  
Machines and  
Truck Rental

Water problems solved  
For service and experience call

A. VOCATURO

PL 9-6640

Top Soil and Fill Dirt

MUSIC

INSTRUCTION

ACCORDION INSTRUCTIONS

NEW-EASY

KUEHL

667-2455

FREE BASS SYSTEM

Special Trial Plan

FENDER-GIBSON

GUITARS AND AMPS

NUNZIO

Music Center

401 Franklin Ave., Nutley

GIFTS & TOYS

JANUARY  
SALE  
Now in Progress

CANNON  
Turkish Towels  
All Colors  
reg. 1.19

NOW 84¢

Match box Series  
reg. 55c

NOW 39¢ EA.

D & S GRAND  
227 FRANKLIN AVE.  
NUTLEY

MASONRY

MICHAEL

& CO.

182 Floyd St.  
Belleville, N.J.

We Specialize In:

• Steps • Porches

• Patios • Plastering

& All Alterations

FREE ESTIMATES

Cheerfully Given

CALL: 759-4416

Day or Evening

SIDING

STEEL and

ALUMINUM

SIDING

HOME WALL

Complete Modernization

667-8126

667-9073

INSURANCE

CARL A.

ORECHIO

Insurance



**ORDER NOW! DIAL 667-2100, 759-3200 or 483-8570****YOU'LL BE SURPRISED HOW  
LITTLE A WANT AD COSTS****IN MEMORIUM**

In memory of Sue Carroll Austin, who passed away Jan. 5, 1965. Every day in some small way. Memories of you come our way. Deep in our hearts you are with us yet. We love you too much too ever forget.

Sadly missed by  
Your Husband, Children and Sisters.

**ALUMINUM  
GLASS REPAIRS**

ALL TYPE GLASS REPLACED. Storm Panels & Screens. Up to 40% Discount on Storm Windows-Doors, Tub Enclosures, etc. U.S. All Weather Products Co., 217 Belleville Ave. PL 9-1863. TF

**ALUMINUM  
SIDING**

ALUMINUM SIDING AND GUTTERS also aluminum siding repaired. Roofing and roof repair. Deal direct with contractor, Henry Galicco. Call 667-3832. TF

**AUTOS FOR SALE**

1963 FORD CONVERTIBLE, Galaxie 500. Asking \$750. 661-0852 after 6 p.m.

1959 Rambler American station wagon, 6 cylinder, stick shift. Dependable transportation. \$175. or best offer. Call 667-1341.

**AUTO-GLASS  
REPLACEMENT**

ALL TYPE GLASS REPLACED. Storm Panels & Screens, Wood, Jar, Table Tops, Mirrors (resilvered), Store Fronts, Fixing, etc. U.S. Glass Co., 215 Belleville Avenue, PL 9-1867. TF

**AWNINGS & SHADES**

DAVIS-TAYLOR SHADE SHOP. Albert W. Taylor, Prop. Wholesale and Retail. Window Shades Manufacturers. Venetian Blinds. 350 Passaic Ave., North 7-0491. TF

**AUTO SERVICE**

COLLISION SPECIALISTS. STRAIGHTENING, PAINTING, lacquer, enamel, lucite. Electric welding chassis work, frame glass work. AL'S RIVERSIDE BODY & FENDER WORKS, 221 Valley Street, Belleville, PL 9-1162. 12-17-59 TF

**BASEMENT & ATTICS**

A-1 HOME IMPROVEMENTS — Specialists in basements, attics, and repairs. We specialize in 100 extensions, kitchens, bathrooms & siding. Licensed contractor. Fully insured. No down payment necessary. Time payments arranged. NU-Model Construction Co., 991-3535 or 485-2265. TF

**CHILD CARE**

CHILD CARE — woman wishes to care for one or two children in her home for working mother. Clean home & playmates. Call 483-3552.

WILL CARE FOR an infant in my home 5 days. Experienced, reliable. Have all necessary equipment. Call 661-1207.

WOMAN WILL CARE for children in my own home \$4 per day. By day or week. Call 661-1934. 1/25

MOTHER WISHES to take care of children for working mothers in my home. Weekdays. Call 759-5508.

FRANCISCAN SISTERS OF ST. ELIZABETH NURSERY, 174 Franklin Avenue, Nutley. Ages 2-5 years. Hours 7 A.M. - 5 P.M. Playroom, dining room, recreation room with TV and stereophonic records. Hot lunch at 12 noon. Nap 12:30-2 P.M. Snack at 3 P.M. Transportation for registration. 6:30 - 7 P.M. North 1-0919. 1-26-61 TF

**CARPENTERS AND BUILDERS**

A. COLLINS — Carpenters and Builders. Kitchen, Attic, Basement remodeling. Roofing and Siding. Also Aluminum combination storm doors and windows. All work covered by insurance. Established 1939. North 7-0730. 1-21-60 TF

LONGOBARDI CONSTRUCTION CO. — Building additions, repairs and all types of electrical work. Free estimates. From cellar to roof. No job too small. Call PL 1-4194 or 483-1280. TF

COMPLETE ALTERATIONS PAINTING AND MASONRY. Roofing, siding, gutters, leaders. Remodeling of attics, kitchens, bathrooms and basements. Painting and tile ceilings. Aluminum combination windows and doors, also windows re-hanging.

GEO. GLYCENFER & SON — Call after 5 — PL 9-9362 TF

**CARPENTERS  
AND BUILDERS**

ALTERATIONS AND REPAIRS, remodeling, roofing, siding, dormers, porches, finished recreation basements. Free estimates. DiPietro Builders, North 7-2751. 7-17-58 TF

**CONVALESCENT AIDS**

LITTLE'S PHCY. now has available for sale or rent — Hospital beds, wheel chairs, walkers, crutches and a complete line of sick room needs. 667-0822. TF

**DECORATORS**

— See Painters —

**ELECTRICIANS**

LIVE BETTER ELECTRICALLY WITH FULL HOUSEPOWER

For free estimate phone Larson's Electric Service, 658 Belleville Ave. 24 hour Answering Service. 759-9262 — State Licensed. TF

CALL US FOR PROMPT and complete electrical service, D & D Electric, 58 Bellavista Ave., Belleville. Telephone Plymouth 1-2782. TF

TEL-STAR — Licensed electrical contractor. Industrial-residential-commercial. Air condition lines. RUSSO 991-7478. J. Sloan. TF

LIVE BETTER ELECTRICALLY WITH FULL HOUSEPOWER. For free estimate phone Larson's Electric Service, 658 Belleville Ave. 24 hour Answering Service. 759-9262 — State Licensed. TF

BELLO ELECTRIC SERVICE LICENSED ELECTRICIAN. Complete home wiring. Alterations and repairs. We specialize in 100 Amp. 220 line. North 7-0919. Call anytime for free estimate. 1-14-60 TF

ELECTRICAL CONTRACTORS Industrial and Residential. 100 AMP Service \$125.00 / Air Conditioning and Convenient Outlets Installed. Licensed and Bonded. Call — PL 9-4342 or 485-2589. TF

**FLOOR SERVICE**

KILLEN FLOOR SERVICE — sanding, finishing, waxing, leveling, insured — estimates. Statewide gymnasium, game line markings. R. L. Killen — PL 9-5954. TF

FLOORS SANDED, REFINISHED and waxed. American Floor Sanding Company. George Ingalls NO 7-5887. Gilbert Busch. NO 7-5887. 2-9-51 TF

**FOR RENT**

BELLEVILLE — Adults or business couples 2 oops, 5 and 3 rooms. Call 667-9259, after 12 noon call 661-1420. 1/25

NUTLEY — 3 room air conditioned garden apt., private entrance, parking. Near shopping & buses. \$125. per mo. 661-0617. 1/25

BELLEVILLE — 5 rooms, second floor, heat supplied \$140 monthly. 759-0758, anytime.

3 ROOMS — new tile bath, heat, hot water. Middle-aged couple preferred. \$300. Call 759-9266. 47 King St., Belleville. 1/25

TWO ROOMS and bath with garage. Call 667-2993.

BELLEVILLE — FOUR ROOMS plus garage. 2nd floor, heat and hot water supplied. \$120. Call 991-7157 after 6 P.M.

FOR RENT — The attention of over 45,000 readers weekly. \$2.50 for 20 words. There is no faster, less expensive or easier way to rent that apt. or house than a Nutley Sun, Belleville Times, Newark Record combination classified ad. Phone 667-2100. TF

DESIRABLE CORNER STORE on Franklin Ave., Nutley. Call 667-2939 for appointment. 1/11

**FOR SALE**

ANTIQUES SHOW AND SALE at the MEADOWBROOK DINNER THEATRE

Rt. 23, Cedar Grove, N.J. Tues. Wed. Thurs. Jan. 15, 17, 18 — hrs. 1-10 P.M. 40 select dealers from Moyn to N.J. with Art Glass, choice period furniture, dolls, silver, guns, pipe, rugs, pewter, jewelry, primitive nautical clocks and clocks. Admission \$1.25 or with this ad \$1. Come to New Jersey's most beautiful show.

FRIGIDAIRE — PERFECT CONDITION. Large size. Moving Call 661-2654. 1/18

MICKEY'S HERO SHOP for sale. Call 751-4555 between 8 A.M. & 2 P.M.

WESTINGHOUSE Refrigerator — Very good condition. Call 667-6811. 1/18

BABY GRAND by Chickering in good condition. Priced reasonably. Call 667-7644 after 6 p.m. 1/25

**HELP WANTED FEMALE****WOMEN  
Part-Time Office Work**

Local women needed to work with Nutley Sun-Belleville Times classified office staff either mornings or afternoons, five days a week.

Apply in person to the Nutley Sun, Town Hall Square, Nutley, N.J.

Jr. Steno — Sr. Steno

Good stenographic ability and good typing speed. Annual salary \$3800 to \$4500, depending on experience and ability.

Senior Clerk

Experienced in clerical work; must be able to type. Annual salary \$4675 to \$5500.

Teller Trainees

Math ability must be good. Annual starting salary \$4075. Apply 9 A.M. Through 4 P.M. Fidelity Union Trust Co. 765 Broad St. An Equal Opportunity Employer

Part-Time Experienced Savings or Commercial Teller

Hours 10:30 to 2:30. Salary, \$2.00 to \$2.50 per hour.

Junior or Senior Key Punch Operator.

Annual salary \$3800 to \$4600, depending on experience.

Clerks — 3 P.M. to approximately 11 P.M.

Experience in adding machine operation, and good in math. Annual salary \$3850.

COMPANION Housekeeper in Belleville. Call — 759-4154. 1/25

**FOR SALE**

TAKE SOIL AWAY the Blue Lustre way from carpets and upholstery. Rent electric shampooer \$1. at Sherwin Williams, 251 Franklin Ave., Nutley.

THE AMAZING BLUE LUSTRE will leave your upholstery beautifully soft and clean. Rent electric shampooer \$1. at Tiber Hardware, 125 Washington Ave., Belleville.

GARAGE SALE — Household items. Pictures, pots, pans etc. Sat. Jan. 13 — 10 A.M. 144 Academy St., Belleville.

CLEARANCE SALE — Manufacturers Outlet

KNITTED DRESSES and SWEATERS. All Wool & Silk Knits.

Dresses & Suits \$10.00. Sweaters, Shells & Skirts \$3.00. Sizes mostly 8-14.

Values up to \$80.00. LANA KNITWEAR INC. 211 A BELLEVILLE AVE.

9-5 Monday thru Friday 1/18

3 PIECE LIVING ROOM FURNITURE. Good condition. Swivel rocker. End table, cocktail, lamp table. Reasonable. Call 661-2560. 1/18

FOR SALE — Over 45,000 readers of this space each week. \$2.50 for 20 words. Where else can you sell that house, furniture, car, or grandmother's old car so quickly, easily and inexpensively. Phone 667-2100. TF

SALE at SISTERHOOD THRIFT SHOP. 409 Washington Ave., Belleville. Men's sport jackets, all sizes 50c each. Sale beginning Thurs. Jan. 11 for one week only. Hrs. Mon. thru Fri. 10 A.M. to 3 P.M. Monday night 7-9.

BLOOMFIELD OFFICE needs 4 women or young ladies to work part-time early evenings. High starting salary. Excellent working conditions. No experience necessary. Call Mr. Mann, 743-1305. 1/11

NOW IS THE TIME To earn the money to pay your bills! Learn how to be an Avon Representative today by calling 642-5146. Don't put it off.

ASSEMBLERS

Outstanding benefit program. Electrical bench assembly work — GENERAL ELECTRIC CO. 50 Windsor Pl. Nutley, N. J. 667-2790

An equal opportunity employer

HELP WANTED

MALE

ATTENTION

RETIRED MEN

Two active retired men who feel young at heart and who don't want to be placed on the shelf. Dignified and honest part time professional sales work for a 78-year-old company you will be proud to represent. You won't get rich, but you will be fairly remunerated. This is not a short term offering, but rather a consistent year-round position. Phone: Nutley Sun, Mr. Martyn, 667-2100. TF

GREEN GABLES

308 Passaic Avenue, Nutley (Near Chestnut Street) Under new management. Lodging accommodations for gentlemen. Ample parking space. Telephone 667-0571. TF

GILLIS PLAZA HOUSE

265 Willside Ave., Nutley. LARGE COMFORTABLE FURNISHED ROOMS, near Hoffmann-LaRoche and I.T.T., free parking — NO 9747. TF

KAL'S GUEST HOUSE, 116 Harrison Street off Franklin Avenue. NO 7-0357. Men only. 1-16-58 TF

THE WHITE HOUSE — GUEST ROOMS, 420 Centre Street, Nutley. Centrally located. Comfortable rooms. 377-4731 after 5 p.m. TF

FRIGIDAIRE — PERFECT CONDITION. Large size. Moving Call 661-2654. 1/18

MICKEY'S HERO SHOP for sale. Call 751-4555 between 8 A.M. & 2 P.M.

WESTINGHOUSE Refrigerator — Very good condition. Call 667-6811. 1/18

BABY GRAND by Chickering in good condition. Priced reasonably. Call 667-7644 after 6 p.m. 1/25

**HANDY CLASSIFIED  
MAIL ORDER FORM**

Please publish the following classified ad in your issues of:

WORDING AS FOLLOWS:

Name

Address

Phone

MAIL TO NEAREST OFFICE:

THE Nutley Sun

SUNBANK BUILDING  
TOWN HALL SQUARE  
NUTLEY, N.J.  
07110

THE Belleville Times

248 WASHINGTON AVE.  
BELLEVILLE, N.J.  
07109

**HELP WANTED MALE****Part Time  
In Belleville  
Four Men**

To Work Four  
Hours One Night  
A Week. Salary:

**\$25**

Phone: Roy Hunter  
746-4811

An Equal Opportunity Employer

**Garage Attendant**

To keep all bank-owned cars clean and assume duties of chauffeur on occasion. Annual salary \$4175.

**Night Guard**

To act as guard; also able to handle clerical work. Hours 10 P.M. to 6 A.M. Annual salary \$4400.

Accounting Clerk

Some experience in accounting. Salary \$4075 to \$4500.

Clerks

3 P.M. to finish. Experience in adding machine operation; good in Math. Annual salary \$3850.

Apply 9 A.M. Through 4 P.M. Fidelity Union Trust Company 765 Broad Street. Newark An Equal Opportunity Employer

**HELP WANTED  
MALE**

TELLER — NO EXPERIENCE NECESSARY. CONTACT MR. WILLIAMS AT DEWITT SAVINGS AND LOAN 436 WASHINGTON AVE. BELLEVILLE. PHONE 759-5264. 1/18

PARKING CASHIERS — \$1.80 PER HOUR

Part time for first class inside parking operation in downtown Newark. Mon. thru Fri. 7:30 to 12 noon. Must drive, be neat in appearance. All benefits paid. Send phone number and resume to the Belleville Times, Box 107, 246 Washington Ave., Belleville. 2/8

MAN FOR WORK with plastic printing concern. Apply in person Charles F. Heistreich Co. 54 Windsor Place, Nutley, N. J. 1/25

Earn up to \$3.00 per hour - work mornings or evenings. Call 661-2859, after 7 P.M.

DRIVER WANTED part time. Local delivery, any hours. Call 667-1126 after 4 P.M.

FULL TIME or PART TIME — receiving clerk and driver. Retired man considered. All benefits. Apply at Sally's Auto Parts, 75 Franklin Ave., Nutley.

**HELP WANTED**

MALE

Positions open in all fields. Cannot possibly publish full listing. Fee paid. Some, tuition paid.

Secy. Gal Friday, Steno, Clk., Typists, Bkpr., Accto. Clk., File Clerks, Asst. Cashier, etc. ALL SALARIES HIGH.

LANE EMPLOYMENT AGENCY 530 Franklin Ave., Nutley 667-5556 — 622-6005 TF

**HEARING AIDS**

SOUTH BERGEN HEARING AID CENTER

Little's Pharmacy 547 Franklin Avenue Batteries & Accessories. Repairs All Makes of Hearing Aids. North 7-0822. Geneva 8-1042. 9-28-61 TF

**INSTRUCTION**

Tutoring

All subjects and languages taught in your home. CAMBRIDGE 447-2999 TF

**JUNK DEALERS**

FOR SCRAP IRON & METAL — Brass, Copper, Radiators — Sinks — Bathtubs and Furnaces, clean cellars, attic. Call J. LUBY & CO. Phone 667-3768. TF

ATTENTION TOP PRICES—NEWS-PAPERS tied, lead; rags; copper; brass and junk cars. J. Resciniti, 42-44 Clinton St., Belleville, PL 9-4408. TF

FRANKIE'S SALVAGE — Pick up paper, rags, metal, mattresses, sinks, bathtubs and furnaces. Clean cellars. Telephone Plymouth 9-2613. 3-14-57 TF

BRING IT IN. Copper, brass, aluminum, lead, batteries, cast iron, steel, paper, rags. Top prices. Kearny Scrap Metal, 478 Schuyler Avenue, Kearny. Wyman 1-0432. TF

**LOST AND FOUND**

DOG FOUND — female. Black with brown paws. Owner or good home wanted. Call PL 9-0841.

LOST PASSBOOK #3346. Payment stopped. Finder please return to First National State Bank Kingsland Branch, Nutley. 1/11

**Motorcycle for Sale**

1966 HONDA 160cc motor bike. Very good condition. Only 1800 miles. Call 667-3210.

**ROOFING AND SIDING**

GEO. GLYCENFER & SON PL 9-9362

Free roof inspection, new roof, old repaired, hot or cold roofs, gutters, leaders, all types siding. Completely insured. All work guaranteed. TF

**REAL ESTATE FOR SALE**

BELLEVILLE — NEW LISTING

Attractive two family-brick and aluminum exterior. First floor 4 rooms, modern kitchen & bath plus large breezeway used as family room. Second floor, three rooms, modern kitchen and bath, attached garage. \$29,500.

ANNA M. HASCUP, Realtor 378 Franklin Ave. Nutley 667-0415 1/11

LISTINGS WANTED! BUYERS WAITING!

WHY NO ONE SELL SO MANY HOMES? Because I am the largest holder of Second Mortgages to finance purchases.

GIVE ME A RING JOHN J. McGRANE Licensed Real Estate Broker NO 7-3231 7-16-59 TF

6 ROOM CAPE COD Retired couple forced to sell this fine 11 year old cape cod in the Radcliffe school section of Nutley. The home is situated on a well landscaped 75' x 75' lot. The first floor consists of a living room (wall to wall carpeting included), 2 bedrooms of good size, a very large kitchen, tiled bath, and a closed in sun porch. The second floor has two large bedrooms, a full bath, and a large storage area. There is also a two car driveway, and an car garage under house. Asking \$27,500. Please call 667-3210

EXCEPTIONAL

Yantacow School district near ITT Labs 6 room colonial with 2 car garage.

STONE FRONT

CHARMING COLONIAL on tree shaded level lot in Spring Garden school district. 6 spacious rooms, 1-1/2 baths.

ALL BRICK

Vacant 6 room spacious home on 100 x 100 lot in fine Nutley Park Location. Desirable financing with low down payment to qualified buyer.

EVERYONE KNOWS GEORGE T. BOWES, Realtor 677 Franklin Ave. Nutley 667-3376

SERVICE

G. KNOUFF

Arc Welding — Iron & Sheet Metal Fabrication. Millwrights and Maintenance. 759-4329. 2/9

GENERAL HOME MAINTENANCE — Lawns and flower cut, interior painting, window chains, block ceilings, carpentry, floor tiling, light hauling, and more. Free estimates. 667-5090. Evenings & weekends. TF

ALL MAKES AUTOMATIC WASHERS, DRYERS, REFRIGERATORS, FREEZERS, air conditioners repaired. Factory supervised. Philco and Bendix service. 16 years experience. E. Crossley Service, 40 7-9278. 3-6-58 TF

L & M REPAIR SERVICE. Washers, dryers, dishwashers, waste-King Spec. Call 667-1565. TF

TELEVISION

ANCO SERVICE CO.

TELEVISION - STEREO - RADIO REPAIRS

ALL WORK GUARANTEED RECONDITIONED TV'S FOR SALE 667-1918



## Auditors Declare School Board Records in Order

A. M. Hart and Co., a firm of certified public accountants from East Orange reported this week the financial records of the Board of Education were in order.

The auditors made that announcement in their report summary on the audit of accounts for the school year 1967-68.

The financial records, books

of accounts and minutes maintained by the secretary were in satisfactory condition, "a spokesman for the firm said. The prescribed contractual order system was followed, utilizing bookkeeping machines. "Internal control procedures appear to be adequate. "Records of the Custodian of

School Moneys for disbursements and payroll are carbon copies produced by machine bookkeeping in the secretary's office and are acceptable. However, it was noted that the cash receipts record was not maintained on a current basis nor were entries made in sufficient detail. The auditors recommended, "that standard rules and

guidelines be established for the operation of the various school activity accounts and for uniformity in the maintenance of records; that the Custodian of School Moneys maintain a fully detailed and current record of cash receipts, and that the Custodian of School Moneys reconcile the payroll account and the bond and coupon account monthly

and file copies of such reconciliations with the secretary of the Board of Education."

In providing for the public presentation of the summary of the Audit for the 1966-67 school year, the Board of Education is complying with the New Jersey Statutes, which requires that within 30 days following the receipt of the report of the audit, board at a regularly

scheduled meeting to which the public is admitted, cause the recommendations of the auditor to be read and discussed and the discussion noted in the minutes of the Board.

At the meeting there was available for distribution to interested parties a synopsis or summary of all audits, together with the recommendations made by the auditor.

The Board of Education accepted the recommendations of the auditor, and directed its Secretary and Custodian of School Moneys to comply with the requirements contained therein.

The population of the nation shows a marked increase but what we need is higher average intelligence.

## Janette Nutley Center

"An active, progressive member of the fashion-conscious New Jersey Fashion Guild"

- Shop Daily 9:30 til 5:45
- Saturday 9:30 til 5:30
- Mon. & Fri. 9:30 til 9 PM

Park in the spacious municipal area, and enter store thru convenient rear entrance  
Charge Accounts Welcome

# Storewide Sale

Misses & Juniors  
Famous Make  
**CAR-COATS**

**20<sup>99</sup> 24<sup>99</sup> 30<sup>99</sup>**

• Leather Car-Coats, reg. \$65 39.99

"Main Floor"

famous label  
**SPORTSWEAR  
EXTRAVAGANZA**

misses! juniors! jr. Petites!

**20% off!**

- |              |             |              |
|--------------|-------------|--------------|
| • H.I.S.     | • ROSECREST | • JUNIORITE  |
| • RUSS TOGGS | • FOUR      | • OLD        |
| • MAJESTIC   | • CORNERS   | • COLONY     |
| • DIDI SCOTT | • JR. HOUSE | • COLE BROOK |
| • ACT III    | • TRISSI    | • EXMOOR     |
| • PERSONAL   | • HUNTER    | • WHITE STAG |

A magnificent fashion sale not equalled by other stores. These are all first quality, all fresh, "IN SEASON" sportswear and coordinates including SLACKS! TOPS! JACKETS! SWEATERS! by America's most respected makers!

entire stock!  
children's famous label  
**WINTER OUTERWEAR!**

**20%**

- coats!
- carcoats!
- snow suits!
- jackets!
- rainwear!

Boys 3 to 7, 8 to 16, Girls 3 to 6x,  
7 to 14 Infants and Toddlers 2 to 4.

Main Floor

Our traditional  
"honest" event!

**1/2 price!**

**DRESS  
SALE!**

• Regularly "in stock"  
\$23. to \$35.

**11.99 to 22.99**

Sizes For Misses, Juniors  
Jr. Petites & Half Sizes!

New Fashion Floor

famous names  
**FOUNDATION SALE!**

"MAIDENFORM"

Bra, reg. 2.50, white	1.99
Bra, reg. \$4., white, black	3.19
Bra, reg. \$5., white, black	3.99
Girdle, reg. \$6., white	4.99
Girdle, reg. \$9., white	7.39
Girdle, reg. \$11., white	8.99

"LILYETTE"

"Push up" Bra, reg. \$7., white, black ... 5.50

"WARNER"

Bra, reg. \$3., white	2.49
Bra, reg. \$4., white	2.99
Girdle, reg. \$11., white	8.99
"Concentrate", reg. \$12., white	9.99
"Concentrate", reg. \$13.50, white	10.99

"KAYSER"

(Wispons & Wispens)

Girdle, reg. \$9.	6.99
Girdle, reg. \$10.	7.99
Girdle, reg. \$6.	4.99
Girdle, reg. \$5.	3.99
Girdle, reg. \$4.	2.99
Garter-belt, reg. 3.50	2.99
Garter-belt, reg. \$7.	5.99

"YOUTHCRAFT"

Bra, reg. \$5., white, yellow, pink	2 for \$5.
Girdle, reg. \$9., white, yellow, pink	5.99
Thi-size, reg. \$11., white	8.99
Thi-size, reg. \$12.50, white	9.99
Thi-size, reg. \$9., white	6.99

"CARNIVAL"

Bra, reg. \$2., white	1.69
Secret Form, reg. 2.50, white	1.99
Girdle, reg. \$6., white	4.99

"FORTUNA"

Girdle, reg. \$6—\$7	4.99—5.99
Girdle, reg. \$12—\$14	9.99—11.99

"GODDESS"

Bra, long line, reg. \$7. 5.49

"SARONG"

Girdle, reg. \$16. 13.99

"SURPRISE"

Corde de Parie, reg. \$9. 7.45

MISSES "CARTER"  
COTTON PANTIES

• Reg. 90c **69¢** 6 for \$4

Reg. \$1.00 **80¢** 3 for 2.29

WOMEN'S  
PANTIES

**59¢**

6 for 3.50

Misses,  
Junior, Jr. Petite  
**COAT SALE!**

casual, untrim, dressy  
& fur-trim styles!

- reg. \$50. to \$55. .... 39.99
- reg. \$60. to 65. .... 29.99
- reg. 70. to \$85. .... 49.99
- reg. \$100. to \$110. .... 69.99
- reg. \$119. to \$129. .... 75.99
- reg. \$159 to \$190. .... 125.99

These are all famous label coats, and the prices "quoted" are "NOT" the "so-called" comparable prices you read about elsewhere. Janette Nutley Center offers only the BEST, and our prices, and our sales, are honest. We invite and welcome comparison.

New Fashion Floor

Misses & Jrs.  
**"BENCHWARMERS"**  
**19.95**

• regularly 23.95

A superb collection of beautifully tailored, well-designed casual benchwarmers, so necessary for the winter season. Sizes S, M, L in a nice array of popular colors. Most have hoods.

New Fashion Floor